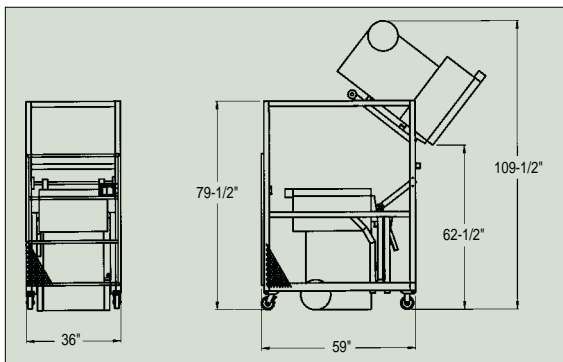


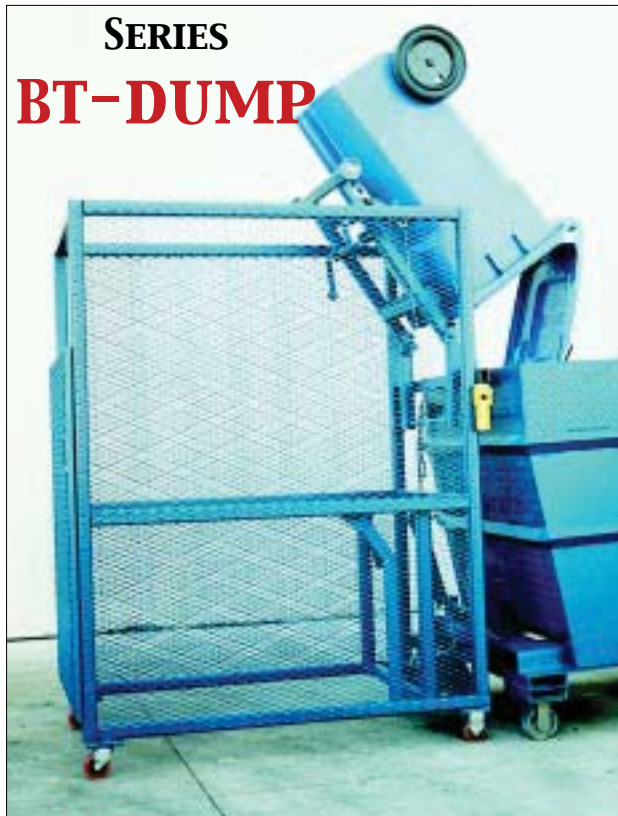
TRASH CAN DUMPERS

**SCHOOLS • FACTORIES • HOSPITALS
SHOPPING CENTERS • CHURCHES**

Minimize lifting with the rugged all steel **Trash Can Dumper**. One person can easily and safely empty trash cans into dumpsters. The automatic container clamp captures the trash can container. Hand crank (**BT-DUMP-HC**) or 115V, 1 Phase push button actuation (**BT-DUMP-E**) rotates containers to 135° angle (60" dump height) above dumpster. Each unit comes with four casters for easy maneuverability and heavy duty mesh sides for safety. Capacity 400 pounds. One Trash Can, model **B95-GLT**, comes standard with each unit.



* Trash/Refuse Containers on back. Consult factory with your container specifications.



FORK MOUNTED TRASH/REFUSE DUMPER

MODEL BFM-T-DUMP



Secure dumper to fork truck with safety chain and run cable to drivers seat. Align trash can with dumper and lock into place.



Once locked in place transport trash can to refuse container, align and pull chain to dump refuse container contents.

Save time and reduce work-related injuries caused by lifting and dumping heavy waste containers. This innovative product will allow a fork truck driver to lift and dump refuse containers, weighing up to 1,000 lbs., without ever leaving the seat of the fork truck! Only for use with 64 gallon trash can, model **BTH-64**, or approved equal. Fork pockets are 2-1/4" high by 7-1/4" wide usable. Steel construction for years of dependable use.



RELEASE CABLE to actuate dump cycle from seat of fork truck

SAFETY CHAIN to secure dumper to fork truck

BEAK GRIPS secure refuse container to unit

* Trash/Refuse Containers on back. Consult factory with your container specifications.

MULTI-PURPOSE TOTE DUMPER

- Capacity 600 lbs.
- Dump Heights 48", 60" or 72"
- Rotates Tote 135°
- 5" x 2" Polyurethane Casters
- Floor Brake
- Heavy Duty Steel Construction
- 1-1/2 HP, 115V Industrial Motor
- Dump Time is 25 seconds
- Rainproof 24V Hand Control on an 8 foot Cord
- Includes (1) BMPT-2 Container
- Custom Sizes Available

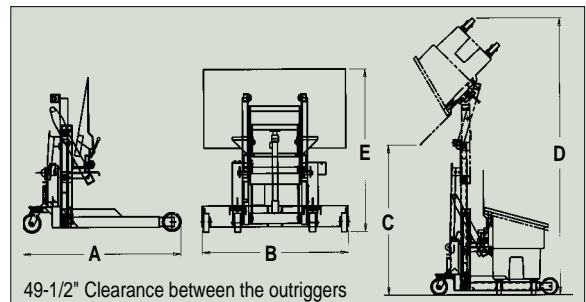


(1) Polyethylene Tote, model BMPT-2 comes standard with each unit

SPECIFICATIONS

Model Number	Dimensions (inches)				
	A	B	C	D	E
BJMD-1000-48	62	56-1/2	48	98	63
BJMD-1000-60	62	56-1/2	60	123	63
BJMD-1000-72	62	56-1/2	72	140	63

49-1/2" Clearance between the Outriggers.



REFUSE CONTAINERS



MODEL BTH-64

- Works with Fork Mounted Trash Can Dumper, model **BFM-T-DUMP**
- 64 Gallon Polyethylene Tote (32 Gallon Also Available, model **BTH-32**)
- Overall Size is 23"W x 29"D x 41"H



MODEL B95-GLT

- Works with Trash Can Dumper, model **BT-DUMP**
- 95 Gallon Poly Tote
- Colors Blue, Brown, Gray or Green
- Capacity 300 lbs.



MODEL BMPT-1

- For Tote Dumper, series **BJMD**
- Overall Size is 35"W x 53"L x 42"H
- 1/2 Cubic Yard, Polyethylene Tote
- (4) 6" x 2" Mold-On-Rubber Casters
- Capacity 200 lbs.

Beacon Industries, Inc.

12300 Old Tesson Rd.

St. Louis, MO 63128-2247 USA

Phone: (314) 487-7600 Fax: (314) 487-0100

www.beacontechnology.com

E-Mail: sales@beacontechnology.com

Bulletin BTCD-0301

Copyright 2001