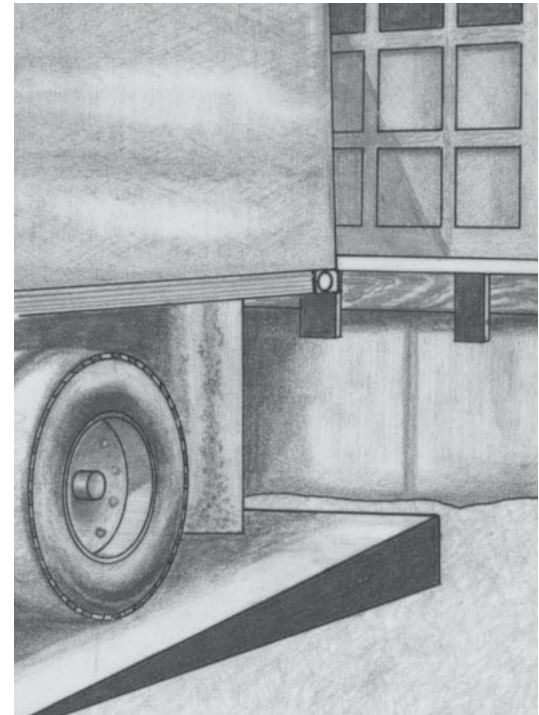
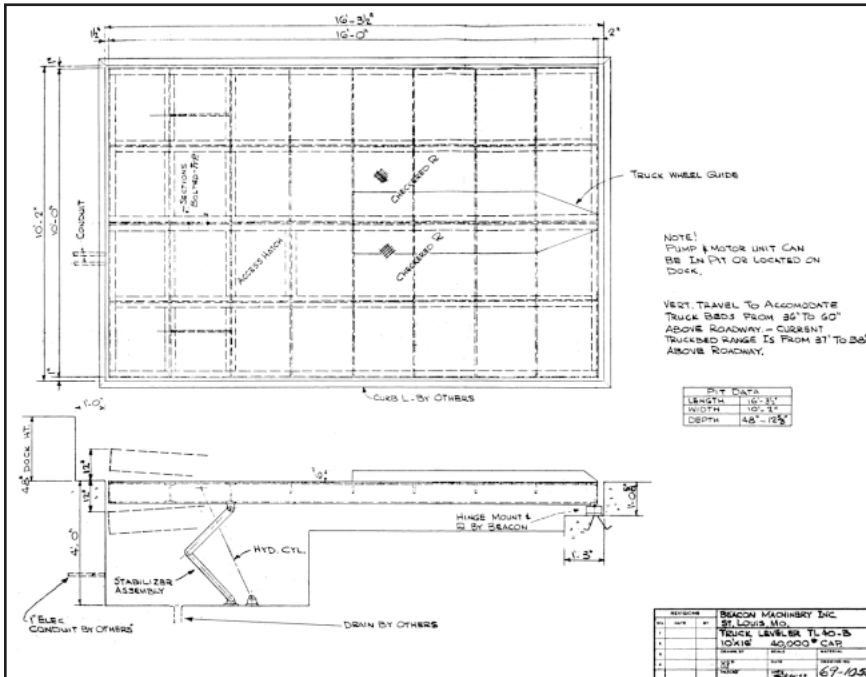


Purchase Order No:		Approved Date:	Ship Date:
Purchaser:		Dealer:	
Contractor:		Architect:	
Project:		Location:	
Model No:	Size:	Quantity:	Capacity:

# TL Series Truck Service Dock Truck Lifts



## ARCHITECTURAL SPECIFICATIONS

### GENERAL

TL Series Hydraulic Truck Lifts are available in three styles.

- TL-40 Series - Two Movement 40,000 lb. capacity Truck Lift.
- TL-50 Series - Two Movement 50,000 lb. capacity Truck Lift.
- TL-60 Series - Two Movement 60,000 lb. capacity Truck Lift.

### DESCRIPTION

Adjustable hydraulic Truck Lift with two movements: (1) Up, (2) Down. Truck Lift Deck to be 10' wide X \_\_\_\_\_ long with a lifting capacity of \_\_\_\_\_ lbs. Platform to be solid and constructed of treadplate plate reinforced by structural "I" beams. Truck Lift shall be complete with 5 HP, electro-hydraulic power unit and two hydraulic cylinders. Truck Lift to meet or exceed OSHA requirements and CS 202-56 specs. To be Beacon Model TL Series as sold by Beacon Machinery, Inc.

### SCOPE

This specification describes a power operated Truck Lift to be installed in front of the Loading Dock. The Truck Lift is designed to raise and lower truck and its bed to meet dock level in order for the truck bed to be serviced during loading and unloading operations.

### DIMENSIONS

All dimensions, capacities, electrical characteristics shall be per drawing provided for each installation. Pit dimensions are 2" longer in width than deck, 3 1/2" longer in length than deck with a step down pit depth range of 12 5/8" to 48".

## OPERATION

The TL Series Truck Lift shall be provided with electric push-button control including UP - DOWN - EMERGENCY STOP. Vertical travel shall accommodate truck beds from 30" to 66" above roadway. Truck Lift has 36" of vertical travel, 18" up and 18" down.

## CONSTRUCTION

The Truck Lift solid platform shall consist of longitudinal length platform including truck wheel guides and is designed to perform the required function (raise-lower). Design of the Truck Lift includes a complete stabilizer assembly. The installation of the automatic Truck Lift is simple. Drawings are provided in order that the necessary anchor bolts may be installed in the pit when the concrete work is complete. Anchor bolts are required for the rear hinge, stabilizer assembly and the hydraulic cylinder base. Installation consists of mounting the rear hinge brackets in the pit, as well as the hydraulic cylinders in the stabilizer assembly. The leveler is shipped in three sections, inasmuch as it must be bolted together in the field with 3/4" bolts, which are provided with the equipment. After the deck is bolted the unit is placed in a pit, rest the rear hinge pin in the hinge brackets. The truck leveler should then be brought to the level position and the stabilizer linkage connected and the hydraulic cylinder connected to the underside of the deck. Rear hinge keeper plates are also bolted at this time. The hydraulic power unit has three mounting procedures options (1) mounted underneath the substructure (2) lagged to the pit floor (3) inside the building and the hydraulic lines are connected to the cylinders. After the electrical installation is complete the unit is ready to operate.

## HYDRAULICS

Hydraulic pump, Check valve, Solenoid control valve, Flow control valve included are standard. The large oil reservoir includes a fluid level sight gage. The two hydraulic lift cylinders include solid hard chrome plated rods.

## ELECTRICAL

Power unit consists of a package type 5 HP motor pump power unit for 230/460 volt, 3 phase, 60 cycle electric current. A two-button push-button station in a NEMA 4X control box, market UP - DOWN - EMERGENCY STOP is provided, as well as 110 volt, heavy duty solenoids for the remote control operation.

## PAINT

Durable polyurethane enamel paint is used on all parts of the Truck Lift. The platform and all components are safety yellow.

## OWNERS MANUAL

Owners Manual comes with each unit, including Serial Numbers, General Information, Installation and Anchoring Instructions, Wiring Schematics, Hydraulics Schematics, Operating Instructions, Loading and Unloading Instructions, Maintenance Instructions, Trouble Shooting Chart, Part Numbers Listed.

## LEVELER WARRANTY

TL Series comes with a Limited Warranty - 5 Years on structure, 3 Years on hydraulic components and 1 Year on electrical components.

**Beacon Industries, Inc.**  
12300 Old Tesson Rd.  
St. Louis, MO 63128-2247 USA  
Phone: (314) 487-7600 Fax: (314) 487-0100  
[www.beacontechnology.com](http://www.beacontechnology.com)  
E-Mail: [sales@beacontechnology.com](mailto:sales@beacontechnology.com)

