

# STEEL PIPE GUARDS BPGWM SERIES

POWDER  
COATED  
**TOUGH™**



YELLOW ORANGE BLUE BLACK GRAY

Available in six standard colors, custom colors & galvanized finish

Improve plant safety and efficiency with Steel Pipe Guards. Reduce costs associated with employee injury, machinery down time, insurance claims, and building repairs due to accidental collisions.

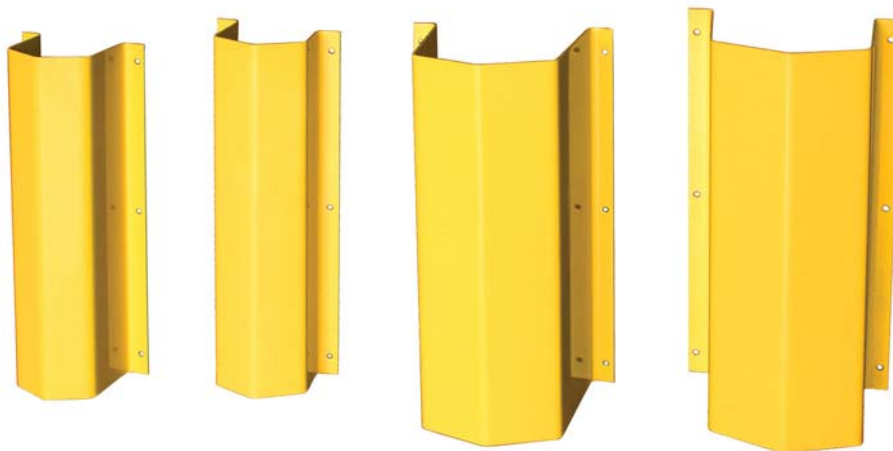
## PROTECTIVE PIPE GUARD COVER (BPGWM)

Helps protect your facility inside and out. Reduces damage to electrical, plumbing and mechanical equipment.

## CONSTRUCTED OF SOLID STEEL

Custom designs tailored to your application FAST.

- Standard flange used to mount to flat walls & 45 degree flange used to mount to exterior corner walls.
- Provides a valuable solution for protecting your personnel from injury and your facility from damage to crucial power & water supply, and mechanical lines
- Standard design covers 2, 3, 4, 6, 8, 10, & 12 inch pipe sizes
- **Contact BEACON for special size quotes**



**BEACON®**

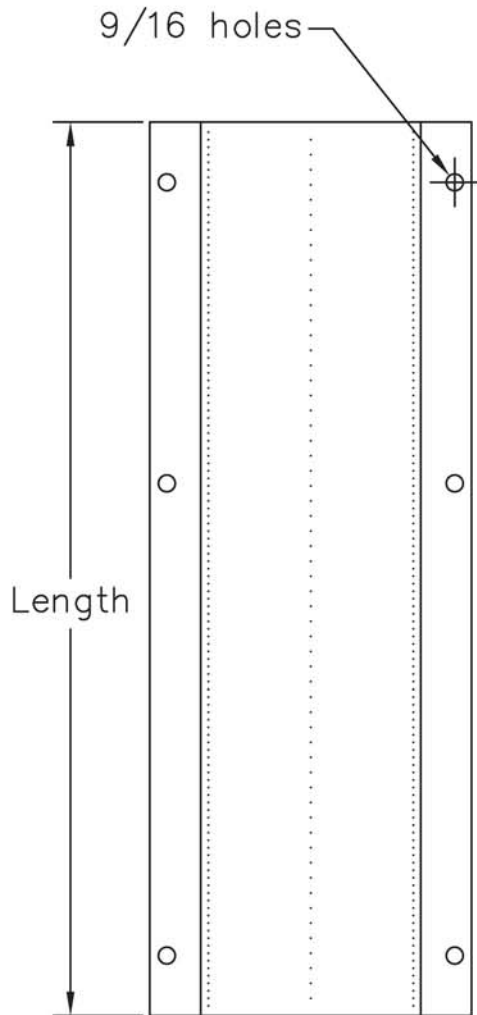
Beacon Industries, Inc.

12300 Old Tesson Rd. St. Louis, MO 63128

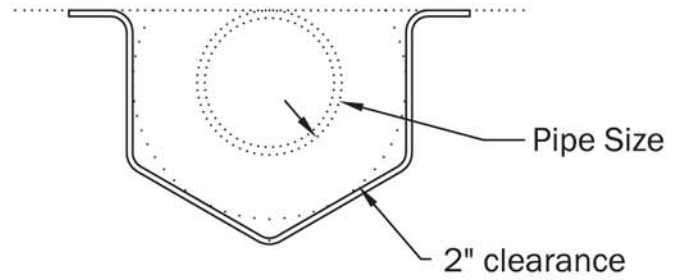
PH: 314-487-760 FAX: 314-487-0100

<https://www.beaontechnology.com>

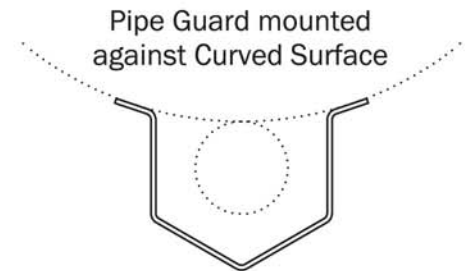
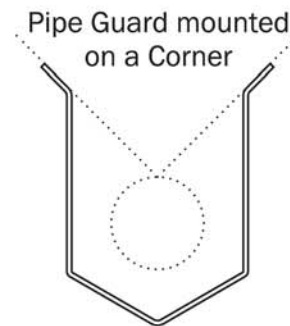
# STEEL PIPE GUARDS - BPGWM SERIES



Pipe and guard mounted against wall



Other configurations available:



Fabricated from 3/16" Steel Plate

**BEACON**® 

Beacon Industries, Inc.

12300 Old Tesson Rd. St. Louis, MO 63128

PH: 314-487-760 FAX: 314-487-0100

<https://www.beacontechnology.com>