

# SF Series

## Truck Service

### Six Movement Finger Deck Leveler



Reference: NAVAL EDUCATION AND TRAINING CENTER  
Rhode Island



CONTROL STATION BOX

## ARCHITECTURAL SPECIFICATIONS

### GENERAL

S Series Pit Mounted Hydraulic Dock Levelers are available with two different styles of deck platforms.

- SF Series - Six Movement Finger Deck
- SS Series - Six Movement Solid Deck

### DESCRIPTION

Adjustable hydraulic dock leveler with six movements: (1) Up, (2) Down, (3) Forward, (4) Reverse, (5) Left, (6) Right. Dock leveler to be \_\_\_ ft. long x \_\_\_ ft. wide with a rollover capacity of \_\_\_ lbs. Platform to extend horizontally 20 in., travel 24 in. vertically 12" up & 12" down and 12" side to side. Platform to be (solid) or (segmented) and able to compensate for canted trucks up to (4) or (6) in., and constructed of floor plate reinforced by type A-36 structural "I" beams, with 3/4 in. 55,000 yield strength fixed lip. Dock leveler to be equipped with full range toe guards, hydraulic velocity fuse, and cross traffic / maintenance safety support legs. Dock leveler shall be complete with 3 Hp, 2.5 GPM electric-hydraulic power unit. Horizontal side movement & slide deck hydraulic cylinders to be double acting and deck vertical travel hydraulic cylinders to be single acting. Dock Leveler to meet or exceed OSHA requirements, ANSI 30.1-2007 and SC 202-56 spec. To be Beacon Model \_\_\_\_\_ as sold by Beacon Industries, Inc.

### SCOPE

#### S SERIES IS SAFER

Unlike a standard hinged lip leveler, the slide deck has a continuous platform, making the unit inherently safer during dock operations. If a truck prematurely departs with dock personnel and equipment still on the leveler, the leveler supports the entire load to the end of its extended deck.



### BEACON IS BUILT TO LAST

Beacon is one of the few companies that rate their levelers with ACTUAL dynamic rollover capacities. We are proud of the way we rate our equipment. Our levelers are built to see loads, day-in and day-out, year after year. Throughout our range of 20-30,000 lbs. you will discover our levelers are the most durable.

The ramp shall perform the required functions:

• raise	• forward	• reverse
• lower	• left	• right

Size and movements are nominal dimensions.

The ramp shall be a packaged type, completely assembled unit with all components and load bearing structural members within its own steel frame, requiring only anchoring in position and electrical connections.

### OPERATION

The ramp shall have automatic free float, up or down, to compensate for movement of the truckbed caused by rising or lowering of truck body in loading or unloading operations. The telescopic 20" deck extension shall be under positive control at all times and not require manual positioning. The ramp shall be provided with electric pushbutton control for the six (6) movements:

**1-UP; 2-DOWN; 3-FORWARD; 4-REVERSE; 5-LEFT; 6-RIGHT**

**SF SERIES** ramp platform shall be provided with extending sections designed to increase its length in the same plane, from the fully retracted position.

**SS SERIES** platform shall be provided with an extending platform designed to increase its length in the same plane, from the fully retracted position.

The SF & SS Series dock leveler has a working range of 12" above to 12" below dock, total of 24" vertical travel.

The dock ramp shall be provided with an additional side movement of 12 inches or 6 inches left and 6 inches right of center position. The ramp platform, including the extension shall be "free floating", after the lip of the extension has been positioned on the truckbed, or tailgate, and shall automatically compensate for an out of level bed condition of up to 6 inches with the SF Series and 4 inches with the SS Series, in the six foot ramp platform width.

#### Vertical Travel



#### Horizontal Travel



#### Tilt Compensation



#### Side Travel



## DIMENSIONS - Finger Deck

MODEL	A DL WTH	B DL HGT	C DL LNG	D PIT WTH	E PIT HGT	F PIT LNG
SF68-20	6'	32"	8'	101.25"	32"	8'
SF68-30	6'	32"	8'	101.25"	32"	8'
SF610-20	6'	32"	10'	101.25"	32"	10'
SF610-30	6'	32"	10'	101.25"	32"	10'
SF612-20	6'	32"	12'	101.25"	32"	12'
SF612-30	6'	32"	12'	101.25"	32"	12'
SF668-20	6'6"	32"	8'	107.25"	32"	8'
SF668-30	6'6"	32"	8'	107.25"	32"	8'
SF6610-20	6'6"	32"	10'	107.25"	32"	10'
SF6610-30	6'6"	32"	10'	107.25"	32"	10'
SF6612-20	6'6"	32"	12'	107.25"	32"	12'
SF6612-30	6'6"	32"	12'	107.25"	32"	12'
SF78-20	7'	32"	8'	113.25"	32"	8'
SF78-30	7'	32"	8'	113.25"	32"	8'
SF710-20	7'	32"	10'	113.25"	32"	10'
SF710-30	7'	32"	10'	113.25"	32"	10'
SF712-20	7'	32"	12'	113.25"	32"	12'
SF712-30	7'	32"	12'	113.25"	32"	12'

CAPACITY: All models are available in 20 or 30,000 lb. rollover capacities.

## DIMENSIONS - Solid Deck

MODEL	A DL WT	B DL HGT	C DL LNG	D PIT WTH	E PIT HGT	F PIT LNG
SS68-20	6'	32"	8'	101.25"	32"	8'
SS68-30	6'	32"	8'	101.25"	32"	8'
SS610-20	6'	32"	10'	101.25"	32"	10'
SS610-30	6'	32"	10'	101.25"	32"	10'
SS612-20	6'	32"	12'	101.25"	32"	12'
SS612-30	6'	32"	12'	101.25"	32"	12'
SS668-20	6'6"	32"	8'	107.25"	32"	8'
SS668-30	6'6"	32"	8'	107.25"	32"	8'
SS6610-20	6'6"	32"	10'	107.25"	32"	10'
SS6610-30	6'6"	32"	10'	107.25"	32"	10'
SS6612-20	6'6"	32"	12'	107.25"	32"	12'
SS6612-30	6'6"	32"	12'	107.25"	32"	12'
SS78-20	7'	32"	8'	113.25"	32"	8'
SS78-30	7'	32"	8'	113.25"	32"	8'
SS710-20	7'	32"	10'	113.25"	32"	10'
SS710-30	7'	32"	10'	113.25"	32"	10'
SS712-20	7'	32"	12'	113.25"	32"	12'
SS712-30	7'	32"	12'	113.25"	32"	12'

CAPACITY: All models are available in 20 or 30,000 lb. rollover capacities.

\*DL = Dock Leveler Dimensions  
\*PIT = PIT Size Dimensions  
Custom Dock Leveler Sizes Available  
Pit Shall Have 1/2" Slope To Front

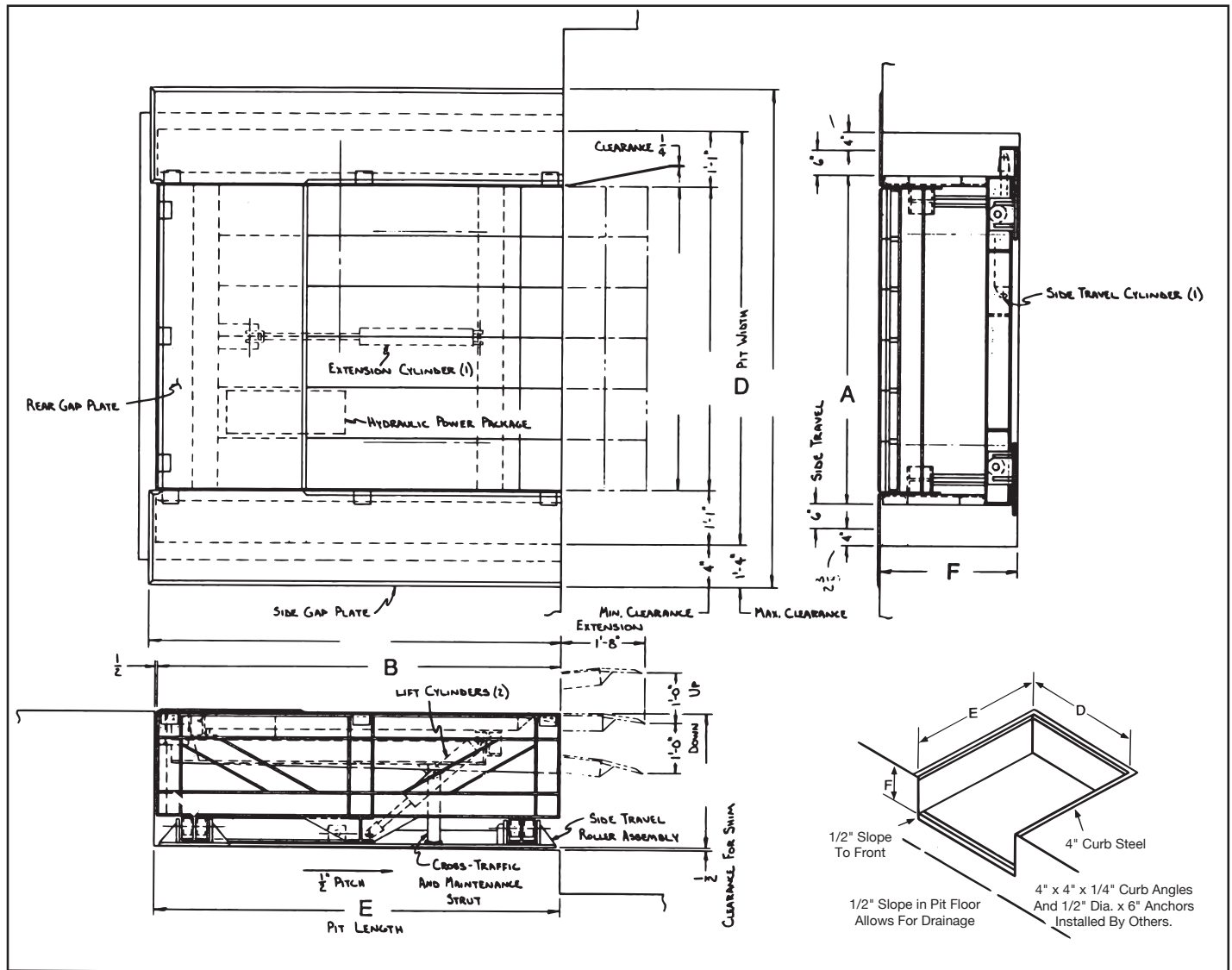
## CONSTRUCTION

**SF SERIES** Segmented Finger platform shall consist of longitudinal segments of length and construction necessary to meet required platform dimensions. Each finger or segment shall be properly hinged mounted and supported at the rear curb angle end to provide for the independent movement of each finger that is required to compensate for the maximum out of level condition of the truckbed.

**SS SERIES** solid platform shall consist of a longitudinal length platform and construction necessary to meet required platform dimensions. The platform shall be properly hinged mounted and supported at the rear curb angle end to provide required compensation for the maximum out of level condition of the truckbed.

The surface of the ramp platform and lip shall be of non-skid steel floor plate.

Purchase Order No:		Approved Date:	Ship:
Purchaser:		Dealer:	
Contractor:		Architect:	
Project:		Location:	
Model No:	Size:	Quantity:	Capacity:



**RAMP SIDES:** The sides of the ramp shall be provided with steel skirts as safety measure and shall be securely attached.

**PITS AND CONCRETE WORK:** All concrete work by contractor. Pit to be constructed per drawing supplied for each installation. All curb angles by contractor.

## HYDRAULICS

2.5 gpm pump, solenoid controlled valves and a pressure relief valve. The S Series' 7 gallon oil reservoir, with a sight gage and filler-breather cap, is mounted nearby. Easy maintenance from inside the building is obtained through the rear gap plate of the SF and SS Series leveler.

**CYLINDERS:** Cylinders shall be single/double acting accurately machined.

All levelers have two 3 1/2" I.D. hydraulic lift cylinders with 2" diameter solid hard chrome plated rods. The S Series have 3 1/2" I.D. extension and side shift cylinders.

## ELECTRICAL

The SF and SS Series' electro-hydraulic power unit is complete with a 3 hp. totally enclosed fan cooled electric motor.

The pushbutton controls are pre-wired and mounted in a fully gasketed, Nema 4X noncorrosive indoor-outdoor control box enclosure.

The motor is totally enclosed, fan cooled and is rated at 208/240/440 volts, 3 phase, 60 Hz. Other motor types are available on request.

All provided electrical components, connections and wiring are UL listed, approved or recognized. Motor starter, disconnect switch, transformer, wiring and conduit are not supplied as standard equipment.

## SAFETY EQUIPMENT

A hydraulic safety fuse is provided to limit loaded platform free fall to 4" should a truck or trailer separate from the dock.

Mechanical legs on the S Series act as safety supports for the platform during maintenance service.

Full range toe guards are standard with every leveler.

## PAINT

Durable polyurethane enamel paint is used on all parts of the leveler. The platforms, toe guards and major moving parts are safety yellow while the frame, hydraulic cylinders and other components are safety blue.

## OWNERS MANUAL

Owners Manual comes with each unit, including Serial Numbers, General Information, Installation and Anchoring Instructions, Wiring Schematics, Hydraulics Schematics, Operating Instructions, Loading and Unloading Instructions, Maintenance Instructions, Trouble Shooting Chart, Part Numbers Listed.

## LEVELER WARRANTY

The S Series comes with a Limited Warranty-5 Years on structure, 3 Years on hydraulic components and 1 Year on electrical components.