

HPK-BEH Series Tall Dock Leveler

HYDRAULIC DOCK LEVELER 20,000, 30,000 lb. CAPACITIES

ARCHITECTURAL SPECIFICATIONS

GENERAL

The HPK-BEH Series pit mounted hydraulic dock levelers are available in one heavy duty style.

HPK-BEH Series - Two movement with 16" hinged flip lip.

DESCRIPTION

Adjustable hydraulic dock leveler with two movements: (1) Up, (2) down. Dock leveler to be _____ ft. Long x _____ ft. wide with a static capacity of _____ lbs. Platform to be constructed of floor plate reinforced by C channel deck support beams. Units are powered with a 2 HP, 2 GPM pump that activates the deck hydraulic cylinder. The deck and 16" hinged flip lip extends on to the vehicle when the start button is depressed. The HPK-BEH Leveler automatically recycles to stored cross traffic position when the vehicle departs or may be recycled with the vehicle at the dock. 24" total vertical travel, 12" above floor level and 12" below floor level for all frames. Deck will compensate a maximum of 4" from side to side to service unlevel vehicles. Dock leveler is constructed of 55,000 lb. Minimum yield steel tread plate. Dock leveler to be equipped with full operating range toe guards and a set of dock bumpers. Dock leveler to meet the performance requirements of OSHA and ANSI MH30.1.

DIMENSIONS

NOTE: The sizes below are nominal lengths

MODEL	CAP. (LBS.)	WIDTH	NOMINAL LENGTH	HEIGHT	WEIGHT
HPK-BEH-56-30-20	20,000	62"	6'	30"	1590
HPK-BEH-66-30-20	20,000	72"	6'	30"	1650
HPK-BEH-76-30-20.5	20,000	78"	6'	30"	1710
HPK-BEH-56-38-20	20,000	62"	6'	38"	1770
HPK-BEH-66-38-20	20,000	72"	6'	38"	1830
HPK-BEH-76-38-20.5	20,000	78"	6'	38"	1890
HPK-BEH-56-48-20	20,000	62"	6'	48"	1950
HPK-BEH-66-48-20	20,000	72"	6'	48"	2010
HPK-BEH-76-48-20.5	20,000	78"	6'	48"	2070
HPK-BEH-58-30-20	20,000	62"	8'	30"	1740
HPK-BEH-68-30-20	20,000	72"	8'	30"	1800
HPK-BEH-78-30-20.5	20,000	78"	8'	30"	1860
HPK-BEH-58-38-20	20,000	62"	8'	38"	1920
HPK-BEH-68-38-20	20,000	72"	8'	38"	1980
HPK-BEH-78-38-20.5	20,000	78"	8'	38"	2040
HPK-BEH-58-48-20	20,000	62"	8'	48"	2100
HPK-BEH-68-48-20	20,000	72"	8'	48"	2160
HPK-BEH-78-48-20.5	20,000	78"	8'	48"	2220
HPK-BEH-56-30-30	30,000	62"	6'	30"	1775
HPK-BEH-66-30-30	30,000	72"	6'	30"	1815
HPK-BEH-76-30-30.5	30,000	78"	6'	30"	1875
HPK-BEH-56-38-30	30,000	62"	6'	38"	1935
HPK-BEH-66-38-30	30,000	72"	6'	38"	1995
HPK-BEH-76-38-30.5	30,000	78"	6'	38"	2055
HPK-BEH-56-48-30	30,000	62"	6'	48"	2115
HPK-BEH-66-48-30	30,000	72"	6'	48"	2175
HPK-BEH-76-48-30.5	30,000	78"	6'	48"	2235
HPK-BEH-58-30-30	30,000	62"	8'	30"	1905
HPK-BEH-68-30-30	30,000	72"	8'	30"	1965
HPK-BEH-78-30-30.5	30,000	78"	8'	30"	2025
HPK-BEH-58-38-30	30,000	62"	8'	38"	2085
HPK-BEH-68-38-30	30,000	72"	8'	38"	2145
HPK-BEH-78-38-30.5	30,000	78"	8'	38"	2205
HPK-BEH-58-48-30	30,000	62"	8'	48"	2265
HPK-BEH-68-48-30	30,000	72"	8'	48"	2325
HPK-BEH-78-48-30.5	30,000	78"	8'	48"	2385



SCOPE

This specification describes a push button control hydraulic operated adjustable recycle dock leveler, to be installed in a pit and/or affixed to loading platforms and to compensate for uneven heights between the truck bed and dock.

OPERATION

The Beacon HPK-BEH Hydraulic dock levelers are simple to operate with wall-mounted push button control with auto and manual rest. When raising the Beacon deck, you will find the deck and lip action fully automatic. When the Beacon deck is raised the lip automatically extends, the deck and lip descend to the floor of the truck trailer when the button is released. The HPK-BEH Series automatically recycles when the trailer departs.

For below dock tailgate loading or unloading, turn the selector to below dock mode, when the deck is raised the lip clears the keepers and the unit descends to the bottom of the pit.

CONSTRUCTION

The capacities of the HPK-BEH are available from 20,000 to 30,000 lb. Structural C channel deck support beams are 100% welded to the back of the 3/8" x 6" header plate, 6 each under 6' wide models and 8 each under 7' wide models. Deck shall be 1/4" thick, lip shall be 1/2" thick on our 20 & 30,000 lb. capacities. Deck assembly and lip shall be 16,000 minimum yield steel tread plate. Hinges with 1-1/8" diameter rod pin (HR) 50+3" tubing with 5/8" wall thick with 1-5/8" pin (HR).

HYDRAULICS

2 GPM hydraulic pump. Hydraulic deck and lip with automatic return to dock. HPK-BEH is equipped with an in line safety valve to prevent leveler deck from free fall in case of premature trailer departure. Hydraulic lift cylinder is 2" bore x 18" stroke and lip cylinder is 2" bore x 8" stroke.

ELECTRICAL

The HPK-BEH series electrohydraulic unit is complete with a 2HP totally closed non-ventilated motor to be factory tested for 460V, 3 PH. 60 HZ as specified. Unit includes a limit switch for the auto reset capability. All operations to be push button controlled from a single pre-wired NEMA 12 wall-mounted steel enclosure. All electrical hook-ups are by others.

Beacon Industries, inc.

12300 Old Tesson Rd.

St. Louis, MO 63128-2247 USA

Phone: (314) 487-7600 Fax: (314) 487-0100

www.beacontechnology.com

E-Mail: sales@beacontechnology.com

SAFETY EQUIPMENT

RAMP SIDES: The sides of the ramp shall be provided with full operating range steel safety toe guards. The Beacon lip keepers are installed for your protection while in storage for night security along with providing safe and secure cross traffic support. A safety velocity fuse prevents sudden fall while loading should the leveler become unsupported by the trailer. A maintenance strut is provided with each leveler. Two 4-1/2" x 14" x 10" molded dock bumpers shall be supplied with each dock leveler.

OPTIONAL FEATURES

- 460 Vac 3 phase standard (Other voltages optional)
- Weather Seals.
- Lip 18" (14" projection).
- Lip 20" (16" projection).
- Emergency Stop Feature.
- Independent Lip Control.
- Cold Weather Hydraulic Oil
- Foam insulation.
- Abrasive Surface.
- Pit Curb Angle Kit.
- Yellow & Black Diagonal Striping on Full Sides.
- Lifting Eyes & Chains
- Shallow Pit Option: 17-1/2" minimum depth

PAINT

Beacon Grey

OWNERS MANUAL

Owners Manual comes with each unit, including General Information, Pit preparation, Leveler preparation, Anchoring Instructions, Wiring Diagram, Operating Instructions, Troubleshooting, Parts Listed.

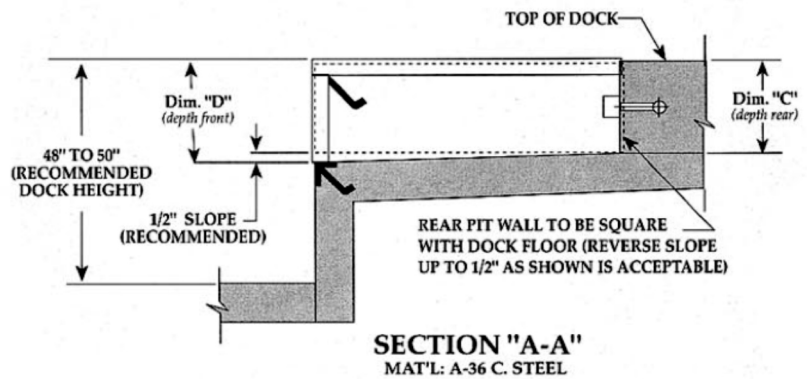
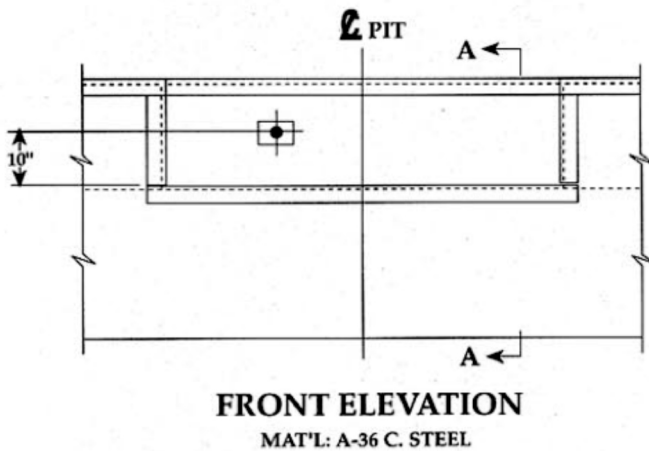
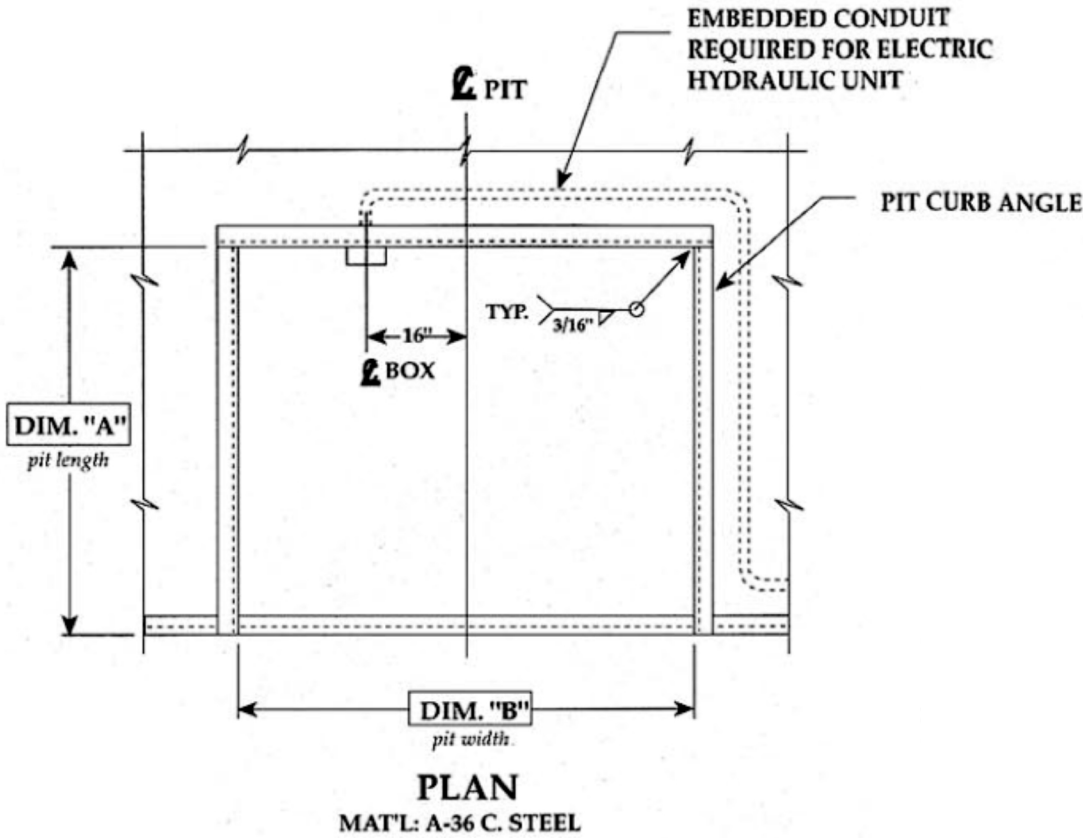
LIMITED WARRANTY

The HPK-BEH Series comes with a Limited Warranty - 5 years on structural members, cylinders and proximity sensors, 1 year on motor/pump and miscellaneous parts.

BEACON

HPK-BEH Series Hydraulic Dock Leveler

Pit Detail



Not To Scale

NOTES

JOB

DRAWN: J.M.G.	SCALE: AS NOTED	DATE: 1/30/95	DRAWING NUMBER: PMI-2014-R1
------------------	--------------------	------------------	--------------------------------

TOLERANCES:		
Inch Dimension = ±1/16"	Decimal Dimension = ±.005	Angles = ±1°

BEACON INDUSTRIES, INC™

12300 Old Tesson Rd., St. Louis, MO 63128, USA

Ph: 314-487-7600 USA - Call Toll Free USA 800-454-7159 - Fax: 314-487-0100