

HPK Series

Truck Service

Four Movement Hydraulic Telescopic Dock Leveler



ARCHITECTURAL SPECIFICATIONS

GENERAL

HPK Series Pit Mounted Hydraulic Dock levelers are available with the long lasting telescopic slide deck platforms.

HPK Series – Four Movement with 24" telescopic deck platform.

DESCRIPTION

Adjustable Hydraulic Dock Leveler with four movements: (1) Up, (2) Down, (3) Forward, (4) Reverse.

Dock Leveler to be 6___ Ft. Wide x ___8___ Ft. Long with a rollover capacity of 30,000 lbs. Platform to extend horizontally 24" and have 24" vertical travel. Platform to be solid and able to compensate for a canted truck up to 4". Constructed of 1/4" tread plate reinforced by I beams. Lip to be 3/4" tread plate. Dock Leveler shall be complete with 2 HP, 2.44 GPM electro-hydraulic power unit, 2-4" double acting hydraulic cylinders with 1-3/4" rod. Dock Leveler to be equipped with full range toe guards, hydraulic velocity fuse, cross traf c/maintenance safety support legs. Also included are Two 4 1/2" x 10" x 14" Laminated Dock Bumpers. Dock Leveler to meet or exceed OSHA requirements, ANSI MH 30.1-2007. To be Beacon HPK Series as sold by Beacon Industries, Inc.

DESCRIPTION

Unlike a standard hinged lip leveler, the slide deck has a continuous platform, making the unit inherently safer during dock operations. If a truck prematurely departs with dock personnel and equipment still on the leveler/lip the leveler supports the entire load to the end of its extended deck/lip.



CONTROL STATION BOX

SCOPE

The Beacon HPK Series Dock Levelers are designed to accommodate docks with high volumes of traf c, servicing most over the road trucks. These dock levelers are designed to extend out toward the truck bed. The **HPK Series** 100% hydraulically adjustable dock levelers have four movements:

1-UP; 2-DOWN; 3-FORWARD; 4-REVERSE
Size and movements are nominal dimensions.

Total control of all movements is achieved with the use of clearly marked selector controls and pushbuttons. Standard models are capable of a 24" vertical working range including 12" above and 2" below the level position. The 24" platform extends 19.5" beyond the face of the 4 1/2" laminated dock bumpers by Beacon. This combination of features enables the **HPK Series** Levelers to meet over the road trucks of almost any type.

BEACON IS BUILT TO LAST

Beacon is one of the few companies that rate their levelers with ACTUAL dynamic roll-over capacities. We are proud of the way we rate our equipment. Our levelers are built to see loads, day-in and day-out, year after year. As a true 30,000 lb. dynamic rated dock leveler and with levelers still in use since the 1960's you will discover our Beacon telescopic slide deck dock levelers are the most durable.

Vertical Travel



DIMENSIONS

MODEL	A DL WTH	B DL LNG	C DL HGT	D PIT WTH	E PIT LNG	F PIT HGT
HPK-6630-30	6"	6"	29.5"	74"	6"	30"
HPK-66630-30	6'6"	6"	29.5"	80"	6"	30"
HPK-7630-30	7"	6"	29.5"	86"	6"	30"
HPK-6830-30	6"	8"	29.5"	74"	8"	30"
HPK-68830-30	6'6"	8"	29.5"	80"	8"	30"
HPK-7830-30	7"	8"	29.5"	86"	8"	30"
HPK-61030-30	6"	10"	29.5"	74"	10"	30"
HPK-661030-30	6'6"	10"	29.5"	80"	10"	30"
HPK-71030-30	7"	10"	29.5"	86"	10"	30"
HPK-61130-30	6"	11"	29.5"	74"	11"	30"
HPK-71130-30	7"	11"	29.5"	86"	11"	30"

CAPACITY: 30,000 lb. dynamic rollover

*DL = Dock Leveler Dimensions
*PIT = PIT Size Dimensions
Special Sizes Available
Pit Shall Have 1/2" Slope to Front

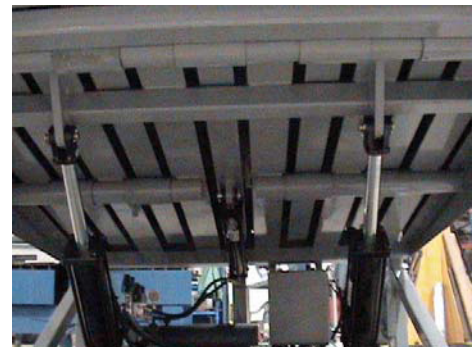
OPERATION

After the truck is in place, turn the "UP/DOWN" selector to "UP" to raise the platform. When the platform is at least four inches above level, release the selector control. The platform stops and will not settle down. This feature allows for exact positioning of the platform lip. Turn the "FORWARD" selector control to extend the platform out toward the truck bed. When the platform is over the truck bed, release the "FORWARD" selector control to stop the platform. Next turn the "UP/DOWN" selector control to "DOWN" and the platform will settle down to the truck bed.

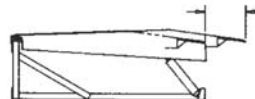
To store the platform, turn the "UP/DOWN" selector control to "UP". When the platform clears the truck bed and is at least 4" above level, release the selector control. Push the "REVERSE" selector control until the platform is completely retracted. Then turn the "UP/DOWN" selector control "DOWN" to complete the storing cycle. At any time, the "EMERGENCY STOP" button can be pushed to stop any and all movements of the dock leveler. The ramp shall be provided with electric selector controls for the four movements: 1-UP; 2-DOWN; 3-EXTEND; 4-RETRACT.

The ramp platform shall be provided with an extending deck/lip section, designed to increase its length in the same plane, from the fully retracted position to the fully extended position.

The ramp platform, including the extending deck/lip shall be free oating, after the lip of the extension has been positioned on the truck bed or tailgate.



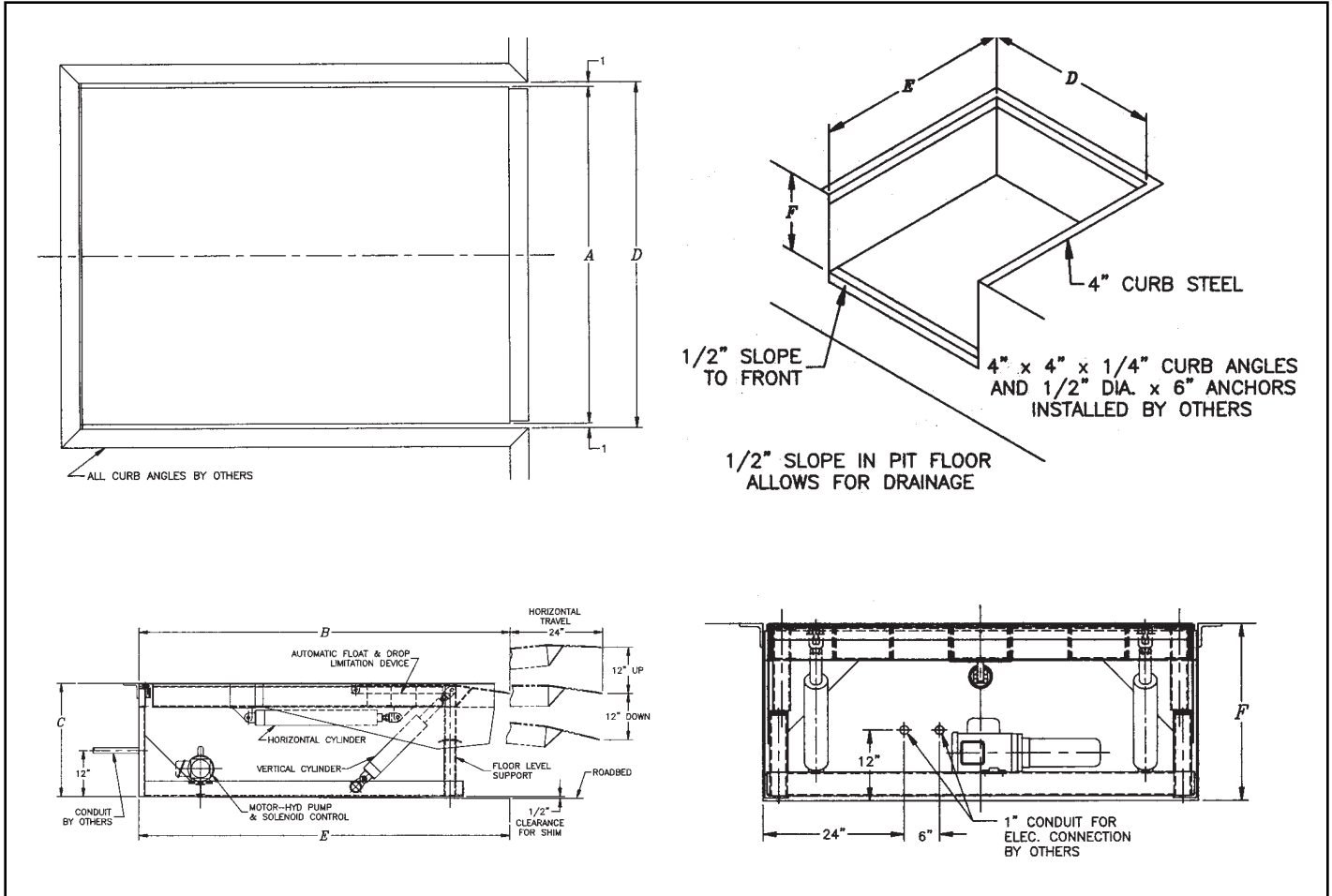
Horizontal Travel



Tilt Compensation



Purchase Order No:		Approved Date:	Ship Date:
Purchaser:		Dealer:	
Contractor:		Architect:	
Project:		Location:	
Model No:	Size:	Quantity:	Capacity:



FEATURES

- HPK SERIES Hydraulic Leveler to include:
- Full Range Toe Guards with Safety Striping
- Deck Safety Striping
- Telescoping Deck for High Traffic Cycles
- 24" Telescoping Deck/Lip for long reaches
- Below Deck Control
- Out of Level Compensation
- Float Compensation
- Maintenance Safety Strut
- Two - 4 1/2" x 10" x 14" Laminated Dock Bumpers

CONSTRUCTION

HPK SERIES platform is made up of a rear deck and a sliding solid deck. The rear deck is attached at the rear of the frame and the sliding deck moves inside the rear deck by the telescoping hydraulic cylinder to extend out to the truck.

The deck is constructed of 1/4" thick steel tread plate, reinforced with I-beam substructure design. The 14" lip is made of 3/4" thick, high strength tread plate and is gusseted and welded to the sliding deck.

The HPK SERIES solid platform shall consist of a longitudinal length platform and construction necessary to meet the required platform dimensions. The platform shall be properly hinged, mounted and supported at the rear curb C channel to provide required compensation for the maximum out of level condition of the truck bed.

The surface of the ramp platform and lip shall be of non-skid steel treadplate. The sides of the ramp shall be provided with full range steel safety toe guards as a safety measure and shall be securely attached.

The selector controls shall be of the type requiring constant pressure so the removal of pressure immediately stops all ramp movement.

The dock ramp shall be a packaged type, completely assembled unit with all components and load bearing structural members within its own steel frame, requiring only anchoring in position and electrical connections.

PITS AND CONCRETE WORK: All concrete work by contractor. Pit to be constructed per drawing supplied for each installation. All curb C channels, and angles shall be quoted separately.

HYDRAULICS

Hydraulic pump, Check Valve, Solenoid Control Valve, Flow Control Valve included. The oil reservoir includes a fluid level sight gauge. The two lift cylinders are 4" bore with 1-3/4" rods and one telescopic hydraulic cylinder is 3" bore with 1-3/8" rod.

ELECTRICAL

The HPK SERIES electro-hydraulic power unit is complete with a 2 HP totally enclosed fan-cooled electric motor rated at 208/230/460 volts, 3 phase, 60 Hz. Other motor types are available on request.

The push-button controls re pre-wired and mounted in a fully gasketed, NEMA 4X non-corrosive indoor-outdoor enclosure control station box.

All provided individual components and wire will be UL listed approved or recognized. Finished electrical assemblies shall conform to National Electric Code (NFPA 70). Motor starter, transformer is supplied as standard equipment.

PAINT

Durable polyurethane enamel paint is used on all parts of the Leveler. The platform, frame, toe guards and all components are Beacon grey. The HPK SERIES are standard with safety stripes on the full range toe guards, including 6" safety stripes on the deck surface.

OWNER'S MANUAL

Owner's Manual comes with each unit, including Serial Numbers, General Information, Installation and Anchoring Instructions, Wiring Schematics, Hydraulics Schematics, Operating Instructions, Loading and Unloading Instructions, Maintenance Instructions, Trouble Shooting Chart with Part Numbers Listed.

LEVELER WARRANTY

HPK SERIES comes with a Limited Warranty - 5 Years on structure, 3 Years on hydraulic components and 1 Year on electrical components.