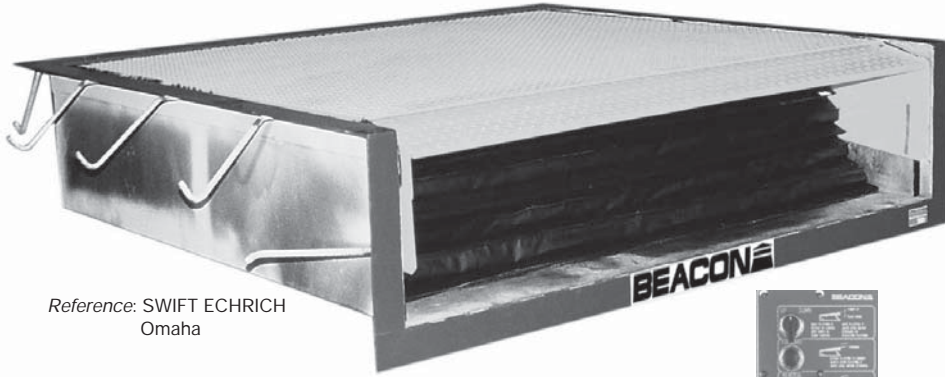


TE Series

Truck Service

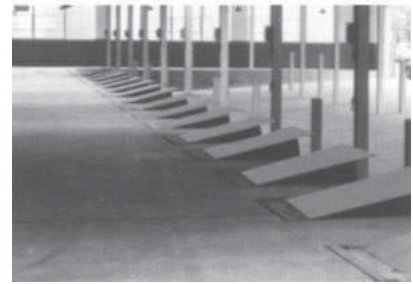
Four Movement Hydraulic Telescopic Slide Deck Dock Leveler, Contractors Model, with easy to clean factory formed pit pan.



Reference: SWIFT ECHRICH
Omaha



CONTROL STATION BOX



ARCHITECTURAL SPECIFICATIONS

GENERAL

The TE Series pit mounted hydraulic dock leveler is available as a contractor Model.

- **TE Series - Four movement with 20" telescopic ramp platform**

DESCRIPTION

TE SERIES

Adjustable hydraulic dock leveler with four movements: (1) Up, (2) Down, (3) Forward, (4) Reverse. Dock leveler to be ____ ft. long x ____ ft. wide with a rollover capacity of ____ lbs. Platform to extend horizontally 20 in. and have 24 in. vertical travel 12" up & 12" down. Platform to be solid constructed and the floor plate reinforced by formed members with 55,000 yield strength fixed lip. Dock leveler shall be complete with 1 HP, 1.5 GPM electro-hydraulic power unit and 3 1/2" ID lift and a 2 1/2" ID extension double acting hydraulic cylinders. Dock leveler to be equipped with full range safety skirts and hydraulic velocity fuse. Dock leveler to meet or exceed OSHA requirements, ANSI MH 30.1-1993 and CS 202-56 specs. To be Beacon Model _____ as sold by Beacon Machinery, Inc.



DIMENSIONS

MODEL	A DL WTH	B DL LNG	C DL HGT	D PIT WTH	E PIT LNG	F PIT HGT
TE65	6'	5'	18 5/8"	74"	5'	19"
TE665	6'6"	5'	18 5/8"	80"	5'	19"
TE75	7'	5'	18 5/8"	86"	5'	19"
TE66	6'	6'	18 5/8"	74"	6'	19"
TE666	6'6"	6'	18 5/8"	80"	6'	19"
TE76	7'	6'	18 5/8"	86"	6'	19"
TE67	6'	6'	18 5/8"	74"	6'	19"
TE77	7'	7'	18 5/8"	86"	7'	19"
TE68	6'	8'	18 5/8"	74"	8'	19"
TE78	7'	8'	18 5/8"	86"	8'	19"
TE668	6'6"	8'	18 5/8"	80"	8'	19"

*DL = Dock Leveler Dimensions
*PIT = PIT Size Dimensions
Custom Sizes Available
Pit Shall Have 1/2" Slope To Front

OPERATION

TE SERIES TELESCOPIC

CONTROL: The ramp shall be provided with electric pushbutton control for the four movements:

1-UP; 2-DOWN; 3-EXTEND; 4-RETRACT

RAMP EXTENSION: The ramp platform shall be provided with extending section, designed to increase its length in the same plane by 20", from the fully retracted position to the fully extended position.

After the truck is in place, turn the "UP/DOWN" switch to "UP" to raise the platform. When the platform is at least four inches above level, release the switch, the platform stops and will not settle down. This feature allows for exact positioning of the platform lip. Push the

"FORWARD" button to extend the platform out toward the truck bed. When the platform is over the truck bed release the "FORWARD" button to stop the platform. Next turn the "UP/DOWN" switch to "DOWN" and the platform will settle down to the truck bed.

To store the platform, turn the "UP/DOWN" switch to "UP." When the platform clears the truck bed and is at least 4" above level, release the switch. Push the "REVERSE" button until the platform is completely retracted. Then turn the "UP/DOWN" switch to "DOWN" to complete the storing cycle. At any time, the "EMERGENCY STOP" button can be pushed to stop any and all movements of the dock leveler.

CONSTRUCTION

TE SERIES comes with a continuous surface platform of non-skid steel floor plate and shall be provided suitably reinforced to carry the dynamic rated load.



Dock leveler is welded in an optional prefabricated 12 ga. galvanized pit pan including all curb angles and J anchors. This pit pan makes pouring concrete pits quick and easy.

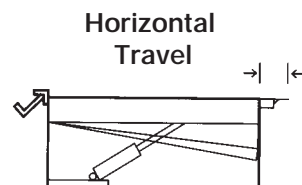
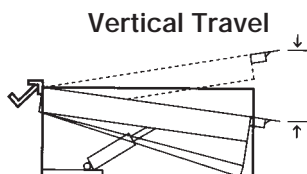
OUT OF LEVEL COMPENSATION: The ramp platform, including the extension shall be "free floating", after the lip of the extension has been positioned on the truckbed or tailgate.

SCOPE

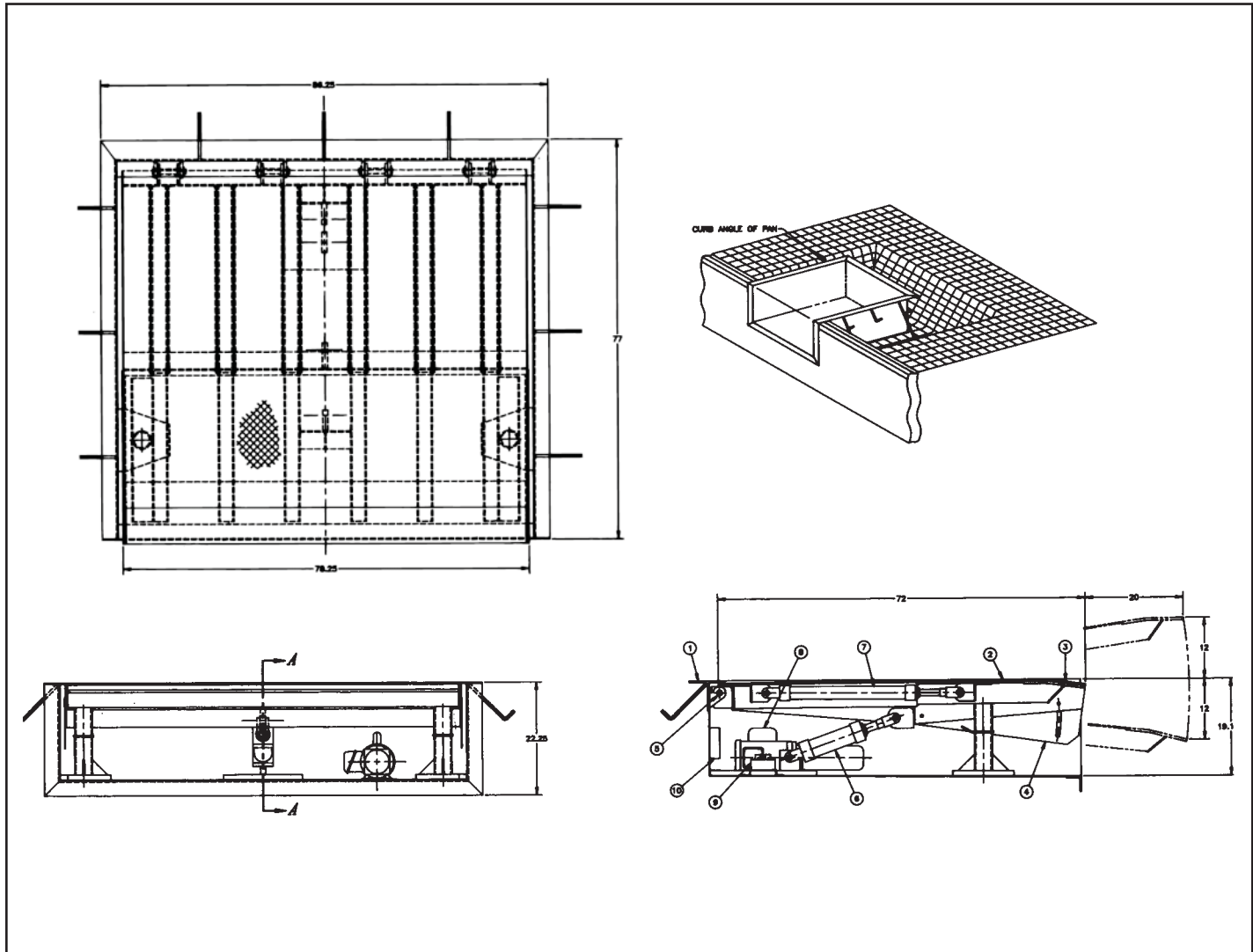
This specification describes a power operated, adjustable hydraulic dock ramp, to be installed in and/or affixed to loading platforms and to compensate for uneven heights between the truckbed.



The TE Series is manufactured to have a 24" working range of 12" above to 12" below dock.



Purchase Order No:		Approved Date:		Ship Date:	
Purchaser:		Dealer:			
Contractor:		Architect:			
Project:		Location:			
Model No:		Size:		Quantity:	
				Capacity:	



CAPACITY: The ramp shall have a roll-over capacity of 20,000 pounds, with automatic free float, up or down, to compensate for movement of the truckbed caused by rising or lowering of truck body in loading or unloading operations.

PITS AND CONCRETE WORK: All concrete work by others. Pit to be constructed per drawing supplied for each installation. All Pit Curb angles and J anchors by Beacon with pit pan.

HYDRAULICS

TE SERIES

1.5 GPM electro-hydraulic power unit. One 3 1/4" ID and one 2 1/2" ID double acting hydraulic cylinders. 3 1/2 gallon oil reservoir.

ELECTRICAL

The TE Series' electro-hydraulic power unit is complete with a 1 hp. totally enclosed fan cooled electric motor and are rated at 208/240/440 volts, 3 phase, 60 Hz. Other motor types are available on request.

The pushbutton controls are pre-wired and mounted in a fully gasketed, Nema 4X noncorrosive indoor-outdoor enclosure box.

All provided electrical components, connections and wiring are UL listed, approved or recognized. Motor starter, disconnect switch, transformer, wiring and conduit are supplied as standard equipment.

MULTI APPLICATION

The TE Series electro-hydraulic power unit can accommodate the following Multi Application using the same motor, reservoir and pump.

- 5 Levelers —
- 10 Levelers —
- 20 Levelers —

SAFETY EQUIPMENT

RAMP SIDES: The sides of the ramp shall be provided with steel skirt toeguards as a safety measure and shall be securely attached.

PAINT

Durable polyurethane enamel paint is used on all parts of the leveler. The platforms, toeguards and major moving parts are safety yellow while the frames, hydraulic cylinders and other components are safety blue.

OWNERS MANUAL

Owners Manual comes with each unit, including Serial Numbers, General Information, Installation and Anchoring Instructions, Wiring Schematics, Hydraulics Schematics, Operating Instructions, Loading and Unloading Instructions, Maintenance Instructions, Trouble Shooting Chart, Part Numbers Listed.

LEVELER WARRANTY

The TE Series comes with a Limited Warranty-3 Years on structure, 3 Years on hydraulic components and 1 Year on electrical components.

Beacon Industries, Inc.
 12300 Old Tesson Rd.
 St. Louis, MO 63128-2247 USA
 Phone: (314) 487-7600 Fax: (314) 487-0100
www.beacontechnology.com
 E-Mail: sales@beacontechnology.com

BEACON