

BXA Series Truck Service

AIRBAG DOCK LEVELER 30,000, 35,000, 40,000 & 45,000 lb. CAPACITIES

Beacon Industries, inc.
12300 Old Tesson Rd.
St. Louis, MO 63128-2247 USA
Phone: (314) 487-7600 Fax: (314) 487-0100
www.beacontechnology.com
E-Mail: sales@beacontechnology.com

ARCHITECTURAL SPECIFICATIONS

GENERAL

The BXA Series pit mounted Airbag Loading Leveler is available in one heavy duty style.
BXA Series - Two movement with 16" hinged flip lip

DESCRIPTION

Adjustable airbag dock leveler with two movements: (1) Up, (2) down. Dock leveler to be _____ ft. long x _____ ft. wide with a static capacity of _____ lbs. Platform to be constructed of floor plate reinforced by deck support beams. The unit is powered with a 0.8 h.p. pump that activates the airbag. The deck and 16" hinged flip lip extends onto the vehicle when the rotary switch is activated. The BXA Leveler can be stored cross traffic position when the vehicle departs or for the vehicle at the dock. 24" total Vertical travel, 12" above floor level and 12" below floor level. Deck will compensate a maximum of 4" from side to side to service unlevel vehicles. Dock leveler is constructed of 55,000 lb. minimum yield steel tread plate. Dock leveler to be equipped with full operating range toe guards and a set of dock bumpers. Dock leveler to meet or exceed the performance requirements of CS202-56., OSHA and ANSI MH14.1-1984.

SCOPE

This specification describes a rotary switch control and airbag operated adjustable dock leveler to be installed in a pit and/or affixed to loading platforms and to compensate for uneven heights between the truck bed and dock.

DIMENSIONS

NOTE: The sizes below are nominal lengths.

MODEL	CAP. (LBS.)	WIDTH	NOMINAL LENGTH	DEPTH	WEIGHT
BXA6630	30,000	72"	19"	6"	1,341
BXA6630.5	30,000	78"	19"	6"	1,381
BXA7630	30,000	83"	19"	6"	1,527
BXA6830	30,000	72"	19"	8"	1,576
BXA6830.5	30,000	78"	19"	8"	1,616
BXA7830	30,000	83"	19"	8"	1,772
BXA6635	35,000	72"	19"	6"	1,396
BXA6635.5	35,000	78"	19"	6"	1,436
BXA7635	35,000	83"	19"	6"	1,642
BXA6835	35,000	72"	19"	8"	1,631
BXA6835.5	35,000	78"	19"	8"	1,671
BXA7835	35,000	83"	19"	8"	1,887
BXA6640	40,000	72"	19"	6"	1451
BXA6640.5	40,000	78"	19"	6"	1493
BXA7640	40,000	83"	19"	6"	1762
BXA6840	40,000	72"	19"	8"	1679
BXA6840.5	40,000	78"	19"	8"	1721
BXA7840	40,000	83"	19"	8"	2000
BXA6645	45,000	72"	19"	6"	1494
BXA6645.5	45,000	78"	19"	6"	1537
BXA7645	45,000	83"	19"	6"	1756
BXA6845	45,000	72"	19"	8"	1729
BXA6845.5	45,000	78"	19"	8"	1772
BXA7845	45,000	83"	19"	8"	2120



OPERATION

The Beacon BXA airbag loading leveler is simple to operate and are single remote controlled for all stages of operation. When raising the Beacon deck, you will find the deck and lip action fully automatic. When the Beacon deck is raised, the lip automatically extends the deck and lip descend to the floor of the truck trailer when the rotary switch is released. The BXA Series automatically descends when the trailer departs.

CONSTRUCTION

The capacities of the BXA are available in 30,000, 35,000, 40,000 & 45,000 lb. Support beams are 100% welded to the back of the 3/8" x 6" header plate on the 30,000 and (1/2" x 6" header on the 35,000, 40,000 & 45,000); 6 each support beams under 6' wide models and 8 each under 7' wide models. Deck shall be 1/4" Thick. Lip shall be 1/2" Thick on our 30,000 lb. capacities and 5/8" on our 35,000, 40,000 & 45,000 lb. capacities. Lip Hinge and Deck assembly shall be 1-5/8" seamless hinge tubing with a 1" cold roll 1045 steel rod for our 30,000 capacities and 2" seamless hinge tubing with a 1-1/8" cold roll 1045 steel rod for our 35,000, 40,000 & 45,000 lb. capacities. Deck and Lip shall be 55,000 minimum yield steel tread plate. All levelers include fork entry slots and lifting holes in the side plates for ease of handling during shipping and installation.

ELECTRICAL

The BXA series electric unit is complete with a 0.8 h.p. motor to be factory tested and wired for 115V, 1 PH. 60 HZ.. All functions will be controlled by rotary switch controlled from a single pre-wired NEMA 4x wall-mounted remote. All electrical hook-ups are by others.

SAFETY EQUIPMENT

RAMP SIDES: The sides of the ramp shall be provided with full operating range steel safety toe guards. The Beacon lip keepers are installed for your protection while in storage and for night security along with providing safe and secure cross traffic support. A maintenance strut is provided with each leveler. Two 4-1/2" x 10" x 12" laminated dock bumpers shall be supplied with each dock leveler.

OPTIONAL FEATURES

- Weather Seals.
- Lip 18" (14" projection).
- Lip 20" (16" projection).
- Base Frame Deep Pit Anchor Kit (4" channel for 23" deep pit) welded at factory.
- Foam insulation.
- Abrasive Surface.
- Self-forming pan with bottom (leveler welded in).
- EZ Pan (Self-forming) assembled at job site.
- Pit Curb Angle Kit.
- Yellow & Black Diagonal Stripping on Sides.

PAINT

Beacon Grey

OWNERS MANUAL

Owners Manual comes with each unit, including General Information, Pit preparation, Leveler preparation, Anchoring Instructions, Wiring Diagram, Operating Instructions, Troubleshooting, Parts Listed.

WARRANTY

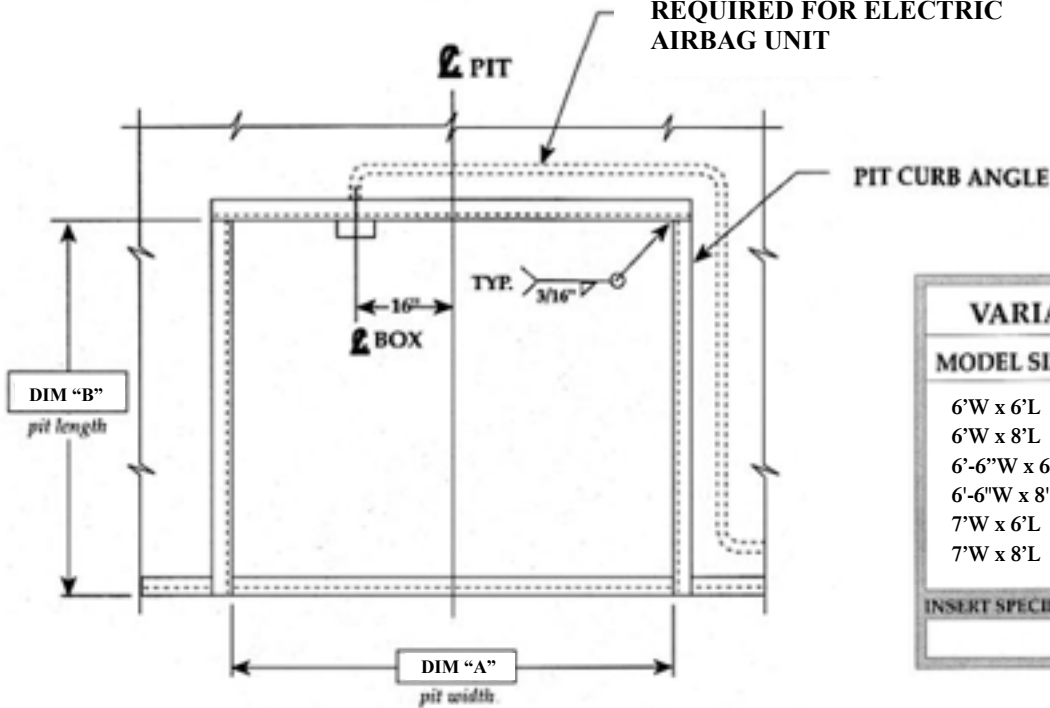
The BXA Series comes with a Limited Warranty - 3 years on structural members, and 1 year on motor, airbag and miscellaneous parts.

Special Warranty Note: Beacon will match any other company's warranty, just present to Beacon for written approval.

Heavier Capacity Units can be found in the
BEACON HEAVY DUTY LOADING DOCK
BUYERS GUIDE

BEACON BXA Series Airbag Dock Leveler Pit Detail

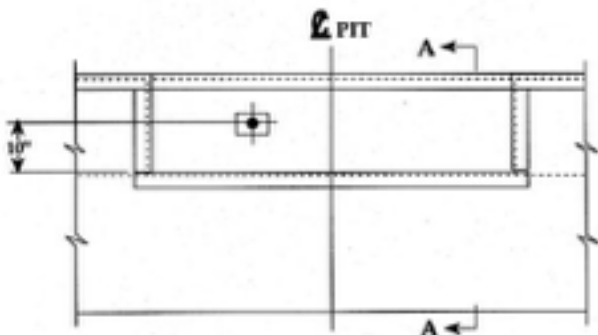
EMBEDDED CONDUIT
REQUIRED FOR ELECTRIC
AIRBAG UNIT



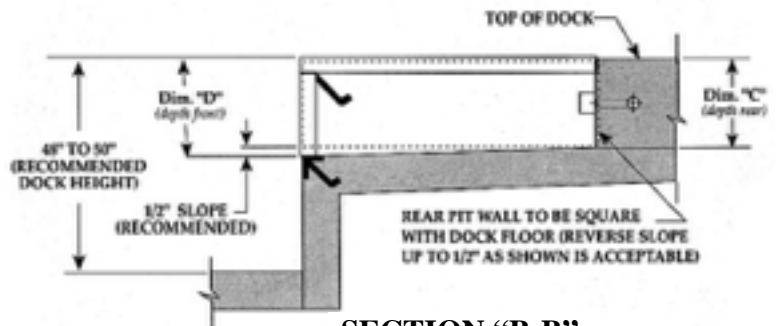
VARIABLE DIMENSIONS				
MODEL SIZE	"A"	"B"	"C"	"D"
6'W x 6'L	74"	63"	19½"	20"
6'W x 8'L	74"	87"	19½"	20"
6'-6"W x 6'L	80"	63"	19½"	20"
6'-6"W x 8'L	80"	87"	19½"	20"
7'W x 6'L	85"	63"	19½"	20"
7'W x 8'L	85"	87"	19½"	20"

INSERT SPECIFIC JOB DIMENSIONS FROM CHART

PLAN
MAT'L: A-36 C. STEEL



FRONT ELEVATION
MAT'L: A-36 C. STEEL



SECTION "B-B"
MAT'L: A-36 C. STEEL

Not To Scale

NOTES	DRAWN:	SCALE:	DATE:	DRAWING NUMBER:
JOB	JMG.	AS NOTED	1/2/00	FMI-2014-01
TOLERANCES:				
Each Dimension =		Decimal Dimension =	Angles =	
± 1/32"		± .005	± 1'	

BEACON INDUSTRIES, INC™

12300 Old Tesson Rd., St. Louis, MO 63128, USA

Ph: 314-487-7600 USA - Call Toll Free USA 800-454-7159 - Fax: 314-487-0100