

DOCK PLATES

STEEL DOCK BOARD

SERIES: **BTS-** CAPACITY - WIDTH LENGTH

- Bend is 11° and 9" from Edge
- Legs are 12" from Edge
- Treadplate Design Ensures Positive Traction
- Welded Safety Curbs for Maximum Strength



LEVER LIFT

Constructed of high strength (55,000 psi) steel for long life. Beveled edges on both ends permit smooth entry and exit. Deck is checkered for safe, efficient use. Locking legs minimize ramp movement and are uneven to allow the dockboard to sit canted for easier floor pickup by forklifts. Standard with lever lift for quick portability. Optional accessories: Lifting Chains, Span Locks, Spain Pins & Holes, and Removable Pickup Loops.

CAPACITY 10,000 lbs.	MODEL	HEIGHT DIFFERENCE	SIZE (W x L)
	BTS-10-6036	5"	60" x 36"
BTS-10-6048	7"	60" x 48"	
BTS-10-6060	10"	60" x 60"	
BTS-10-6072	12"	60" x 72"	
BTS-10-7236	5"	72" x 36"	
BTS-10-7248	7"	72" x 48"	
BTS-10-7260	10"	72" x 60"	
BTS-10-7272	12"	72" x 72"	

CAPACITY 15,000 lbs.	MODEL	HEIGHT DIFFERENCE	SIZE (W x L)
	BTS-15-6036	5"	60" x 36"
BTS-15-6048	7"	60" x 48"	
BTS-15-6060	10"	60" x 60"	
BTS-15-6072	12"	60" x 72"	
BTS-15-7236	5"	72" x 36"	
BTS-15-7248	7"	72" x 48"	
BTS-15-7260	10"	72" x 60"	
BTS-15-7272	12"	72" x 72"	

CAPACITY 20,000 lbs.	MODEL	HEIGHT DIFFERENCE	SIZE (W x L)
	BTS-20-6036	5"	60" x 36"
BTS-20-6048	7"	60" x 48"	
BTS-20-6060	10"	60" x 60"	
BTS-20-6072	12"	60" x 72"	
BTS-20-7236	5"	72" x 36"	
BTS-20-7248	7"	72" x 48"	
BTS-20-7260	10"	72" x 60"	
BTS-20-7272	12"	72" x 72"	

CAPACITY 25,000 lbs.	MODEL	HEIGHT DIFFERENCE	SIZE (W x L)
	BTS-25-6036	5"	60" x 36"
BTS-25-6048	7"	60" x 48"	
BTS-25-6060	10"	60" x 60"	
BTS-25-6072	12"	60" x 72"	
BTS-25-7236	5"	72" x 36"	
BTS-25-7248	7"	72" x 48"	
BTS-25-7260	10"	72" x 60"	
BTS-25-7272	12"	72" x 72"	

CAPACITY 30,000 lbs.	MODEL	HEIGHT DIFFERENCE	SIZE (W x L)
	BTS-30-6036	5"	60" x 36"
BTS-30-6048	7"	60" x 48"	
BTS-30-6060	10"	60" x 60"	
BTS-30-6072	12"	60" x 72"	
BTS-30-7236	5"	72" x 36"	
BTS-30-7248	7"	72" x 48"	
BTS-30-7260	10"	72" x 60"	
BTS-30-7272	12"	72" x 72"	

ALUMINUM DOCK BOARD

SERIES: **BAHTD-** WIDTH LENGTH

Ramps are lightweight and can be carried and positioned by one person. Provides a safe and convenient bridge between dock and truck. Welded aluminum diamond tread surface and beveled edges provide safe and smooth entry and exit. The bend is designed to keep ramp edges flush with dock surface and truck floor. Equipped with bolted locking legs. Full length aluminum curbs provide hand holds and reduce chance of roll off.



MODEL	WIDTH	LENGTH	CAPACITY
BAHTD-3036	30"	36"	800
BAHTD-3048	30"	48"	800
BAHTD-3060	30"	60"	800
BAHTD-3072	30"	72"	800

MODEL	WIDTH	LENGTH	CAPACITY
BAHTD3648	36"	48"	800
BAHTD3660	36"	60"	800
BAHTD3672	36"	72"	800
BAHTD3696	36"	96"	800

Designed for use with two wheel hand trucks only.

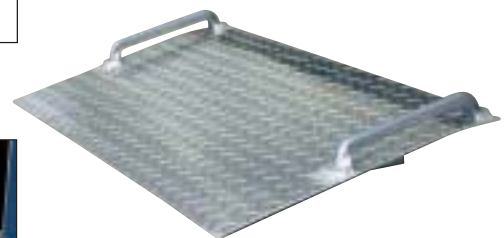
LOADING DOCK RAMP

SERIES: **BAMD-** WIDTH LENGTH

Scale 3" to 6" curbs and high door thresholds with ease using this durable Loading Dock Ramp. Ideal for use with hand trucks for deliveries. Aluminum construction is lightweight yet durable. Features carrying handle and diamond treadplate surface for better traction.



Designed for use with two wheel hand trucks only.



MODEL	WIDTH	LENGTH	CAPACITY
BAMD-2418	24"	18"	500 lbs.
BAMD-3018	30"	18"	600 lbs.
BAMD-3618	36"	18"	700 lbs.

DOCK PLATES SURVEY & ACCESSORIES

DOCK PLATES SURVEY SHEET

1 Description

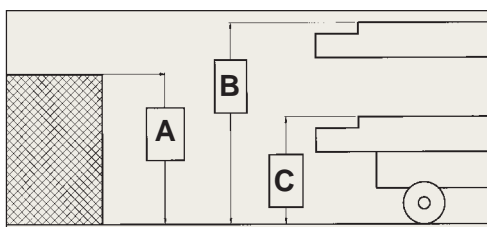
Dock Plates with side curbs are for use with fork trucks. Dock plates without side curbs are for use primarily with two and four wheel hand trucks and pallet jacks.

3 Aluminum vs. Steel

Steel is recommended for high traffic areas. Aluminum provides portability and convenience.

5 Calculating Height Differential

To determine **Maximum Height Difference** fill in dimensions A, B & C. Subtract dimensions A from dimensions B [(B) - (A)], then subtract dimensions C from dimension A [(A) - (C)]. The larger of these two numbers is the **Maximum Height Difference**.



A = Dock Height
B = Highest Trailer
C = Lowest Trailer

GUIDE TO TRAILER FLOOR HEIGHTS (empty)

Refrigerated	54" - 61"
Heavy Flat Bed Trailers	51" - 56"
Heavy Semi-Trailers	48" - 54"
Light Semi-Trailers	45" - 49"
Large Single Bed	42" - 50"
Small Single Bed	30"

2 Determining Width

Width of dockboard should be at least 15" wider than load or equipment passing between curbs. If load does not pass between curbs but is elevated above, add 15" to overall width of equipment. (*Usable width is approximately 6" less than overall width*).

4 Calculating Capacity

Capacity = Load + Weight of Fork Truck (Pallet Truck)

6 Determining Length

Length is based on Percent of Grade & Maximum Height Difference.

Two-Wheel Hand Truck	12°/21%
Four-Wheel Platform Truck - Non-Tilt	11°/19%
Pallet Trucks - Hand	8°/14%
Pallet Trucks - Electric	7°/12%
Platform (Skid) Trucks - (Hand-Walker)	8°/14%
Platform (Skid) Trucks - (Electric-Walkie)	7°/12%
Fork Trucks - Electric Walkies	7°/12%
Fork Trucks - Electric Rider	8°/14%
Fork Trucks - Gas Rider	11°/19%

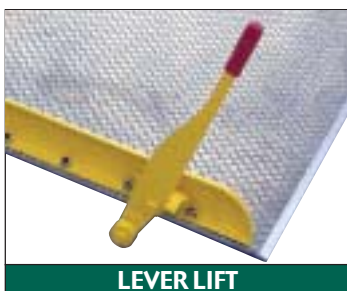
Ht. Diff. (Electric Fork Truck)	Ht. Diff. (Gas Fork Truck)	Length
8° / 14%	11° / 19%	
3"	4"	30"
4"	5"	36"
5"	6"	42"
5-1/2"	7"	48"
6"	8-1/2"	54"
7"	10"	60"
8"	11"	66"
8-1/2"	12"	72"
9"	13"	78"
10"	14"	84"

TRUCK DOCKBOARD ACCESSORIES



LIFTING CHAINS

Now boards can be quickly and easily moved with a forklift. Heavy duty chains lock onto dockboard curbs with rugged steel hooks and locked by screw and knob type locking pad. Removes in seconds. **Suffix - BLC**



LEVER LIFT

Manual lever lift raises the dockboard off the floor for easy forklift truck positioning. Lever falls to rest automatically when board is lifted. Standard on steel dockboards, series BTS. **Suffix - BALL**



SLIDING SPAN LOCKS

Rugged steel span locks secure dockboard in place when the span between the dock and vehicle is greater than the understructure stops. The 11-1/2" long lock eliminates slipping or sliding. **Suffix - BSSL**



WHEEL & HANDLE KIT

Now, easily roll your dockboard to the dock area. Tip and turn the dockboard on to wheels for total maneuverability. Steering handles assist with lifting and steering.

Suffix - BWHDL

Beacon Industries, Inc.

12300 Old Tesson Rd.

St. Louis, MO 63128-2247 USA

Phone: (314) 487-7600 Fax: (314) 487-0100

beacontechnology.com

E-Mail: sales@beacontechnology.com