

# PROTECTIVE BARRIERS

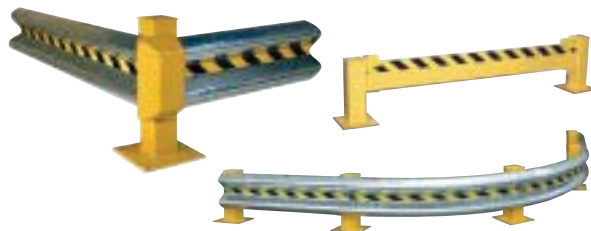
## PROTECTIVE BARRIERS

FOR PEOPLE AND PROPERTY

### APPLICATIONS

- ◆ Inner Plant Offices
- ◆ Shipping & Receiving Areas
- ◆ Aisle Ways
- ◆ Personnel Protection
- ◆ Parking Lots
- ◆ Racks & Shelves
- ◆ Specialty Machinery
- ◆ Mezzanines
- ◆ Recreation Areas
- ◆ Mezzanines

### GUARD RAIL SYSTEMS



### SAFETY BOLLARDS



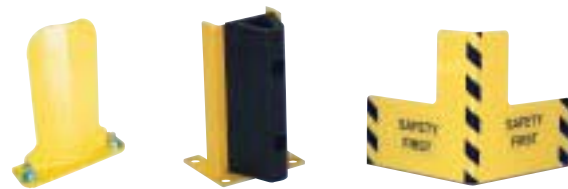
### MACHINERY & RACK GUARDS



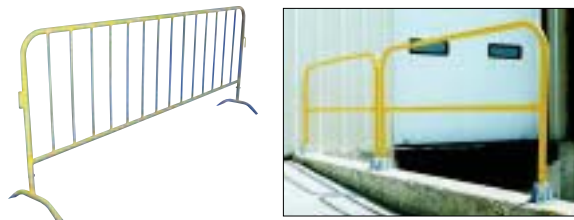
### COLUMN & PIPE PROTECTORS



### RACK GUARDS



### SAFETY RAILING



### GUIDANCE BARRIERS / GATES / MISC.



**Beacon Industries, Inc.**  
12300 Old Tesson Rd.  
St. Louis, MO 63128-2247 USA  
Phone: (314) 487-7600 Fax: (314) 487-0100  
[beacontechnology.com](http://beacontechnology.com)  
E-Mail: [sales@beacontechnology.com](mailto:sales@beacontechnology.com)

# SAFETY RAILING

## HANDRAIL SYSTEMS

DESIGNED TO MEET OSHA & ANSI STANDARDS!



POWDER COATED TOUGH

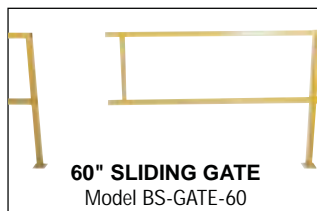
An economical way to protect people and machinery. Applications include loading docks, floor openings, walkways, and mezzanines. Highly visible safety yellow powder coat finish. Available with or without toeboards as application requires.



**BUMPER • 72"L x 10"H**  
Model BM-BUMP  
(hardware included)



**CORNER CONNECTOR**  
Model BC-CON



**60" SLIDING GATE**  
Model BS-GATE-60



**(4) ANCHOR BOLTS**  
Model BVDKR-KIT

### RIGID SECTION WITHOUT TOEBOARD

MODEL	OVERALL LENGTH	OVERALL HEIGHT	TUBING O.D.
BSQ-48	48"	42"	1-3/4"
BSQ-72	72"	42"	1-3/4"
BSQ-96	96"	42"	1-3/4"
BSQ-120	120"	42"	1-3/4"

### RIGID SECTION WITH TOEBOARD

MODEL	OVERALL LENGTH	OVERALL HEIGHT	TUBING O.D.
BSQ-48-TB	48"	42"	1-3/4"
BSQ-72-TB	72"	42"	1-3/4"
BSQ-96-TB	96"	42"	1-3/4"
BSQ-120-TB	120"	42"	1-3/4"



### WIRE MESH FOR HANDRAIL

MODEL	OVERALL LENGTH	OVERALL HEIGHT	WEIGHT (POUNDS)
BWM-48	48"	22"	18
BWM-72	72"	22"	28
BWM-96	96"	22"	36
BWM-120	120"	22"	43



### CONNECTION SECTION TUBING

MODEL	OVERALL LENGTH	TUBING O.D.	WEIGHT (POUNDS)
BCESC-48	48"	1-1/2"	14/Pair
BCESC-72	72"	1-1/2"	18/Pair
BCESC-96	96"	1-1/2"	22/Pair
BCESC-120	120"	1-1/2"	25/Pair

## ADJUSTABLE STEEL SAFETY RAILING



The Adjustable Steel Safety Railing can be used to create walking paths or as a sliding gate for continuous run handrail systems. 1-3/4" O.D. square tubing is painted safety yellow for high visibility. Unit stands 42" high and has a 21" mid rail. Optional 96" long toe board is available. Retracted length is 96" and extended length is 168".

MODEL	DESCRIPTION	SERVICE RANGE	WEIGHT
BASR-96	No Toeboard Included	96" to 168"	54 lbs.
BASR-96-4-TB	Includes 4"H x 96"L Toeboard	96" to 168"	61 lbs.

SERIES BSQ

SERIES BASR