

PROTECTIVE BARRIERS

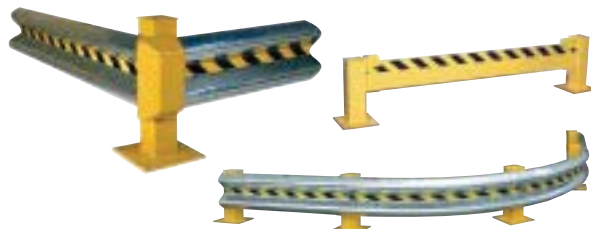
PROTECTIVE BARRIERS

FOR PEOPLE AND PROPERTY

APPLICATIONS

- ◆ Inner Plant Offices
- ◆ Shipping & Receiving Areas
- ◆ Aisle Ways
- ◆ Personnel Protection
- ◆ Parking Lots
- ◆ Racks & Shelves
- ◆ Specialty Machinery
- ◆ Mezzanines
- ◆ Recreation Areas
- ◆ Mezzanines

GUARD RAIL SYSTEMS



SAFETY BOLLARDS



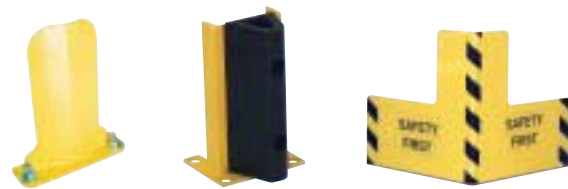
MACHINERY & RACK GUARDS



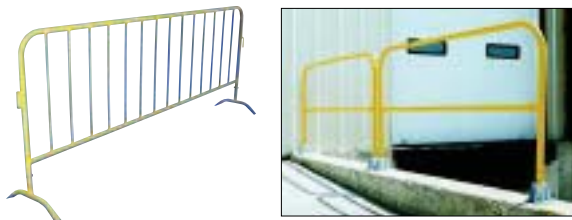
COLUMN & PIPE PROTECTORS



RACK GUARDS



SAFETY RAILING



GUIDANCE BARRIERS / GATES / MISC.



Beacon Industries, Inc.
12300 Old Tesson Rd.
St. Louis, MO 63128-2247 USA
Phone: (314) 487-7600 Fax: (314) 487-0100
beacontechnology.com
E-Mail: sales@beacontechnology.com

PROTECTIVE BARRIERS
RACK GUARDS

SERIES BNPG

LOW PROFILE RACK GUARDS



2 MOUNTING HOLES



Optional Mounting Kit
 Model BNPG-ABK

Protect pallet racking and wall corners against damage from fork trucks, pallet trucks and carts with Low Profile Rack Guards. Laser cut components. Quick and easy two-hole installation. High quality safety yellow powder coat finish. Mounting kit available.

LOW PROFILE RACK GUARDS			
MODEL	USABLE OPENING SIZE (W x D)	BASE SIZE (W x D)	OVERALL HEIGHT
BNPG4-12	4-1/4" x 1"	8" x 3"	12"
BNPG4-18	4-1/4" x 1"	8" x 3"	18"
BNPG4-24	4-1/4" x 1"	8" x 3"	24"
BNPG4-36	4-1/4" x 1"	8" x 3"	36"
BNPG6-12	6-1/4" x 1"	10" x 3"	12"
BNPG6-18	6-1/4" x 1"	10" x 3"	18"
BNPG6-24	6-1/4" x 1"	10" x 3"	24"
BNPG6-36	6-1/4" x 1"	10" x 3"	36"
BNPG-ABK	Mounting Kit (2) 3/4" x 4" Anchor Bolts		

SERIES BG & BGB

STRUCTURAL RACK GUARDS



4 MOUNTING HOLES



Model BG6-12



Model BG6-12-B



Optional Mounting Kit
 Model BG-ABK & BGB-ABK

Economical way to protect against damage to pallet racking and wall corners. Constructed of 6" or 8" structural steel "C" channel. Available with or without a rubber bumper. Easy to install to concrete surface. Four mounting holes for maximum stability. Safety yellow powder coat finish.

STRUCTURAL RACK GUARDS			
MODEL	USABLE OPENING SIZE (W x D)	BASE SIZE (W x D)	OVERALL HEIGHT
BG6-12	4-1/2" x 4"	7-5/8" x 6"	12"
BG6-18	4-1/2" x 4"	7-5/8" x 6"	18"
BG6-24	4-1/2" x 4"	7-5/8" x 6"	24"
BG6-36	4-1/2" x 4"	7-5/8" x 6"	36"
BG8-12	6-1/2" x 4"	9-5/8" x 6"	12"
BG8-18	6-1/2" x 4"	9-5/8" x 6"	18"
BG8-24	6-1/2" x 4"	9-5/8" x 6"	24"
BG8-36	6-1/2" x 4"	9-5/8" x 6"	36"
BG-ABK	Mounting Kit (4) 3/4" x 4" Anchor Bolts		

STRUCTURAL RACK GUARDS WITH RUBBER BUMPER			
MODEL	USABLE OPENING SIZE (W x D)	BASE SIZE (W x D)	OVERALL HEIGHT
BG6-12-B	4-1/2" x 4"	7-5/8" x 6"	12"
BG6-18-B	4-1/2" x 4"	7-5/8" x 6"	18"
BG6-24-B	4-1/2" x 4"	7-5/8" x 6"	24"
BG6-36-B	4-1/2" x 4"	7-5/8" x 6"	36"
BG8-12-B	6-1/2" x 4"	9-5/8" x 6"	12"
BG8-18-B	6-1/2" x 4"	9-5/8" x 6"	18"
BG8-24-B	6-1/2" x 4"	9-5/8" x 6"	24"
BG8-36-B	6-1/2" x 4"	9-5/8" x 6"	36"
BGB-ABK	Mounting Kit (4) 3/4" x 4" Anchor Bolts		