

PROTECTIVE BARRIERS

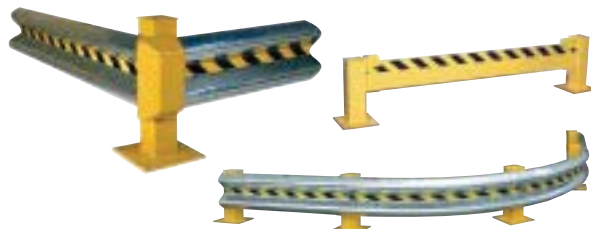
PROTECTIVE BARRIERS

FOR PEOPLE AND PROPERTY

APPLICATIONS

- ◆ Inner Plant Offices
- ◆ Shipping & Receiving Areas
- ◆ Aisle Ways
- ◆ Personnel Protection
- ◆ Parking Lots
- ◆ Racks & Shelves
- ◆ Specialty Machinery
- ◆ Mezzanines
- ◆ Recreation Areas
- ◆ Mezzanines

GUARD RAIL SYSTEMS



SAFETY BOLLARDS



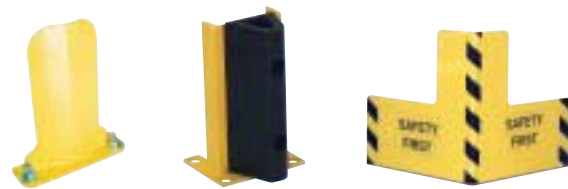
MACHINERY & RACK GUARDS



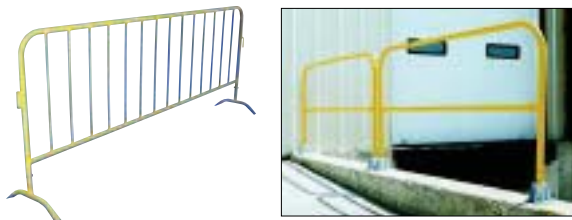
COLUMN & PIPE PROTECTORS



RACK GUARDS



SAFETY RAILING



GUIDANCE BARRIERS / GATES / MISC.



Beacon Industries, Inc.
12300 Old Tesson Rd.
St. Louis, MO 63128-2247 USA
Phone: (314) 487-7600 Fax: (314) 487-0100
beacontechnology.com
E-Mail: sales@beacontechnology.com

STRUCTURAL GUARDS

An economical way to protect against damage to structural columns and plant equipment from fork trucks, pallet trucks and other mobile equipment. Highly visible safety yellow finish. Many configurations to choose from. Mounting hardware kits available.

APPLICATIONS

- ◆ Support Columns
- ◆ Parking Lot Signs
- ◆ Light Posts
- ◆ Parking Garages
- ◆ Fixed Jibs & Gantries
- ◆ Shipping and Receiving Areas

COLUMN SHIELD

Custom Fit To Unlimited Number of Applications

- Designed for quick and easy assembly
- Heavy-duty steel construction
- Safety yellow powder coat finish

Modular guard can easily adjust to most applications. Railing sections are installed and secured to each post with a single bolt. Select from different railing lengths to custom fit your application. Railing systems are made from heavy-duty 3" square steel tubing. Wall mounting posts may be used to secure guard assembly to a wall.



Individual Components are Installed On-Sight



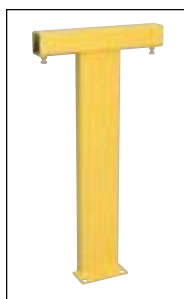
MODULAR GUARD with Wall Mount Posts



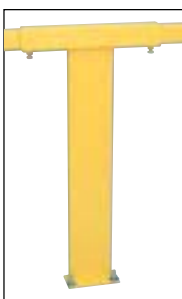
MODULAR GUARD provides wrap around protection



CORNER POST
36" high - dual rail
Model BMG-CP-36-2



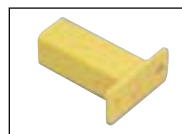
STRAIGHT POST
36" high
Series BMG-SP



STRAIGHT POST WITH RAIL
Series BMG-SP



RAILING SECTION
Series BMG-R



WALL MOUNTING POST
Series BMG-WP

SERIES BMG

MODEL	DESCRIPTION	EFFECTIVE LENGTH	OVERALL LENGTH
BMG-R-4	Railing Section, 3" square tubing	48"	56"
BMG-R-6	Railing Section, 3" square tubing	72"	80"
BMG-R-8	Railing Section, 3" square tubing	96"	102"
BMG-R-10	Railing Section, 3" square tubing	120"	128"
BMG-R-12	Railing Section, 3" square tubing	144"	152"
BMG-CP-36-1	Corner Post, Single Rail, 36" high		
BMG-CP-36-2	Corner Post, Dual Rail, 36" high		
BMG-SP-36-1	Straight Post, Single Rail, 36" high		
BMG-SP-36-2	Straight Post, Dual Rail, 36" high		
BMG-WP-A	Wall Mounting Post - Post Tubing		8"
BMG-WP-B	Wall Mounting Post - Railing Section Tubing		8"
BMG-KIT	Concrete Mounting Kit (includes two anchors)		--