

# BM5 Series

## MECHANICAL LOADING LEVELER

### 25,000, 30,000, 35,000, 40,000, 45,000 & 50,000 lb. CAPACITIES



#### ARCHITECTURAL SPECIFICATIONS

##### GENERAL

The BM5 Series pit mounted Mechanical Loading Leveler designed for truck service, available as a top of the line heavy duty unit. BM5 Series - Two movement with 16" hinged flip lip.

##### DESCRIPTION

Adjustable mechanical loading leveler with two movements: (1) Up, (2) down. Dock leveler to be \_\_\_\_\_ ft. long x \_\_\_\_\_ ft. wide with a static capacity of \_\_\_\_\_ lbs. Platform to be constructed of floor plate reinforced by C channel deck support beams. 16 in. hinged flip lip to be activated mechanically when deck comes up. 24" Total vertical travel, 12" above floor level

and 12" below floor level. Deck will compensate a maximum of 4" from side to side to service unlevel vehicles. Dock leveler is constructed of 55,000 lb. minimum yield steel tread plate. Dock leveler to be equipped with full operating range toe guards and a set of dock bumpers. Dock leveler to meet or exceed the performance requirements of C S202-56., OSHA and ANSI MH14.1-1984.

##### DIMENSIONS

NOTE: The sizes below are nominal lengths.

MODEL	CAP.(LBS.)	WIDTH	LENGTH	DEPTH	THICKNESS		WEIGHT
					LIP	DECK	
BM56625	25,000	72"	6'	19"	1/2"	1/4"	1,370
BM56625.5	25,000	78"	6'	19"	1/2"	1/4"	1,750
BM57625	25,000	83"	6'	19"	1/2"	1/4"	1,510
BM56825	25,000	72"	8'	19"	1/2"	1/4"	1,655
BM56825.5	25,000	78"	8'	19"	1/2"	1/4"	2,020
BM57825	25,000	83"	8'	19"	1/2"	1/4"	1,810
BM561025	25,000	72"	10'	24"	1/2"	1/4"	1,944
BM561025.5	25,000	78"	10'	24"	1/2"	1/4"	2,498
BM571025	25,000	83"	10'	24"	1/2"	1/4"	2,675
BM56630	30,000	72"	6'	19"	1/2"	1/4"	1,340
BM56630.5	30,000	78"	6'	19"	1/2"	1/4"	1,790
BM57630	30,000	83"	6'	19"	1/2"	1/4"	1,840
BM56830	30,000	72"	8'	19"	1/2"	1/4"	1,580
BM56830.5	30,000	78"	8'	19"	1/2"	1/4"	2,225
BM57830	30,000	83"	8'	19"	1/2"	1/4"	2,264
BM561030	30,000	72"	10'	24"	1/2"	1/4"	2,228
BM561030.5	30,000	78"	10'	24"	1/2"	1/4"	2,650
BM571030	30,000	83"	10'	24"	1/2"	1/4"	2,703
BM56635	35,000	72"	6'	19"	5/8"	1/4"	1,380
BM56635.5	35,000	78"	6'	19"	5/8"	1/4"	1,795
BM57635	35,000	83"	6'	19"	5/8"	1/4"	1,854
BM56835	35,000	72"	8'	19"	5/8"	1/4"	1,695
BM56835.5	35,000	78"	8'	19"	5/8"	1/4"	2,225
BM57835	35,000	83"	8'	19"	5/8"	1/4"	2,289
BM561035	35,000	72"	10'	24"	5/8"	1/4"	2,455
BM561035.5	35,000	78"	10'	24"	5/8"	1/4"	2,690
BM571035	35,000	83"	10'	24"	5/8"	1/4"	2,739
BM56645	45,000	72"	6'	19"	5/8"	1/4"	1,734
BM56645.5	45,000	78"	6'	19"	5/8"	1/4"	1,860
BM57645	45,000	83"	6'	19"	5/8"	1/4"	1,913
BM56845	45,000	72"	8'	19"	5/8"	1/4"	2,112
BM56845.5	45,000	78"	8'	19"	5/8"	1/4"	2,290
BM57845	45,000	83"	8'	19"	5/8"	1/4"	2,350
BM561045	45,000	72"	10'	24"	5/8"	1/4"	2,505
BM561045.5	45,000	78"	10'	24"	5/8"	1/4"	2,750
BM571045	45,000	83"	10'	24"	5/8"	1/4"	2,802

Additional capacities and 6'6" wide models available, consult factory.

##### SCOPE

This specification describes a mechanically operated, adjustable manual loading leveler, to be installed in a pit and/or affixed to loading platforms and to compensate for uneven heights between the truck bed and the dock.

##### OPERATION

The Beacon BM5 mechanical loading leveler is simple to operate and is activated by pull chain release, fully mechanical. Direct extension spring counter balance has no moving parts and is powered by exclusive direct extension spring method. The lip will extend automatically when the dock ramp is activated. Simply walk the unit down, the unit will rest on the truck bed. The yieldable lip allows the lip to close quietly, automatically and yield upon impact. To retract legs for below dock service, pull up on the chain assembly in front center of deck and walk the unit down to the level that is needed.

##### CONSTRUCTION

The capacities of the BM5 are available in 25,000, 30,000, 35,000, 40,000, 45,000, & 50,000 lb. Structural C channel deck support beams are 100% welded to the back of the header plate; 6 each under 6' wide models and 8 each under 7' wide models. Deck shall be 1/4" on all models. Lip shall be 1/2" or 5/8" (see chart capacities). Lip Hinge and Deck assembly shall be seamless tubing with a cold roll 1045 steel rod. Deck and Lip shall be 55,000 minimum yield steel tread plate. Hydra Lip assist with 1 shock absorber is standard. Grease fittings on lip hinges are standard. All levelers include fork entry slots and lifting holes in the side plates for ease of handling during shipping and installation.

##### SAFETY EQUIPMENT

**RAMP SIDES:** The sides of the ramp shall be provided with full range steel safety toe guards. The Beacon lip keepers are installed for your protection while in storage, at installation and for night security along with providing safe and secure cross traffic support. Dual safety legs provide metered below dock control points. A maintenance strut is provided with each leveler. Two 4 1/2" x 10" x 12" laminated dock bumpers shall be supplied with each dock leveler.

##### OPTIONAL FEATURES

- Weather Seals.
- 16" Above dock service range (10' models only).
- Below Dock Control (lip push out device).
- Base Frame Deep Pit Anchor Kit (4" channel for 23" deep pit) welded at factory.
- Foam insulation.
- Abrasive Surface.
- Self-forming pan with bottom (leveler welded in).
- EZ Pan (Self-forming) assembled at job site.
- Pit Curb Angle Kit.
- Yellow & Black Diagonal Striping on Sides.

##### PAINT

Beacon Grey

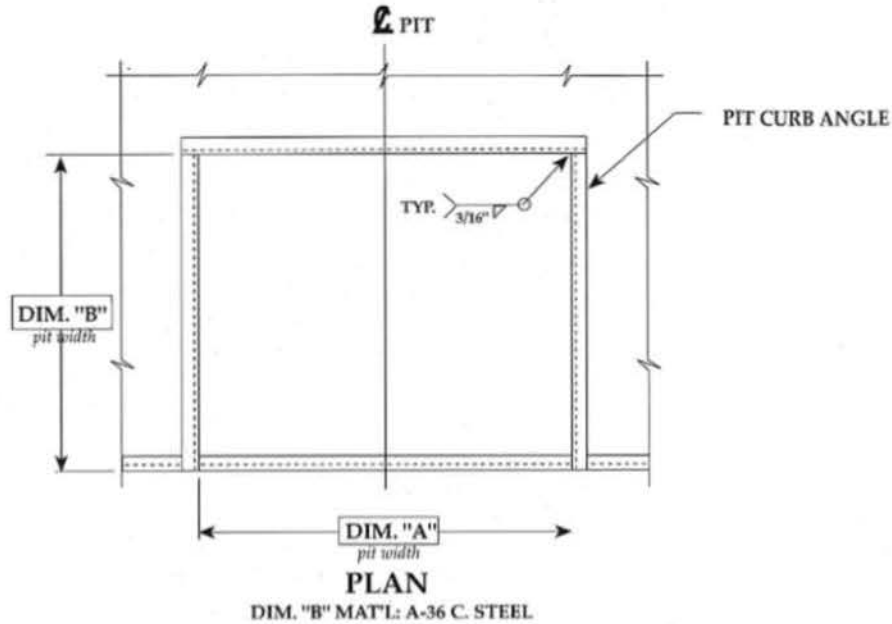
##### OWNERS MANUAL

Owners Manual comes with each unit, including General Information, Pit preparation, Leveler preparation, Anchoring Instructions, Operating Instructions, Troubleshooting, Parts List.

##### LIMITED WARRANTY

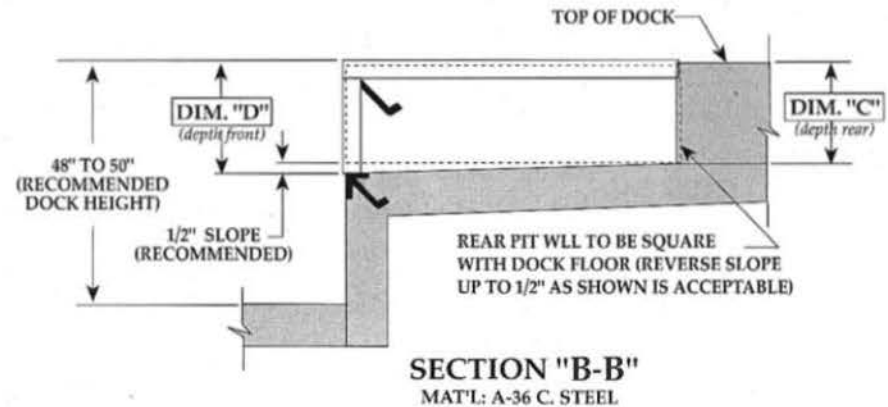
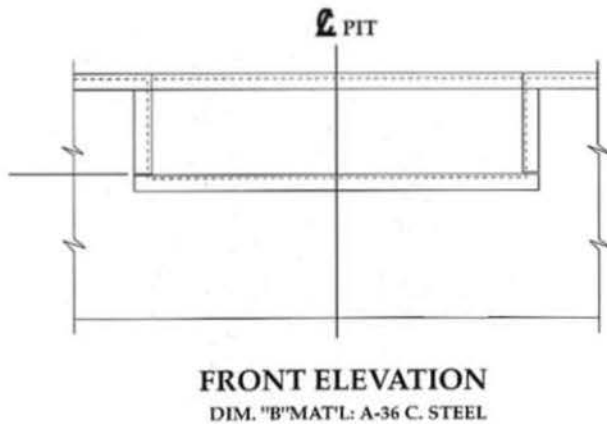
The BM5 Series comes with a Limited Warranty - 5 years on structural members, 4 years on main springs, 1 year on mechanical and miscellaneous parts.

# BEACON BM5 Series Mechanical Dock Leveler Pit Detail



VARIABLE DIMENSIONS				
MODEL SIZE	"A"	"B"	"C"	"D"
6'W x 6'L	74"	63"	19½"	20"
6'W x 8'L	74"	87"	19½"	20"
6'-6"W x 6'L	80"	63"	19½"	20"
6'-6"W x 8'L	80"	87"	19½"	20"
7'W x 6'L	85"	63"	19½"	20"
7'W x 8'L	85"	87"	19½"	20"
6'W x 10'L	74"	111"	23½"	24"
6'-6"W x 10'L	80"	111"	23½"	24"
7'W x 10'L	85"	111"	23½"	24"

INSERT SPECIFIC JOB DIMENSIONS FROM CHART



NOT TO SCALE

## NOTES

## JOB

DRAWN:	SCALE:	DATE:	DRAWING NUMBER:
D.E.A.	AS NOTED	9/30/94	PMI-2012-R1

TOLERANCES:		
Inch Dimension =	Decimal Dimension =	Angles =
± 1/16"	± .005	± 1°