

BM1 Series

Truck Service

MECHANICAL DOCK LEVELER 25,000, 30,000 & 35,000 lb.
Loading Docks

Beacon Industries, inc.
12300 Old Tesson Rd.
St. Louis, MO 63128-2247 USA
Phone: (314) 487-7600 Fax: (314) 487-0100
www.beacontechnology.com
E-Mail: sales@beacontechnology.com



ARCHITECTURAL SPECIFICATIONS

GENERAL

The BM1 Series pit mounted Loading Docks are available in one contractor economical style.
BM1 Series - Two movement with 16" hinged flip lip.

DESCRIPTION

Adjustable Loading Docks with two movements:
(1) Up, (2) down. Dock leveler to be _____ ft. long x _____ ft. wide with a static capacity of _____ lbs. Platform to be constructed of floor plate reinforced by full length deck support beams. 16 in. hinged flip lip to be activated mechanically when deck comes up. 24" total Vertical travel, 12" above floor level and 12" Below floor level. Dock leveler is constructed of 55,000 lb. minimum yield steel tread plate. Dock leveler to be equipped with toe guards and a set of dock bumpers. Dock leveler to meet or exceed the performance requirements of CS202-56., OSHA and ANSI MH14.1-1984.

SCOPE

This specification describes a manual operated, adjustable mechanical dock leveler, to be installed in a pit and/or affixed to loading platforms and to compensate for uneven heights between the truck bed and the dock.

DIMENSIONS

NOTE: The sizes below are nominal lengths.

OPERATION

The Beacon BM1 Loading Docks is easy to operate, engaged and activated by pulling the chain release mechanism at the rear of the leveler. The lip will extend and lock in position automatically. To unlock the leveler, simply walk the unit down, the unit will rest on the truck bed and the lock will automatically release. To retract legs for below dock service, pull up on the chain assembly in front center of deck and walk the unit down to the level that is needed.

CONSTRUCTION

The BM1 series leveler is available in 25,000, 30,000 and 35,000 lb. capacities. The direct extension spring counter balance has no moving parts. Integral deck support beams are 100% welded to the back of the header plate. Deck shall be 1/4" on all units. Lip shall be 7/16" thick on 25,000 and 30,000 capacities and 1/2" on 35,000 lb. capacities. Lip Hinge shall be 1/4" wall seamless tubing and 1" cold roll 1045 steel rod. Deck and Lip shall be 55,000 minimum yield steel tread plate. Grease fittings on lip hinges are standard. All levelers include fork entry slots and lifting holes in the side plates for ease of handling during shipping and installation.

SAFETY EQUIPMENT

RAMP SIDES: The sides of the ramp shall be provided with steel safety toe guards. The Beacon lip keepers are installed for your protection while in storage, at installation and for night security along with providing safe and secure cross traffic support. Dual safety legs provide metered below dock control points at 1" and 8". A maintenance strut is provided with each leveler. Two 4" x 10" x 13" molded dock bumpers shall be supplied with each dock leveler.

PAINT

Beacon Grey

OWNERS MANUAL

Owners Manual comes with each unit, including General Information, Pit preparation, Leveler preparation, Anchoring Instructions, Operating Instructions, Troubleshooting, Parts List.

OPTIONAL FEATURES

- Full Range Toe Guards.
- Weather Seals.
- Below Dock Control (lip push-out device).
- Base Frame Deep Pit Anchor Kit (4" channel for 23" deep pit) welded at factory.
- Foam insulation.
- Abrasive Surface.
- Self-forming pan with bottom (leveler welded in).
- EZ Pan (Self-forming) assembled at job site.
- Pit Curb Angle Kit.
- Yellow & Black Diagonal Striping on Sides.

WARRANTY

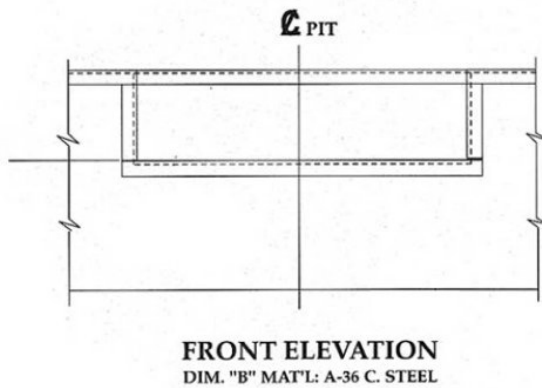
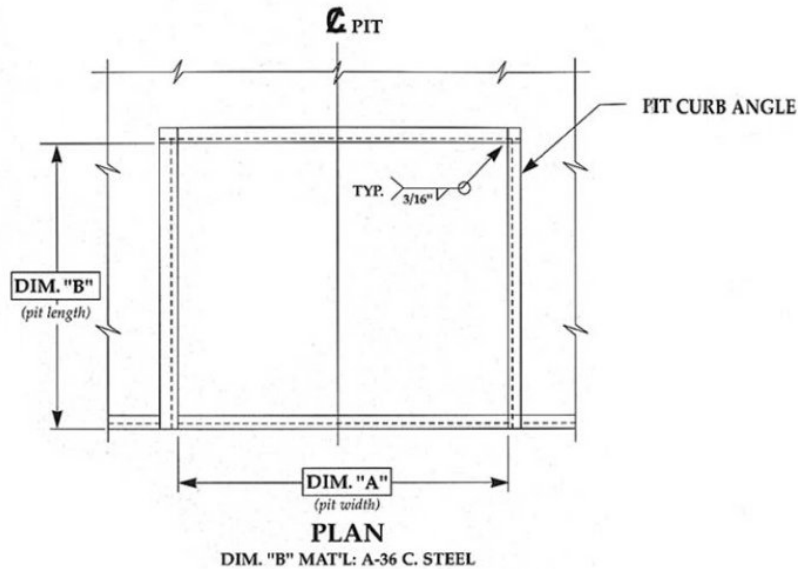
The BM1 Series comes with a Limited Warranty - 1 year on structural members and main springs, 1 year on mechanical and miscellaneous parts.

MODEL	CAPACITY	SIZE WIDTH	NOMINAL LENGTH	DEPTH	THICKNESS LIP	DECK	WEIGHT
BM16625	25000	72"	6'	19"	7/16"	1/4"	1252
BM16825	25000	72"	8'	19"	7/16"	1/4"	1472
BM17625	25000	83"	6'	19"	7/16"	1/4"	1378
BM17825	25000	83"	8'	19"	7/16"	1/4"	1678
BM16630	30000	72"	6'	19"	7/16"	1/4"	1292
BM16830	30000	72"	8'	19"	7/16"	1/4"	1592
BM17630	30000	83"	6'	19"	7/16"	1/4"	1428
BM17830	30000	83"	8'	19"	7/16"	1/4"	1728
BM16635	35000	72"	6'	19"	1/2"	1/4"	1310
BM16835	35000	72"	8'	19"	1/2"	1/4"	1610
BM17635	35000	83"	6'	19"	1/2"	1/4"	1465
BM17835	35000	83"	8'	19"	1/2"	1/4"	1750

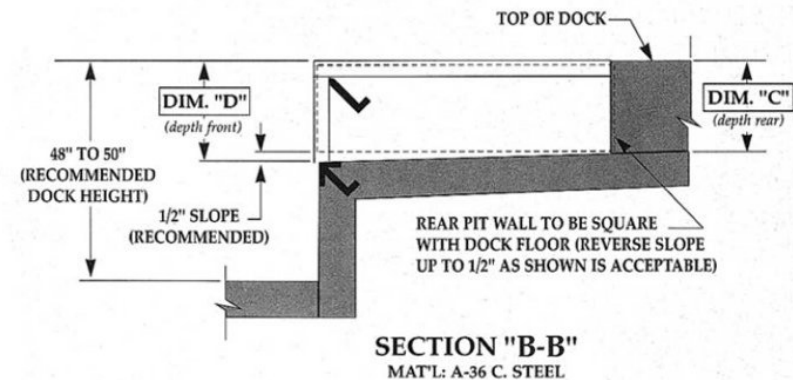
Additional models and capacities available, consult factory

BEACON

BEACON BM1 Series Loading Docks



VARIABLE DIMENSIONS				
MODEL SIZE	"A"	"B"	"C"	"D"
6'W X 6'L	74"	63"	19½"	20"
6'W X 8'L	74"	87"	19½"	20"
7'W X 6'L	85"	63"	19½"	20"
7'W X 8'L	85"	87"	19½"	20"
INSERT SPECIFIC JOB DIMENSIONS FROM CHART				



NOTES

JOB

DRAWN:	SCALE:	DATE:	DRAWING NUMBER:
D.E.A.	AS NOTED	5-15-96	PMI-2010

TOLERANCES:		
Inch Dimension = ± 1/16"	Decimal Dimension = ± .005	Angles = ± 1°

NOT TO SCALE

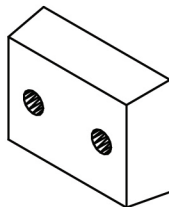


Model: 9243

BM1-Series

BH2-Series

Model: 9243 Molded Bumper



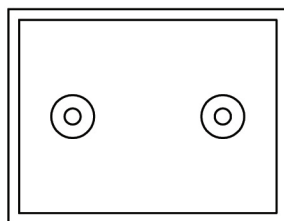
Size:

Overall Length	13
Overall Thickness	4
- Height	10
- Anchor Holes	7
Total Weight	17 lbs

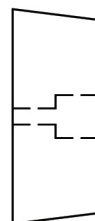
Date: 8-3-99

Scale: Full

Please Note: Weights are calculated and are not actual and overall tolerance may vary + or - 1/4".



FRONT VIEW



SIDE VIEW

