

DRUM HANDLING EQUIPMENT

For Steel, Fiber and Plastic Drums



Beacon Industries, Inc.
12300 Old Tesson Rd.
St. Louis, MO 63128-2247 USA
Phone: (314) 487-7600 Fax: (314) 487-0100
E-Mail: sales@beacontechology.com
beacontechology.com

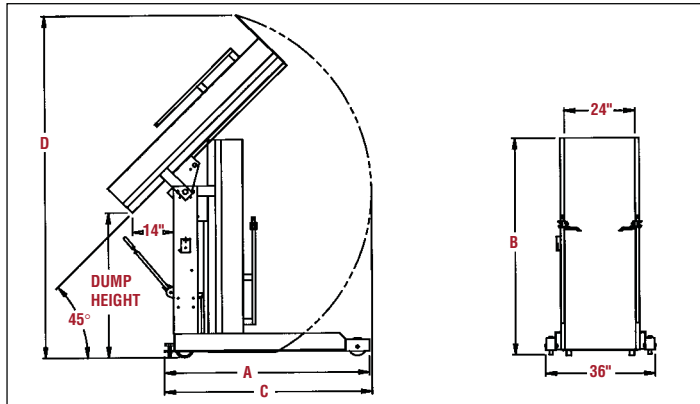
BARREL DUMPER

Series BHDD-S

The Hydraulic Barrel Dumper is what you need to dump drums that weight up to 1,500 lbs. Available in either a portable or stationary model. The BHDD has a solid steel chute (stainless steel chutes are available for special applications).

FEATURES

- 24V water resistant, hand held push-button control
- 56 frame, 3/4 HP motor
- Standard voltage is 10V/220V, 1-Phase, 60 Hz (other voltages available)
- Emergency brass safety velocity fuse in cylinder
- Upper travel limit switch
- Vertical adjustment drum restraints
- All steel construction



AVAILABLE OPTIONS

- 30 gallon drum adaptor
- Air/Hydraulic oil power unit
- 3-Phase power
- Stainless Steel Chute
- 12V DC power

COMPLETE TILTING TIME

- 750 lbs. capacity = 25 seconds
- 1,000 lbs. capacity = 25 seconds
- 1,500 lbs. capacity = 30 seconds

PORTABLE DRUM DUMPERS

Dump Height	Dim. "A"	Dim. "B"	Dim. "C"	Dim. "D"
36"	58-1/2"	60-3/4"	59-1/2"	93-1/2"
42"	64-1/4"	66-3/4"	64-1/2"	103-1/2"
48"	68-1/4"	72-3/4"	70-1/2"	114"
54"	76-3/4"	78-3/4"	76-1/2"	124"
60"	76-3/4"	84-3/4"	82-1/2"	134-1/2"
72"	89"	97"	91-1/4"	156"

STATIONARY DRUM DUMPERS

Dump Height	Dim. "A"	Dim. "B"	Dim. "C"	Dim. "D"
36"	53-5/8"	60-1/2"	58-1/2"	92"
42"	59-5/8"	66-1/2"	64-1/2"	100"
48"	63-5/8"	72-1/2"	70-1/2"	112-1/2"
54"	72-1/8"	78-1/2"	76-1/2"	122-1/2"
60"	72-1/8"	84-1/2"	82-1/2"	133"
72"	84-1/2"	96-3/8"	90-1/4"	153-1/4"



56 Frame Motor



Hand Held Pendant Control

DRUM RACKER

BHDC-450

The Drum Racker is perfect for positioning 55 gallon steel drums horizontally on shelves. The solid steel construction provides stability during transit. Unit rolls easily on (2) 8" x 2" phenolic casters and (2) 5" x 2" swivel polyurethane casters. Comes standard with hydraulic foot pump.

PORTABLE DRUM STACKER

Model Number	Rotation Method	Lift Height	Capacity (pounds)
BHDC-450-60	Hand Crank	60"	800
BHDC-450-72	Pull Chain	72"	800
BHDC-450-84	Pull Chain	84"	800
BHDC-450-96	Pull Chain	96"	800

Drum must be full to rotate at rated capacity.

STACKABLE DRUM RACKS

Model Number	Drum Capacity	Overall Size (W x D x H)	Capacity (pounds)
BDRUM-RACK-2	(1) 55 Gallon Steel Drum	45" x 30" x 25-1/2"	1,600
BDRUM-RACK-4	(2) 55 Gallon Steel Drum	71" x 30" x 25-1/2"	2,400



OPTIONS:

- AC Power Unit, 115V 1-Phase (lift only)
- DC Power Unit (lift only)
- FactorAir/Oil Unit (lift only)

Racks have two way forklift access, not recommended to be moved stacked more than 2 racks high. All steel construction with 1/4" formed steel drum cradles. Bolt together assembly. Works with the Drum Positioner on page 6.

