

BHD5 Series Truck Service

HEAVY CAPACITY DOCK LEVELER
50,000, 60,000 & 80,000 lb. CAPACITIES

Hydraulic Operation

ARCHITECTURAL SPECIFICATIONS

GENERAL

The BHD5 Series pit mounted hydraulic heavy capacity dock levelers are available in one heavy duty style.
BHD5 Series - Two movement with 16" hinged flip lip.

DESCRIPTION

Adjustable hydraulic heavy capacity dock leveler with two movements: (1) Up, (2) down. Dock leveler to be _____ ft. long x _____ ft. wide with a static capacity of _____ lbs. Platform to be constructed of floor plate reinforced by C channel deck support beams. Units are powered with a 1 HP, 1.0 GPM pump that activates the deck hydraulic cylinder. The deck and 16" hinged flip lip extends onto the vehicle when the start button is depressed. The BHD5 Leveler automatically recycles to stored cross traffic position when the vehicle departs or may be recycled with the vehicle at the dock. 24" total Vertical travel, 12" above floor level and 12" below floor level for 23½" dock leveler frames. Deck will compensate a maximum of 4" from side to side to service unlevel vehicles. Dock leveler is constructed of 55,000 lb. minimum yield steel treadplate. Dock leveler to be equipped with full operating range toe guards and a set of loading dock bumpers. Heavy capacity dock leveler to meet the performance requirements of OSHA & ANSI MH14.1-1984.

SCOPE

This specification describes a push button control hydraulic operated adjustable recycle dock leveler, to be installed in a pit and/or affixed to loading platforms and to compensate for uneven heights between the truck bed and dock.

DIMENSIONS

NOTE: The sizes below are nominal lengths.

MODEL	CAP. (LBS.)	WIDTH	DEPTH	NOMINAL	WEIGHT
BHD56650	50,000	72"	19"	6'	2,140
BHD56650.5	50,000	78"	19"	6'	2,371
BHD57650	50,000	83"	19"	6'	2,409
BHD56850	50,000	72"	19"	8'	2,633
BHD56850.5	50,000	78"	19"	8'	2,715
BHD57850	50,000	83"	19"	8'	2,845
BHD561050	50,000	72"	24"	10'	3,107
BHD561050.5	50,000	78"	24"	10'	3,433
BHD571050	50,000	83"	24"	10'	3,558
BHD56660	60,000	72"	19"	6'	2,350
BHD56660.5	60,000	78"	19"	6'	2,563
BHD57660	60,000	83"	19"	6'	2,604
BHD56860	60,000	72"	19"	8'	2,878
BHD56860.5	60,000	78"	19"	8'	3,016
BHD57860	60,000	83"	19"	8'	3,154
BHD561060	60,000	72"	24"	10'	3,369
BHD561060.5	60,000	78"	24"	10'	3,495
BHD571060	60,000	83"	24"	10'	3,608
BHD56680	80,000	72"	19"	6'	2,779
BHD56680.5	80,000	78"	19"	6'	2,907
BHD57680	80,000	83"	19"	6'	3,103
BHD56880	80,000	72"	19"	8'	3,278
BHD56880.5	80,000	78"	19"	8'	3,497
BHD57880	80,000	83"	19"	8'	3,600
BHD561080	80,000	72"	24"	10'	3,857
BHD561080.5	80,000	78"	24"	10'	4,087
BHD571080	80,000	83"	24"	10'	4,200



OPERATION

The Beacon BHD5 Hydraulic heavy capacity dock leveler is simple to operate featuring a wall mounted push button control with auto and manual rest. When raising the Beacon deck, you will find the deck and lip action fully automatic. When the Beacon deck is raised the lip automatically extends, the deck and lip descend to the floor of the truck trailer when the button is released.

The BHD5 Series automatically recycles when the trailer departs.

For below dock tailgate loading or unloading, turn the selector to below dock mode, when the deck is raised the lip clears the keepers and the unit descends to the bottom of the pit.

CONSTRUCTION

The capacities of the BHD5 are available in 50,000, 60,000 & 80,000 lb. Structural C channel deck support beams are 100% welded to the back of the ½" x 6" header plate on 50 & 60M, (5/8" x 6" on 80M); 6 each under 6' wide modes and 8 each under 7' wide models. Deck shall be ¼" thick on 50M cap and a 3/8" thick on 60, & 80M capacities. Lip shall be ¾" on 50 & 60M cap and 1" on 80M capacity. Lip hinge shall be 1 ¼" I.D. seamless tubing with a 1 1/8" cold roll 1045 steel rod for our 50 & 60,000 cap and 1 ½" I.D. seamless tubing with a 1 3/8" cold roll 1045 steel rod for our 80,000 cap. Deck and Lip shall be 55,000 minimum yield steel tread plate. All levelers include fork entry slots and lifting holes in the side plates for ease of handling during shipping and installation.

HYDRAULICS

1 GPM hydraulic pump. Hydraulic deck and lip with automatic return to dock. BHD5 is equipped with an in line safety valve to prevent leveler deck from free fall in case of premature trailer departure. Hydraulic lift cylinder is 4" diameter bore, the lip cylinder is 2" bore.

ELECTRICAL

The BHD5 series electric-hydraulic unit is complete with a 1 HP totally closed non-ventilated motor to be factory tested for 115 Vac or 230 Vac, 1 Ph, 60Hz: or 230 Vac or 460 Vac, 3 Ph, 60 Hz as specified. All functions will be controlled by proximity sensors and will be void of any solenoid valves, chain or cable operated valves including mercury or limit switches as specified. Unit includes a limit switch for the auto reset capability. All operations to be push button controlled from a single pre-wired NEMA 12 wall-mounted steel enclosure. All electrical hook-ups are by others.

Beacon Industries, inc.

12300 Old Tesson Rd.
St. Louis, MO 63128-2247 USA
Phone: (314) 487-7600 Fax: (314) 487-0100
www.beacontechnology.com
E-Mail: sales@beacontechnology.com

SAFETY EQUIPMENT

RAMP SIDES: The sides of the ramp shall be provided with full operating range steel safety toe guards. The Beacon lip keepers are installed for your protection while in storage for night security along with providing safe and secure cross traffic support. A safety velocity fuse prevents sudden fall while loading should the leveler become unsupported by the trailer. A maintenance strut is provided with each leveler. Two 6" x 10" x 12" laminated dock bumpers shall be supplied with each dock leveler.

OPTIONAL FEATURES

- Hot Dip Galvanize
- Weather Seals.
- Lip 18" (14" projection).
- Lip 20" (16" projection).
- Base Frame Deep Pit Anchor Kit (4" channel for 23" deep pit) welded at factory
- Emergency Stop Feature.
- Independent Lip Control.
- Foam insulation.
- Abrasive Surface.
- Self-forming pan with bottom (leveler welded in).
- EZ Pan (Self-forming) assembled at job site.
- Pit Curb Angle Kit.
- Yellow & Black Diagonal Striping on Sides.

PAINT

Beacon Grey

OWNERS MANUAL

Owners Manual comes with each unit, including General Information, Pit preparation, Leveler preparation, Anchoring Instructions, Wiring Diagram, Operating Instructions, Troubleshooting, Parts Listed.

WARRANTY

The BHD5 Series Heavy Capacity Dock Leveler comes with a Limited Warranty - 5 years on structural members, cylinders and proximity sensors, 1 year on motor/pump and miscellaneous parts.

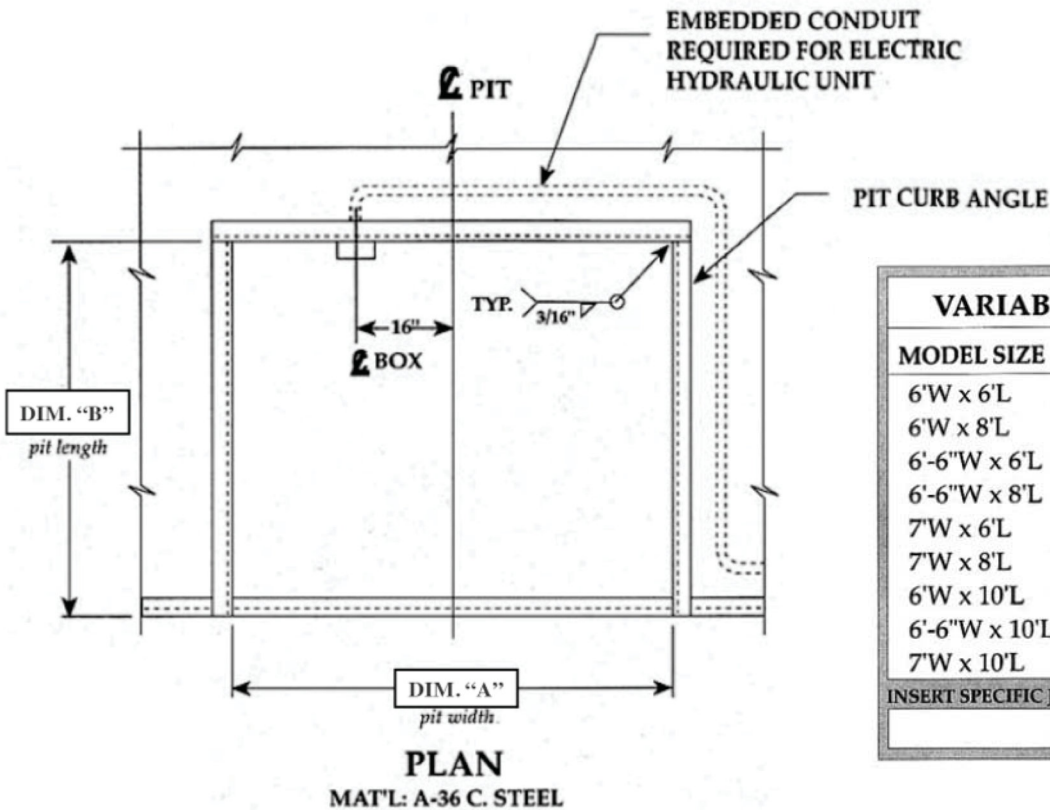
Special Warranty Note: Beacon will match any other company's warranty, just present to Beacon for written approval.

Heavier Capacity Units can be found
in the BEACON HEAVY DUTY
LOADING DOCK

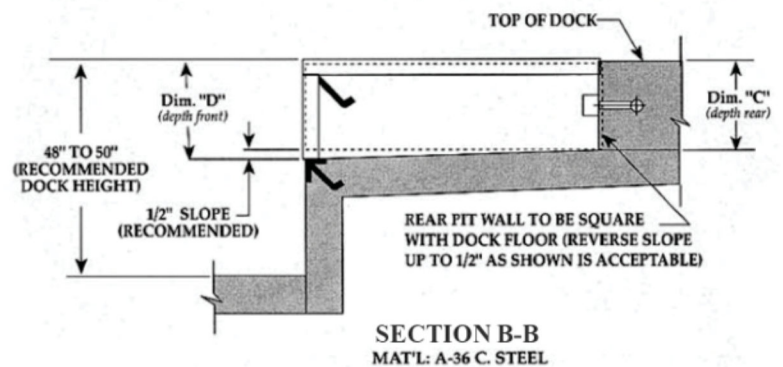
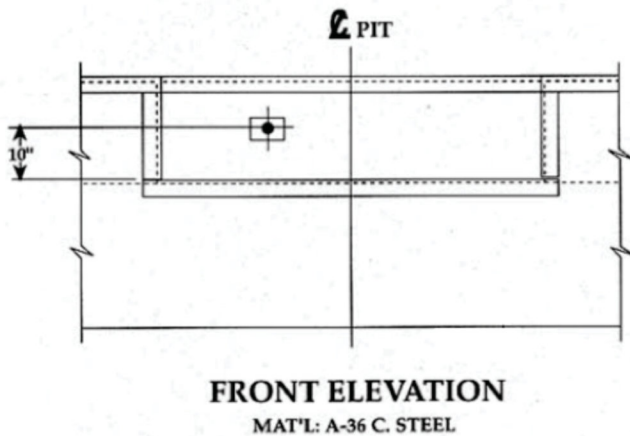
BEACON™ BUYERS GUIDE

BHD5 Series Hydraulic Heavy Capacity Dock Leveler

Pit Detail



VARIABLE DIMENSIONS				
MODEL SIZE	"A"	"B"	"C"	"D"
6'W x 6'L	74"	63"	19½"	20"
6'W x 8'L	74"	87"	19½"	20"
6'-6"W x 6'L	80"	63"	19½"	20"
6'-6"W x 8'L	80"	87"	19½"	20"
7'W x 6'L	85"	63"	19½"	20"
7'W x 8'L	85"	87"	19½"	20"
6'W x 10'L	74"	111"	23½"	24"
6'-6"W x 10'L	80"	111"	23½"	24"
7'W x 10'L	85"	111"	23½"	24"
INSERT SPECIFIC JOB DIMENSIONS FROM CHART				



Not To Scale

NOTES

JOB

DRAWN: J.M.G.	SCALE: AS NOTED	DATE: 1/30/95	DRAWING NUMBER: PMI-2014-R1
TOLERANCES: Inch Dimension = $\pm 1/16$ " Decimal Dimension = $\pm .005$ Angles = $\pm 1^\circ$			

BEACON INDUSTRIES, INC™

12300 Old Tesson Rd., St. Louis, MO 63128, USA

Ph: 314-487-7600 USA - Call Toll Free USA 800-454-7159 - Fax: 314-487-0100