

BH5 Series Truck Service

LOADING DOCK LEVELER 25,000, 30,000, 35,000, 40,000 & 45,000 lb. CAPACITIES

ARCHITECTURAL SPECIFICATIONS

GENERAL

The BH5 Series pit mounted Loading Dock Leveler is available in one heavy duty style. BH5 Series - Two movement with 16" hinged flip lip.

DESCRIPTION

Adjustable hydraulic loading leveler with two movements: (1) Up, (2) down. Dock leveler to be _____ ft. long x _____ ft. wide with a static capacity of _____ lbs. Platform to be constructed of floor plate rein-forced by C channel deck support beams. The units are powered with a 1 h.p., 1.3 GPM pump that activates the deck hydraulic cylinder. The deck and 16" hinged flip lip extends onto the vehicle when the start button is depressed. The BH5 Leveler automatically recycles to stored cross traffic position when the vehicle departs or may be recycled with the vehicle at the dock. 24" total Vertical travel, 12" above floor level and 12" below floor level. Deck will compensate a maximum of 4" from side to side to service vehicles. Dock leveler is constructed of 55,000 lb. minimum yield steel tread plate. Dock leveler to be equipped with full operating range toe guards and a set of dock bumpers. Dock leveler to meet or exceed the performance requirements of CS202-56., OSHA and ANSI MH14.1-1984.

DIMENSIONS

NOTE: The sizes below are nominal lengths.

MODEL	CAP. (LBS.)	WIDTH	DEPTH	NOMNAL LENGTH	WEIGHT
BH56625	25,000	72"	19"	6'	1,605
BH56625.5	25,000	78"	19"	6'	1,672
BH57625	25,000	83"	19"	6'	1,690
BH56825	25,000	72"	19"	8'	1,785
BH56825.5	25,000	78"	19"	8'	1,860
BH57825	25,000	83"	19"	8'	2,114
BH561025	25,000	72"	24"	10'	2,012
BH561025.5	25,000	78"	24"	10'	2,095
BH571025	25,000	83"	24"	10'	2,124
BH56630	30,000	72"	19"	6'	1,623
BH56630.5	30,000	78"	19"	6'	1,693
BH57630	30,000	83"	19"	6'	1,725
BH56830	30,000	72"	19"	8'	1,863
BH56830.5	30,000	78"	19"	8'	1,940
BH57830	30,000	83"	19"	8'	2,143
BH561030	30,000	72"	24"	10'	2,037
BH561030.5	30,000	78"	24"	10'	2,121
BH571030	30,000	83"	24"	10'	2,147
BH56635	35,000	72"	19"	6'	1,658
BH56635.5	35,000	78"	19"	6'	1,707
BH57635	35,000	83"	19"	6'	1,755
BH56835	35,000	72"	19"	8'	1,940
BH56835.5	35,000	78"	19"	8'	2,021
BH57835	35,000	83"	19"	8'	2,172
BH561035	35,000	72"	24"	10'	2,061
BH561035.5	35,000	78"	24"	10'	2,147
BH571035	35,000	83"	24"	10'	2,170
BH56640	40,000	72"	19"	6'	1,683
BH56640.5	40,000	78"	19"	6'	1,743
BH57640	40,000	83"	19"	6'	1,775
BH56840	40,000	72"	19"	8'	1,965
BH56840.5	40,000	78"	19"	8'	2,047
BH57840	40,000	83"	19"	8'	2,202
BH561040	40,000	72"	24"	10'	2,068
BH561040.5	40,000	78"	24"	10'	2,154
BH571040	40,000	83"	24"	10'	2,178
BH56645	45,000	72"	19"	6'	1,708
BH56645.5	45,000	78"	19"	6'	1,779
BH57645	45,000	83"	19"	6'	1,794
BH56845	45,000	72"	19"	8'	1,990
BH56845.5	45,000	78"	19"	8'	2,073
BH57845	45,000	83"	19"	8'	2,231
BH561045	45,000	72"	24"	10'	2,075
BH561045.5	45,000	78"	24"	10'	2,161
BH571045	45,000	83"	24"	10'	2,186



SCOPE

This specification describes a push button control hydraulic operated adjustable recycle dock leveler, to be installed in a pit and/or affixed to loading platforms and to compensate for uneven heights between the truck bed and dock.

OPERATION

The Beacon BH5 Loading Dock Leveler are simple to operate and are single remote controlled for all stages of operation. When raising the Beacon deck, you will find the deck and lip action fully automatic. When the Beacon deck is raised the lip automatically extends, the deck and lip descend to the floor of the truck trailer when the button is released. The BH5 Series automatically recycles when the trailer departs. For below dock tailgate loading or unloading, turn the selector to below dock mode, when the deck is raised the lip clears the keepers and the unit descends to the bottom of the pit.

CONSTRUCTION

The capacities of the BH5 are available in 25,000, 30,000, 35,000, 40,000 & 45,000 lb. Structural C channel deck support beams are 100% welded to the back of the 3/8" x 6" header plate, (1/2" x 6" on 35, 40 & 45M); 6 each under 6' wide models and 8 each under 7' wide models. Deck shall be 1/4" Thick, Lip shall be 1/2" Thick on our 25 & 30,000 lb. capacities and 5/8" on our 35, 40 & 45,000 lb. capacities. Lip Hinge and Deck assembly shall be 1/4" Wall seamless tubing with a 1" cold roll 1045 steel rod for our 25 & 30,000 capacities and 3/8" on our 35, 40 & 45,000 lb. capacities. Deck and Lip shall be 55,000 minimum yield steel tread plate. All levelers include fork entry slots and lifting holes in the side plates for ease of handling during shipping and installation.

HYDRAULICS

1 GPM hydraulic pump. Hydraulic deck and lip with automatic return to dock. BH5 is equipped with an in line safety valve to prevent leveler deck from free fall in case of premature trailer departure. Hydraulic lift cylinder is 3" diameter bore, the lip cylinder is 2" bore.

ELECTRICAL

The BH5 series electric-hydraulic unit is complete with a 1h.p. totally enclosed motor to be factory tested and wired for 115V or 230V, 1 PH. 60 HZ; or 230V or 460V, 3 PH. 60 HZ as specified. All functions will be controlled by proximity sensors and to be void of any solenoid valves, chain or cable operated valves including mercury or limit switches. All operations to be push button controlled from a single pre-wired NEMA 12 wall-mounted remote. All electrical hook-ups are by others.

Beacon Industries, inc.

12300 Old Tesson Rd.

St. Louis, MO 63128-2247 USA

Phone: (314) 487-7600 Fax: (314) 487-0100

www.beacontechnology.com

E-Mail: sales@beacontechnology.com

SAFETY EQUIPMENT

RAMP SIDES: The sides of the ramp shall be provided with full operating range steel safety toe guards. The Beacon lip keepers are installed for your protection while in storage, at installation and for night security along with providing safe and secure cross traffic support. An in-line safety stop prevents sudden fall while loading should the leveler become unsupported by the trailer. A maintenance strut is provided with each leveler. Two 4-1/2" x 10" x 12" Laminated Dock Bumpers shall be supplied with each dock leveler.

OPTIONAL FEATURES

- Hot Dip Galvanize.
- Weather Seals.
- Lip 18" (14" projection).
- Lip 20" (16" projection).
- Base Frame Deep Pit Anchor Kit (4" channel for 23" deep pit) welded at factory.
- Emergency Stop Feature.
- Independent Lip Control.
- Foam insulation.
- Abrasive Surface.
- Self-forming pan with bottom (leveler welded in).
- EZ Pan (Self-forming) assembled at job site.
- Pit Curb Angle Kit.
- Yellow & Black Diagonal Striping on Sides.

PAINT

Beacon Grey

OWNERS MANUAL

Owners Manual comes with each unit, including General Information, Pit preparation, Leveler preparation, Anchoring Instructions, Wiring Diagram, Operating Instructions, Troubleshooting, Parts Listed.

LIMITED WARRANTY

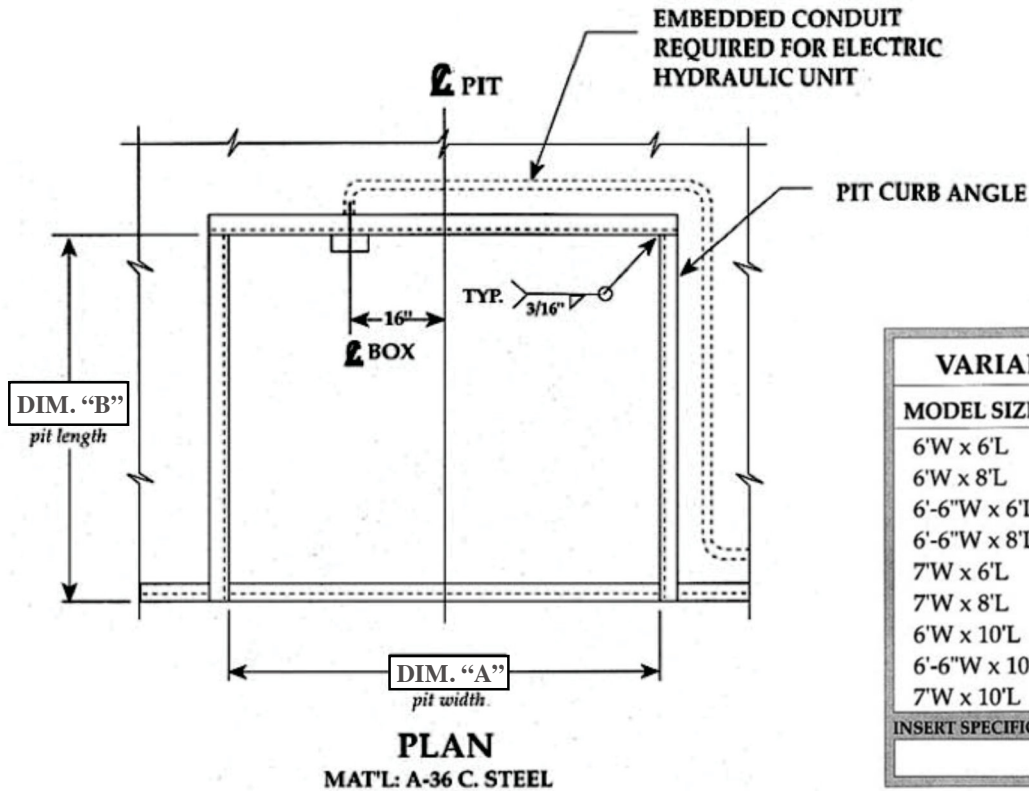
The BH5 Series Loading Dock Leveler comes with a Limited Warranty - 5 years on structural members, cylinders and proximity sensors, 1 year on motor/pump and miscellaneous parts.

Heavier Capacity Units can be found in the
BEACON HEAVY DUTY LOADING DOCK

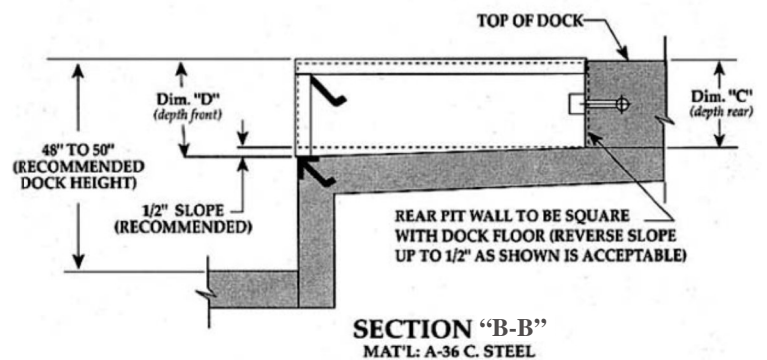
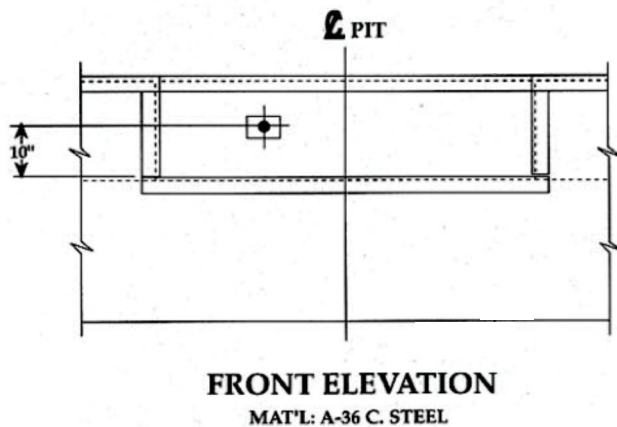
BEACON™ BUYERS GUIDE

BEACON BH5 Series Manual Loading Leveler

Pit Detail



VARIABLE DIMENSIONS				
MODEL SIZE	"A"	"B"	"C"	"D"
6'W x 6'L	74"	63"	19½"	20"
6'W x 8'L	74"	87"	19½"	20"
6'-6"W x 6'L	80"	63"	19½"	20"
6'-6"W x 8'L	80"	87"	19½"	20"
7'W x 6'L	85"	63"	19½"	20"
7'W x 8'L	85"	87"	19½"	20"
6'W x 10'L	74"	111"	23½"	24"
6'-6"W x 10'L	80"	111"	23½"	24"
7'W x 10'L	85"	111"	23½"	24"
INSERT SPECIFIC JOB DIMENSIONS FROM CHART				



Not To Scale

NOTES

JOB

DRAWN:	SCALE:	DATE:	DRAWING NUMBER:
J.M.G.	AS NOTED	1/30/95	PMI-2014 - R1
TOLERANCES:			
Inch Dimension =	Decimal Dimension =	Angles =	
±1/16"	±.005	±1°	

BEACON INDUSTRIES, INC™

12300 Old Tesson Rd., St. Louis, MO 63128, USA

Ph: 314-487-7600 USA - Call Toll Free USA 800-454-7159 - Fax: 314-487-0100



Model: P4H1012

Model: P4H1012

Size:

Projection **4-1/2"**
Height **10"**

Length:

- Overall **14"**
- Anchor Holes **12"**
- Rubber **8"**
Angle Size (2) **1/4"x3"x3"x9-1/2"**

Date: 02/13/07

All measurements are +/- 1/8"

