

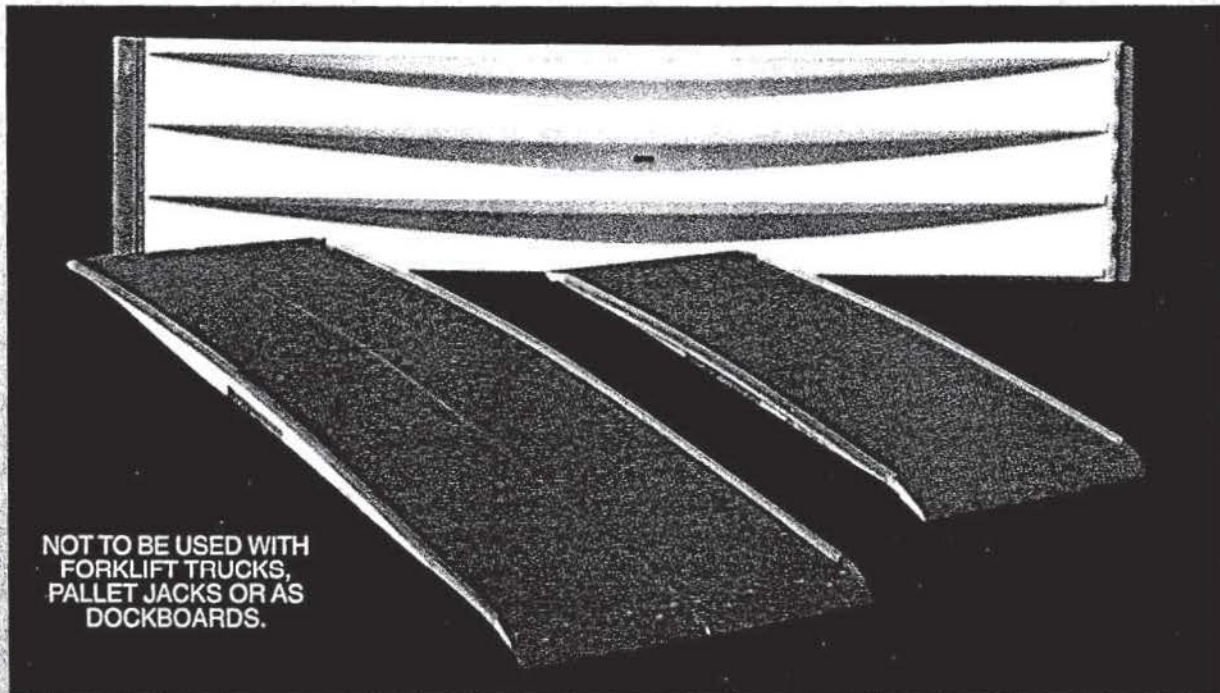
# FIBERGLASS RAMPS

## Lightweight & Strong

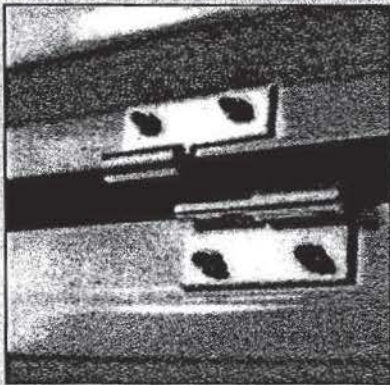
Handle heavier loads with a lighter weight ramp. Melcher ramps, constructed of re-inforced fiberglass composite which provides a high strength-to-weight ratio.

## Extruded Aluminum Ends & Sidecurbs

Heavy gauge extended aluminum ends and sidecurbs assure long life.

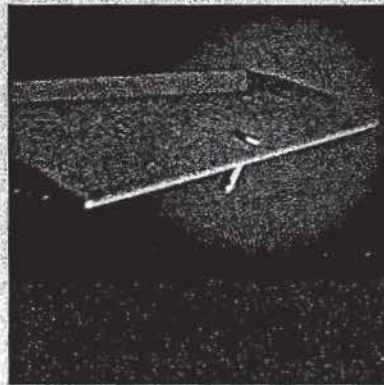


NOT TO BE USED WITH  
FORKLIFT TRUCKS,  
PALLET JACKS OR AS  
DOCKBOARDS.



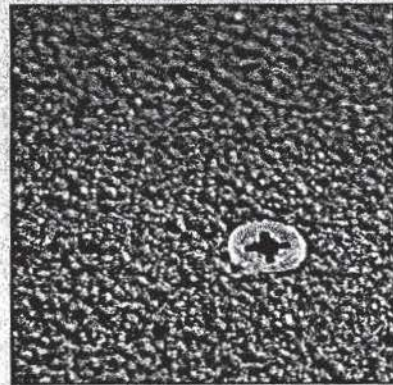
### Dual Ramp Joint Hinge

Joint hinge on Auto Loader and Dual Ramp slips in or out easily. Fastens halves together firmly and securely.



### Secure Attachment

For complete safety and stability when using your Melcher Ramp, we have provided a locking pin to secure the ramp to the truck or trailer.



### Super Traction

Supertraction surface makes for safer loading - wet or dry. After thousands of hours of use, if resurfacing is needed, kits are available from Melcher.