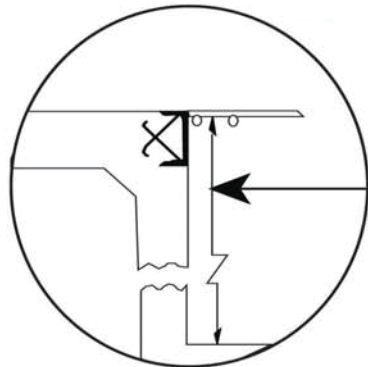
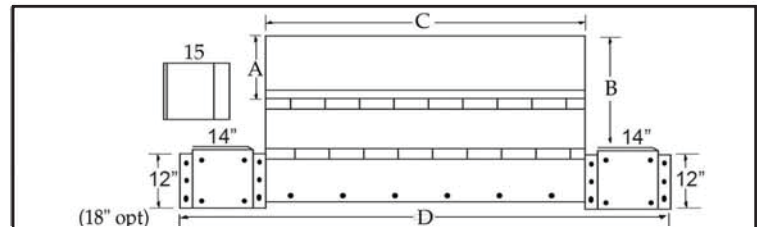
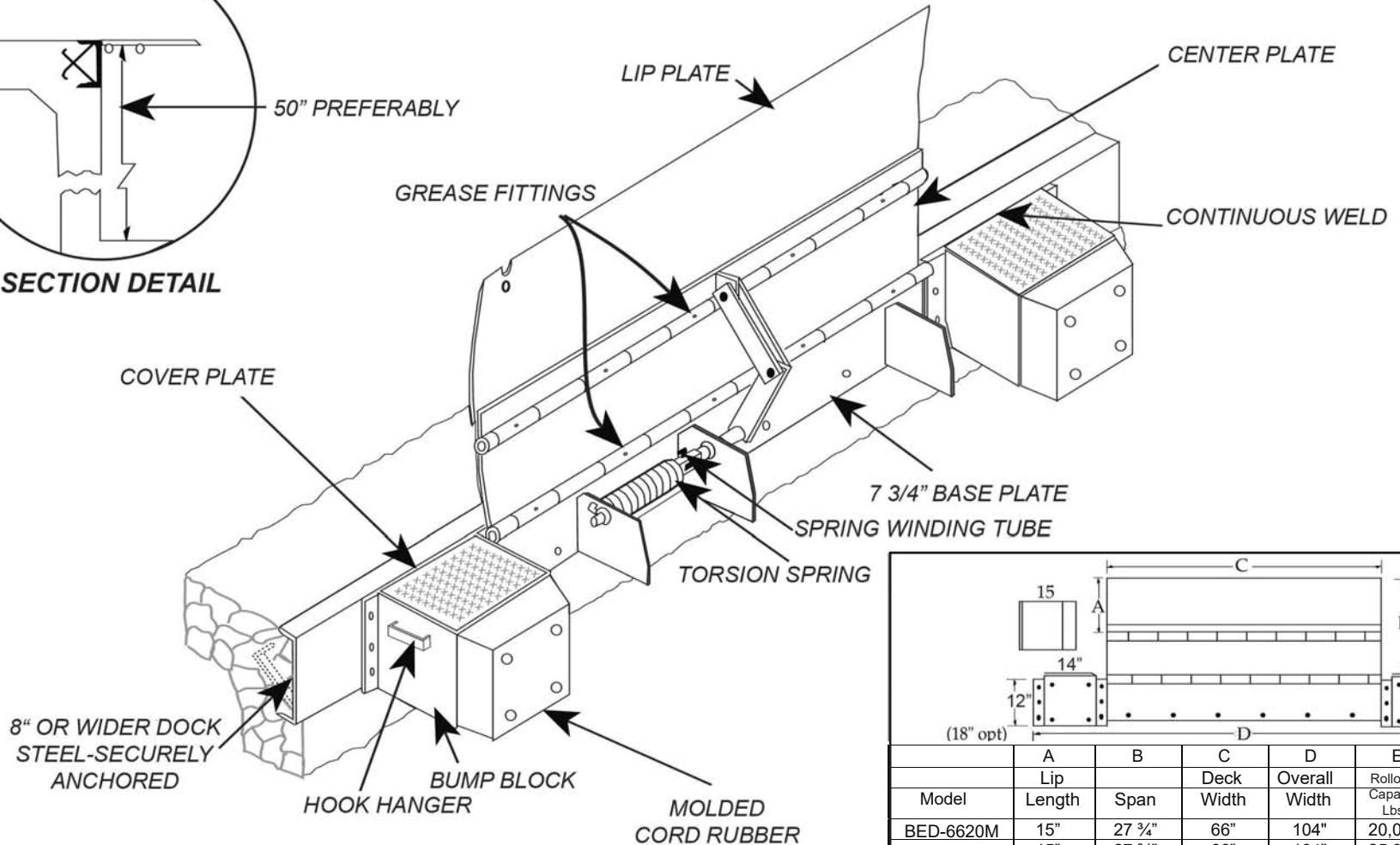


# Economy Edge of Dock BED SUBMITTAL DRAWING

06/19



SECTION DETAIL



	A	B	C	D	E	F
Model	Lip Length	Span	Deck Width	Overall Width	Rollover Capacity Lbs.	Plate Thickness
BED-6620M	15"	27 3/4"	66"	104"	20,000	3/8"
BED-6625MH	15"	27 3/4"	66"	104"	25,000	7/16"
BED-66-17	17"	29 3/4"	66"	104"	20,000	3/8"
BED-7220M	15"	27 3/4"	72"	110"	20,000	3/8"
BED-7820M	15"	27 3/4"	78"	116"	20,000	3/8"
BED-8420M	15"	27 3/4"	84"	122"	20,000	3/8"
Specify Job Requirements from Chart						

**NOTES:** Deck & Lip - 55,000 lb. min. yield steel.  
30,000 lb Capacity units available.

**BEACON**<sup>®</sup>  
BEACON INDUSTRIES, INC.

12300 Old Tesson Rd.

St. Louis, MO 63128-2247 USA

OFFICE: 314-487-7600 FAX: 314-487-0100

**Approval**

This includes my approval of design & dimensions.

Signed: \_\_\_\_\_

Date: \_\_\_\_\_

**Customer:** \_\_\_\_\_

**Quote:** \_\_\_\_\_

**Project:** \_\_\_\_\_