

# DRUM HANDLING EQUIPMENT

For Steel, Fiber and Plastic Drums



Beacon Industries, Inc.  
12300 Old Tesson Rd.  
St. Louis, MO 63128-2247 USA  
Phone: (314) 487-7600 Fax: (314) 487-0100  
E-Mail: [sales@beacontechology.com](mailto:sales@beacontechology.com)  
[beacontechology.com](http://beacontechology.com)

# HYDRAULIC DRUM GRIPPER

**BDRUM-HYD**

- Electric Hydraulic Operation
- Accommodates 55 & 30 Gallon Steel Drums
- Single or Double Drum Design
- Capacities up to 2,000 lbs.



BDRUM-HYD-2



BDRUM-HYD-1



Model Number	Acceptable Drum Types	Capacity (pounds)	Operation
BDRUM-HYD-1	55 & 30 Gallon Steel	1,000	Electric Hydraulic
BDRUM-HYD-2	55 & 30 Gallon Steel	2,000	Electric Hydraulic

# BARREL DOLLY

**BDCR-880-M**

- Simple Design
- Completely Mechanical Operation

Unique design is ideal for lifting and transporting plastic, steel and fiber drums with a top lip. Unit features a manual mechanical ratchet lift mechanism for lifting drums up to 12" above the floor. Spring loaded steel jaws securely grip top lip of drum. Straddle legs rotate for access to drums on pallets.



Legs are adjustable for drum access on pallets by simply removing the pin lock.

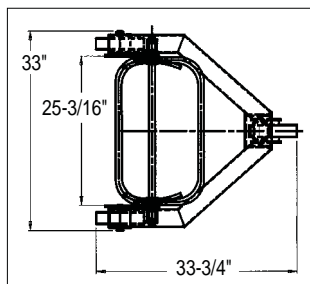


Model Number	Maximum Lift Height	Capacity (pounds)	Overall Size (W x L x H)
BDCR-880-M	12"	880	38" x 32" x 46"

# DRUM CONTROLLER

**BDC-550**

- Capacity is 550 lbs.
- Lift Height of 2-1/4"
- Automatic Engage/Disengage



Transport 55 gallon steel drums from work area to work area with this heavy duty Drum Controller. This unit lifts drums off the ground 2-1/4" with minimal effort (all this is done without straps or ratchet). Center the arms around the drum and pull the handle down. Overall height 62-13/16".

Model Number	Maximum Lift Height	Caster Style
BDC-550	2-1/4"	8" x 2" Phenolic

# DRUM PICKER

**BDRUM**



Model **BDRUM-55-36** allows the operator to easily lift a drum with the manual foot pump. Easy, safe transport of the drum from one location to another. Front wheels are 6" x 2". Rear casters are 3" x 1-1/2". Grips 30 and 55 gallon plastic, steel and fiber drums with a top lip.

Model Number	Maximum Lift Height	Capacity (pounds)	Overall Size (W x L x H)
BDRUM-55-36	61"	500	32" x 29" x 57-1/2"