

DOCK BARRICADES

BDJG Series



Electric - BDJG-100

This electric hydraulic *dock barricade* represents the next generation of innovative loading dock safety systems. Unit is simple to operate, push the up button or down button to perform the operation that is desired. Ergonomic electric lift design provides quick and effortless operation. Robust 1hp motor, pre-wired for 115volt, and 24volt control are just a few of the fine quality attributes. The BDJG-100 dock barricade is to be anchored to a 6" minimum thickness concrete (3,500 psi compressive strength) floor using $\frac{3}{4}$ " 0 x 6" long sleeve -type (or equivalent) anchors. Electrical hook-up: Plug in or Hard Wire.



Mechanical – BDJG-100MW

Prevent Accident Run-off

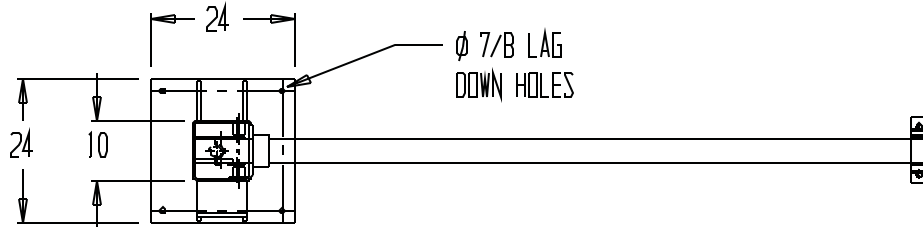


BEACON

Beacon Industries, Inc.
12300 Old Tesson Rd. St. Louis, MO 63128
PH: 314-487-7600 FAX: 314-487-0100
www.beacontechology.com

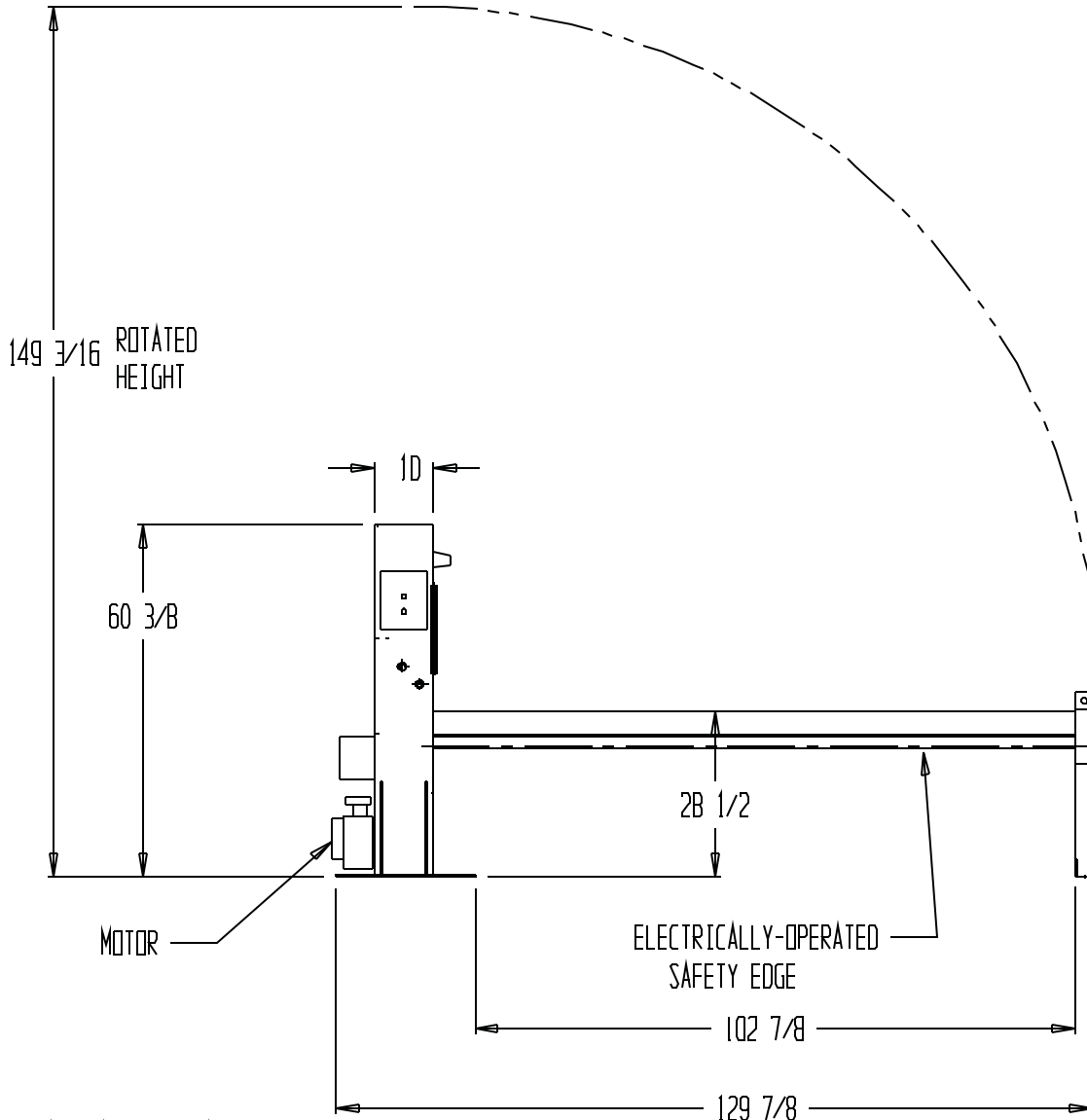
Rev. A, 05/08/03 DRB
 Rev. B, 7-2-03 SR

DOCK BARRICADE, BDJG-100



SPECIAL FEATURES

NONE



LEAD TIME WILL BEGIN
 UPON RECEIPT OF SIGNED
 APPROVAL DRAWING

STANDARD FEATURES

MODEL NUMBER: BDJG-100
 POWER : ELECTRIC / HYDRAULIC
 OVERALL LG: 129 7/8"
 OVERALL HT: 60 3/8"
 OVERALL ROTATED HT: 149 3/16"
 BASE PLATE SIZE: 24" x 24"
 STD ELECTRICALLY-OPERATED SAFETY EDGE
 UNIT BARRICADES A STD 8' x 8' DOOR

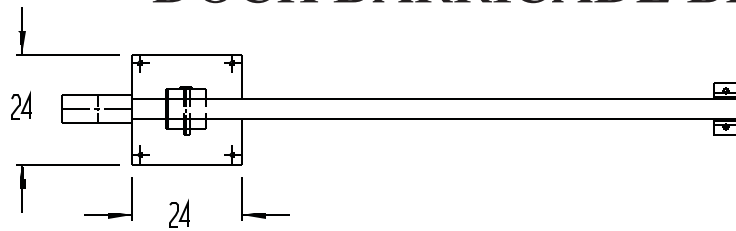
**SPECIAL UNITS ARE NON-RETURNABLE
 *AVAILABLE AT ADDITIONAL COSTS

APPROVAL

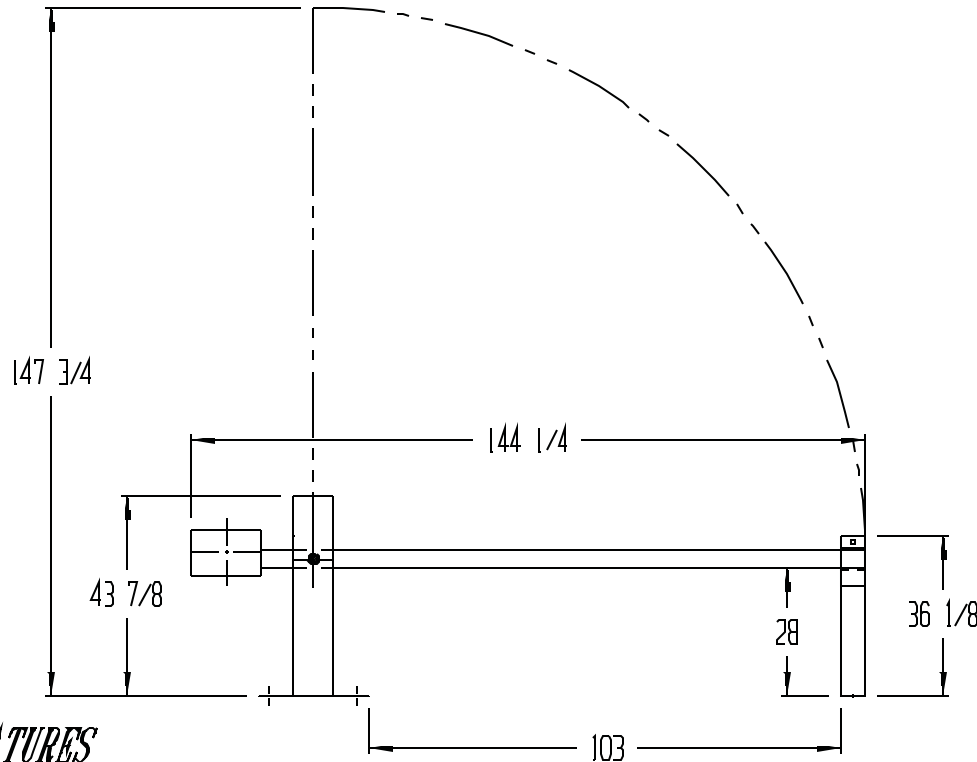
I, the undersigned, hereby approve this print
 As drawn As marked
 This includes my approval of design & dimensions.
 Signed: _____
 Date: _____

BEACON INDUSTRIES, INC		P.O. #:
		N.O. #:
DRAWN BY: SR	DATE: 8-22-05	SALES: LAURA D.
REFERENCE:		DRWG./FILE NAME: S307670-AP
Scale: 1:32		

DOCK BARRICADE BDJG-100M



SPECIAL FEATURES



**SPECIAL UNITS ARE NON-RETURNABLE
*AVAILABLE AT ADDITIONAL COSTS

PRODUCTION WILL START UPON
RECEIPT OF SIGNED APPROVAL
DRAWING

STANDARD FEATURES

DOCK BARRICADE MODEL NUMBER IS **BDJG-100M**

WIDTH IS 24 INCHES

LENGTH IS 146 3/4 INCHES

HEIGHT IS 150 1/4 INCHES (ARM ROTATION AT 90°)

MANUAL CONTROL

ALL STEEL CONSTRUCTION (ASTM A-36 MINIMUM) WITH WELDING TO MEET AWS.

WARNING: CHECK APPLICABLE STATE AND LOCAL CODES FOR YOUR AREA

APPROVAL

I, the undersigned, hereby approve this print
 As drawn As marked

This includes my approval of design & dimensions.

Signed: _____

Date: _____

BEACON INDUSTRIES		P.O. #:
		N.O. #:
DRAWN BY:	DATE:	SALES:
REFERENCE:	DRWG./FILE NAME:	