

PROTECTIVE BARRIERS

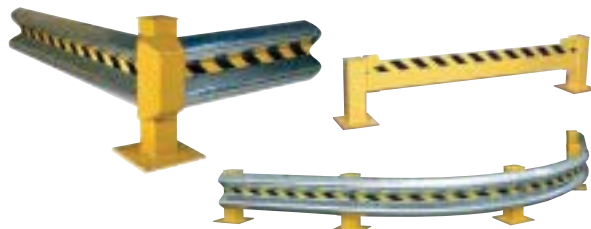
PROTECTIVE BARRIERS

FOR PEOPLE AND PROPERTY

APPLICATIONS

- ◆ Inner Plant Offices
- ◆ Shipping & Receiving Areas
- ◆ Aisle Ways
- ◆ Personnel Protection
- ◆ Parking Lots
- ◆ Racks & Shelves
- ◆ Specialty Machinery
- ◆ Mezzanines
- ◆ Recreation Areas
- ◆ Mezzanines

GUARD RAIL SYSTEMS



SAFETY BOLLARDS



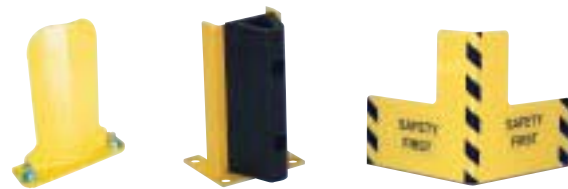
MACHINERY & RACK GUARDS



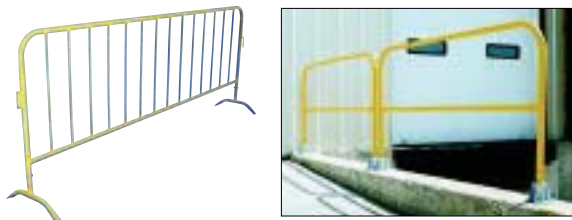
COLUMN & PIPE PROTECTORS



RACK GUARDS



SAFETY RAILING



GUIDANCE BARRIERS / GATES / MISC.



Beacon Industries, Inc.
12300 Old Tesson Rd.
St. Louis, MO 63128-2247 USA
Phone: (314) 487-7600 Fax: (314) 487-0100
beacontechnology.com
E-Mail: sales@beacontechnology.com

PROTECTIVE BARRIERS BOLLARD

APPLICATIONS

- ◆ Offices
- ◆ Specialty Machinery
- ◆ Aisle Ways
- ◆ Rack & Shelving
- ◆ Parking Lots
- ◆ Shipping and Receiving Areas
- ◆ Mezzanines

MOUNTING PLATES

- ◆ 1-3/4" guards have 5" x 5" plate
- ◆ 4" guards have 8" diameter plates
- ◆ 4-1/2" guards have 10" x 10" plates
- ◆ 5-1/2" guards have 12" x 12" plates

* NOTE: All mounting plates are 3/8" thick and have 1" diameter holes located 1" on center from all edges

* Excluding Chrome and 1-3/4" Diameter Bollards

MOUNTING KITS



OPTIONAL ANCHOR BOLTS
Suffix -BABK

STEEL BOLLARDS

Bollards can be used both indoors and outdoors to protect work areas, racking and personnel. Powder coated safety yellow finish. Molded rubber caps are removable standard on 4-1/2" and 5-1/2" diameter units. Caps are welded on the 1-3/4" diameter units. Mounting kits and replacement caps available.



Removable Rubber Caps are standard on 4-1/2" and 5-1/2" diameter units



MODEL	HEIGHT	DIAMETER	CAPS
BBOL-24-2	24"	1-3/4"	Welded
BBOL-36-2	36"	1-3/4"	Welded
BBOL-42-2	42"	1-3/4"	Welded
BBOL-24-4.5	24"	4-1/2"	Removable
BBOL-36-4.5	36"	4-1/2"	Removable
BBOL-42-4.5	42"	4-1/2"	Removable
BBOL-24-5.5	24"	5-1/2"	Removable
BBOL-36-5.5	36"	5-1/2"	Removable
BBOL-42-5.5	42"	5-1/2"	Removable
BBOL-ABK-3	Mounting Kit (4) 3/8" x 3" Anchor Bolts		
BBOL-ABK-4	Mounting Kit (4) 3/4" x 4" Anchor Bolts		

SERIES BBOL

CHROME BOLLARDS

Improve the image of your facility while protecting people and equipment with this heavy-duty Chrome Bollard. Unit is made of steel and finished with an attractive bright chrome plating for a clean fresh look. A black plastic top cap is removable to fill the bollard with concrete for greater strength and stability. The mounting plate is predrilled with (4) 1/2" diameter holes for quick and easy installation. Base diameter is 8". Mounting kit available.



8" Diameter Base with (4) 1/2" Holes

MODEL	DESCRIPTION	SIZE
BCBOL-42-4	Steel Chrome Bollard	42"H x 4"D
BCBOL-ABK-3	Mounting Kit	(4) 3/8" x 3"

SERIES BCBOL

BOLLARD DOME COVER

- Looks Better & Cleans Easier
- Prevents Tripping Hazards
- One Stop Quick Installation
- No more Punctured Pneumatic Tires
- No Hardware Required



Series BDOME



Model BBC-B-1.5

Prevent accidents and injuries. Easy to use device slides over and down bollards covering hardware. Outside diameter is 14". Overall height is 3". Powder coat finish. Plastic Hardware Caps snap over the top of anchor hardware. Sold separately.

MODEL	DESCRIPTION
BDOME-4.5	Dome Cover - Fits 4-1/2" Dia. Bollards
BDOME-5.5	Dome Cover - Fits 5-1/2" Dia. Bollards
BBC-B-1.5	(4) Caps to Snap Over the Top of Anchor Bolts

SERIES BDOME