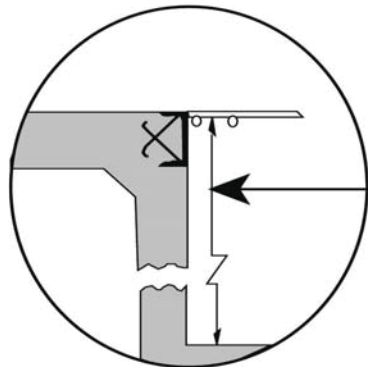
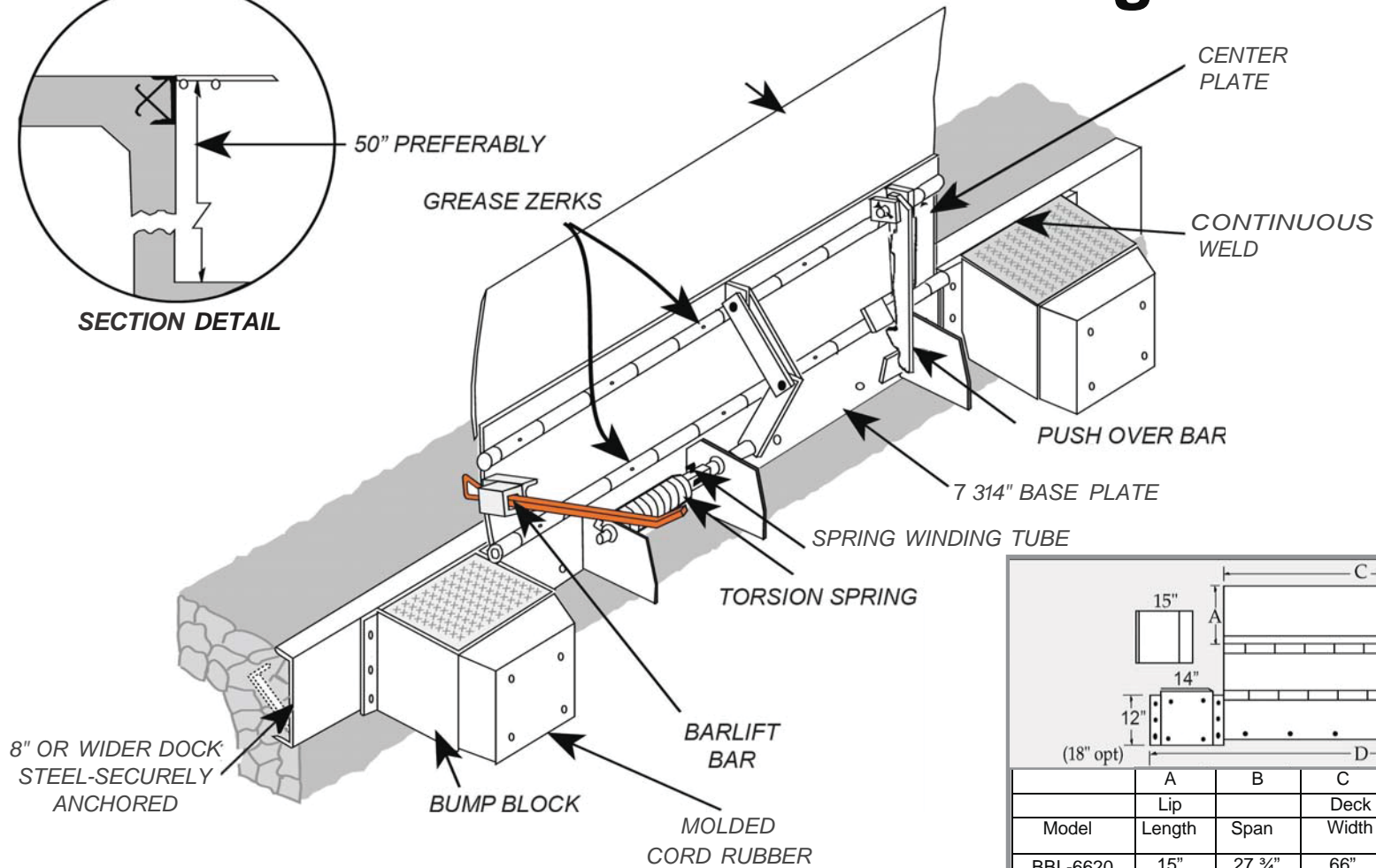


# BBL Submittal Drawing



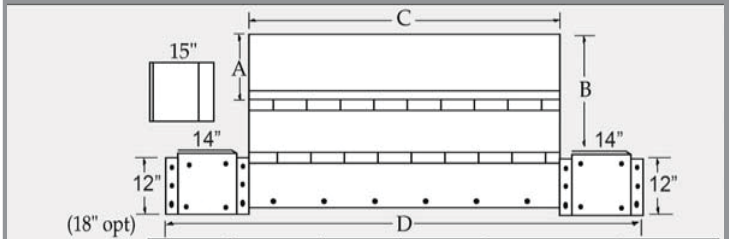
SECTION DETAIL



8" OR WIDER DOCK  
STEEL-SECURELY  
ANCHORED

**NOTES:** Deck & Lip - 55,000 lb. min. yield steel.  
30,000 lb. Capacity, in stored position.

**30,000 lb. Capacity Units Available**  
**35,000 lb. Capacity Units Available**  
**40,000 lb. Capacity Units Available**



	A	B	C	D	E	F
	Lip Length	Span	Deck Width	Overall Width	Rated Capacity Lbs	Plate Thickness
BBL-6620	15"	27 3/4"	66"	104"	20,000	3/8"
BBL-6625H	15"	27 3/4"	66"	104"	25,000	7/16"
BBL-66-17	17"	29 3/4"	66"	104"	20,000	3/8"
BBL-7220	15"	27 3/4"	72"	110"	20,000	3/8"
BBL-7820	15"	27 3/4"	78"	116"	20,000	3/8"
BBL-8420	15"	27 3/4"	84"	122"	20,000	3/8"
Specify Job Requirements from Chart						
BBL-7225H	15"	27-3/4"	72"	110"	25,000	7/16"

**BEACON<sup>®</sup>**  
**BEACON INDUSTRIES, INC.**

12300 Old Tesson Rd.

St. Louis, MO 63128-2247 USA  
OFFICE: 314-487-7600 FAX: 314-487-0100

**Approval**

This includes my approval of design & dimensions.

Signed: \_\_\_\_\_

Date: \_\_\_\_\_

**Customer:**

**Quote:**

**Project:**