

Ergonomic Solutions

OWNER'S MANUAL

MEZZANINE SAFETY GATES • MODEL BMEZZ-200

Contents

Assembly Instructions	1	Receiving Instructions	1
Assembly Drawing	1	Warranty	1

ASSEMBLY INSTRUCTIONS

- Set 24" long side brackets as shown approx. the width of the gate apart
- Align first gate (as shown) with the holes of the side rail brackets
- Install long bolts thru holes in gate and in side brackets (be sure to install link brackets for second gate)(see fig.1)
- Bolt second gate to link brackets with gate rotated down from the final assembled position
- Install one side of braces to second gate.
- Rotate second gate into position and install other end of brace to first gate
- Verify gate will rotate without binding
- Tighten all non-pivoting bolts
- Tighten the pivot point bolts only to engage the nylon locking section of the nut
- Again verify rotation of gate without binding
- Lag side rail brackets to floor
- Consult factory if adding or performing any modification to the original equipment.

RECEIVING INSTRUCTIONS

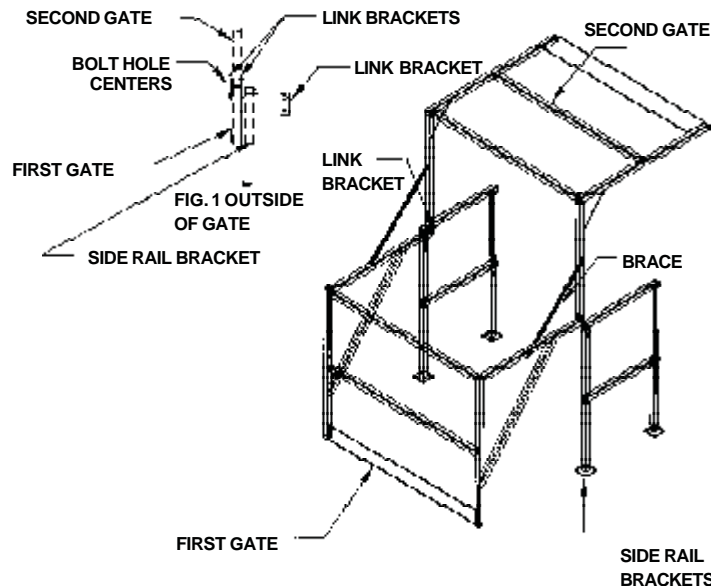
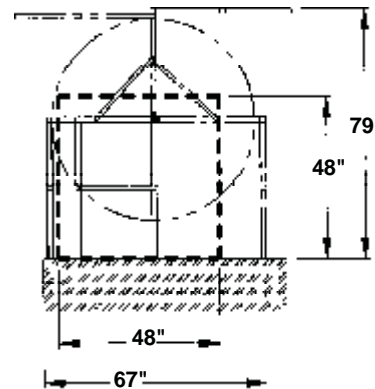
Every unit is thoroughly tested and inspected prior to shipment. However, it is possible that the unit may incur damage during transit. If damage is noticed when unloading, make a note of it on the **BILL OF LADING**. Remove all packing and strapping material, then inspect the unit again for damage. **IF DAMAGE IS EVIDENT, FILE A CLAIM WITH THE CARRIER IMMEDIATELY!**

WARRANTY

This product is warranted for 90 DAYS from date of purchase to be free of manufacturing defects in material and workmanship.

This warranty does not cover normal wear of parts or damage resulting from any of the following: negligent use or misuse of the product, use or application contrary to installation instructions, or disassembly, repair or alteration by any person prior to authorization from a factory representative.

ASSEMBLY DRAWING



MEZZANINE SAFETY GATES MODEL BMEZZ-200