



12300 Old Tesson Rd

St. Louis, MO 63128 USA

Phone: 314-487-7600 | Fax: 314-487-0100

www.beacontechnology.com

# OWNER'S MANUAL ADDENDUM

## MODEL BJIB-CB Counterweight Jib

(TO BE INSERTED WITH THE BJIB-FM OWNER'S MANUAL)

Serial number \_\_\_\_\_

Assembly, Installation, and Operation Instructions ... pg 2

Design and Counterweight Drawings ..... pgs 3-4

### IMPORTANT NOTES, WARNINGS AND SAFETY INSTRUCTIONS

Ensure that all employees understand and follow the following.

- ☞ Failure to read and understand this owner's manual before using or servicing the portable counterbalanced jib crane constitutes a misuse of the product. All persons who will install, use, or care for this product must be familiar with this material.
- The portable counterbalanced jib crane must not be used for supporting or transporting personnel.
- The portable counterbalanced jib crane's base must be filled with concrete and must remain on a level, compacted, and improved surface whenever a load is applied to its boom.
- Before moving the jib crane, remove any load from it and secure the boom and hoist against movement during transport.
- Always watch the suspended load carefully when the jib crane is in operation.
- The load must be removed from the horizontal I-beam before any work is performed on the mast.
- Ensure that all information / safety / warning labels stay in place and remain legible.
- Do not use the jib crane if any damage or unusual noise is observed.
- ◆ Do not perform any modifications to the portable counterbalanced jib crane or its concrete base without the manufacturer's approval. Failure to receive authorization for changes to the equipment could void the warranty.
- ◆ Maintenance and repairs are to be done only by personnel qualified to perform the required work. Consideration will not be given for warranty repair charges without prior written authorization by the manufacturer.

- 
- ☞ Consult the jib cranes' owner's manual for inspection, testing, and maintenance guidelines.
  - ☞ Consult the jib crane's owner's manual for safety label and warranty information.

### WHEN ORDERING

#### REPLACEMENT PARTS:

We take pride in using quality parts on the equipment we manufacture. We are not responsible for equipment problems resulting from the use of unapproved replacement parts.

To order replacement or spare parts for this equipment, contact the factory.

In any communication with the factory please be prepared to provide the machine's serial number, which is indicated on the machine dataplate.

### RECEIVING INSTRUCTIONS

It is possible that this product could incur damage during transit.

Inspect the unit closely when it arrives. *If you see evidence of damage or rough handling to either the packaging or to the product when it is being unloaded, immediately make a note of it on the Bill Of Lading!*

It is important that you remove the product's packaging upon its arrival to ensure that there is no concealed damage or to enable a timely claim with the carrier for freight damage.

Also verify that the product and its specifications are as ordered.

## INSTALLATION AND ASSEMBLY INSTRUCTIONS – BJIB-CB

*Review this entire page before installing the portable counterbalanced jib crane.*

*Consult the factory in the event there are any questions or problems at the time of installation, or for information regarding optional features not covered by the owner's manual.*

- Modifications or additions to this jib crane without prior manufacturer's authorization may void the product's warranty. The addition of ancillary equipment to the structure or base of the jib crane may necessitate that its load capacity be reduced.
- The installation must be made so that it complies with all the regulations applicable to the crane and its location. The end-user must verify that the supplied equipment is installed so it will be suited to the environment in which it will be used.
- Assembly must be performed by suitably trained personnel with access to the appropriate equipment. The electrical aspects of the installation should be performed by an electrician.

For the assembly of a standard portable counterbalanced jib crane, you will need the following:

1. A fork truck or hoisting means to unload the jib crane parts from the freight truck and set them into place.
2. A smooth, level surface on which to assemble the jib crane.
3. 60-pound bags of concrete mix (about 40 bags for the 18" base, or about 80 bags for the 36" base).

## OPERATION INSTRUCTIONS – BJIB-CB

- *Consult OSHA regulation 1910.179 for the owner's / user's responsibilities regarding the operation, care, and maintenance of overhead and gantry cranes.*
- *Ensure that all employees involved in the operation of this jib crane understand and follow these instructions!*

The standard model portable counterbalanced jib crane is suitable for use indoors and outdoors in most non-classified industrial and commercial locations. Along with an appropriate hoist and trolley, it is intended to be used to lift and position stable, evenly-distributed loads having a horizontal center of gravity near the hook point of the hoist.

*Caution:* This product is not designed to be used while it is resting on the forks of a fork truck, or for transporting a load that is hanging from its boom.

### Loading:

The load rating, in pounds, is shown on the machine dataplate located on the jib crane's mast. It indicates the maximum net capacity of the jib crane with a static load that is centered under the hoist's lifting point.

*Note:* The addition of any ancillary equipment to the jib crane, or any accessories hanging from the hoist, must be taken into account when determining the maximum working load to be placed on the hoist and jib boom.

*Warning:* Do not exceed the jib crane's load rating. Injury to personnel or permanent damage to the jib crane, hoist, or trolley could result from exceeding the listed capacity.

*Caution:* Do not attempt to laterally pull or drag loads that are connected to the jib crane's boom.

To transport and put in place a standard portable counterbalanced jib crane:

*Caution:* Always watch the jib crane's boom closely when the jib crane is being transported.

1. Any load must be removed and the boom secured against rotation before the jib crane is moved. The boom should be secured so that it is parallel to the direction that the jib crane will be transported.
2. Insert the forks of an appropriately-rated fork truck into the fork pockets located in the counterweight base.
3. Lift the jib crane just high enough to prevent it from making contact with the ground, and tilt the fork truck mast slightly backward.
4. Move the jib crane to the location it is to be used.

*Caution:* Do not exceed a travel rate of more than 3 feet per second.

### Operation:

Inspect the jib crane and its associated equipment for damage on a daily basis.

*Warning:* Ensure that equipment and personnel are clear of the boom's swing radius before rotating the boom.

*Warning:* Be certain no part of any person or object is under any part of the hanging load before it is lowered.

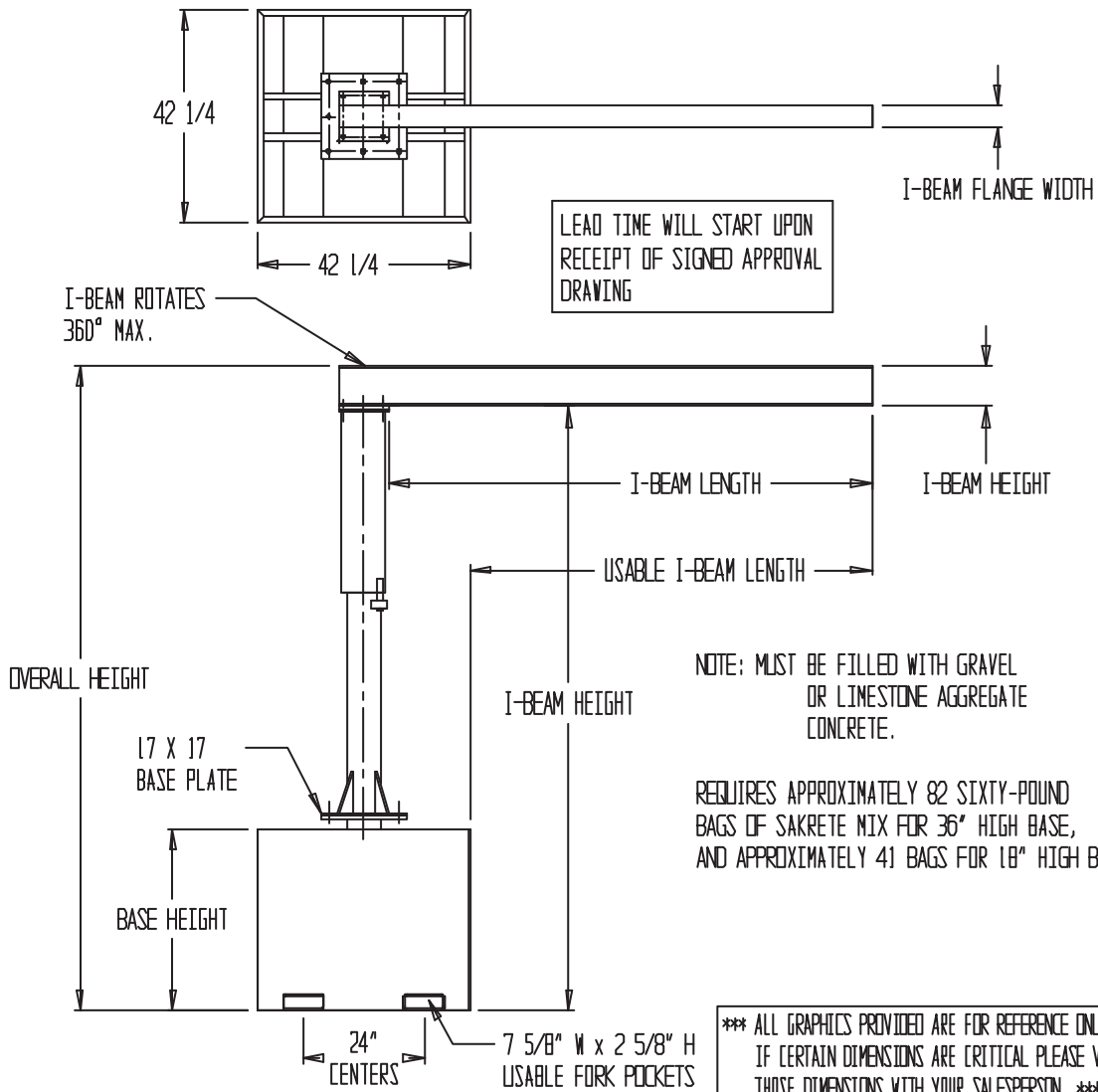
*Caution:* Always carefully watch any hanging load when the boom is being swung.

*Caution:* Never use the jib crane if any damage or unusual noise is observed, if it is in need of repairs, or if it seems to be malfunctioning. Notify your supervisor or maintenance personnel if you notice anything out of the ordinary.

**DESIGN DRAWING / SAMPLE APPROVAL DRAWING -- BJIB-CB**

\*\*SPECIAL UNITS ARE NON-RETURNABLE  
\*AVAILABLE AT ADDITIONAL COSTS

**COUNTERBALANCE JIB - MODEL BJIB-CB-...**



**STANDARD FEATURES:**

- MODEL NUMBER IS BJIB-CB-...
- CAPACITY IS PER MODEL
- USEABLE HEIGHT IS PER MODEL
- I-BEAM HEIGHT IS PER MODEL
- I-BEAM FLANGE WIDTH IS PER MODEL
- OVERALL BASE SIZE IS 42-1/2" W X 42-14" L X 18" H OR 36" H

**SPECIAL FEATURES:**

NONE

\*\*Any additions, deletions or omissions must be corrected on this drawing, as this drawing will be considered all inclusive.\*\*

NOTE: MUST BE FILLED WITH GRAVEL OR LIMESTONE AGGREGATE CONCRETE.  
REQUIRES APPROXIMATELY 82 SIXTY-POUND BAGS OF SAKRETE MIX FOR 36" HIGH BASE, AND APPROXIMATELY 41 BAGS FOR 18" HIGH BASE.

\*\*\* ALL GRAPHICS PROVIDED ARE FOR REFERENCE ONLY, IF CERTAIN DIMENSIONS ARE CRITICAL PLEASE VERIFY THOSE DIMENSIONS WITH YOUR SALESPERSON. \*\*\*

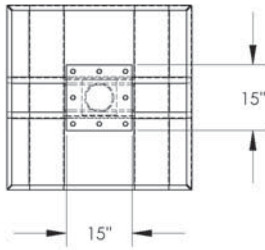
**APPROVAL**

I, the undersigned, hereby approve this print  
 As drawn     As marked  
 This includes my approval of design & dimensions.  
 Signed: \_\_\_\_\_  
 Date: \_\_\_\_\_

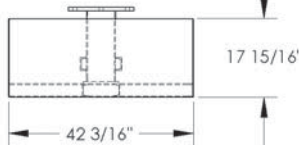
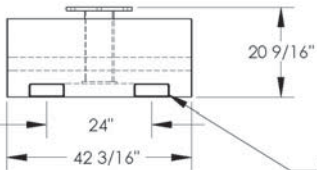
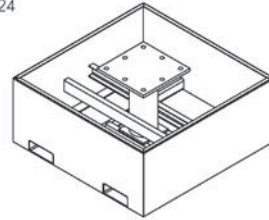
<b>Bear Claw</b> ™		P.O.#: -
		V.O.#: -
DRAWN BY: DRB	DATE: 09/09/06	SALES: -
REFERENCE: -	SCALE: 1:32	ORIG./FILE NAME: PER MODEL

**COUNTERWEIGHT DRAWINGS, BJIB-CB**

**EMPTY COUNTERBALANCE JIB BASE, BJIB-CB-18-B**



3-D FOR REFERENCE ONLY  
SCALE 1:24



NOTE: MUST BE FILLED WITH GRAVEL OR LIMESTONE AGGREGATE CONCRETE.

REQUIRES APPROXIMATELY (41) 60 - LB. BAGS OF SAKRETE MIX TO FILL.

UNIT WEIGHT WHEN FILLED WITH CONCRETE MUST EQUAL OR EXCEED 2,665 LBS. TO FUNCTION SAFELY AND PROPERLY.

**STANDARD FEATURES**

MODEL NUMBER IS BJIB-CB-36-B  
OVERALL WIDTH IS 42 3/16"  
OVERALL LENGTH IS 42 3/16"  
OVERALL HEIGHT IS 39 1/4"  
FORK POCKETS: 7 5/8" x 2 5/8"  
FORK POCKET CENTERS ARE 24"

FOR USE WITH MODELS:  
BJIB-CB-50-10-10  
BJIB-CB-100-8-10

7 5/8" W x 2 5/8" L  
USABLE FORK POCKETS

APPROXIMATE WEIGHT EMPTY IS: 353.37 lbs.

**A P P R O V A L**

I, the undersigned, hereby approve this print. This includes my approval of design & dimensions

[ ] No changes [ ] As marked

Signed: \_\_\_\_\_ Date: \_\_\_\_\_

LEAD TIME WILL START UPON RECEIPT OF SIGNED APPROVAL DRAWING

\*\*Any additions, deletions or omissions must be corrected on this drawing, as this drawing will be considered all inclusive.\*\*

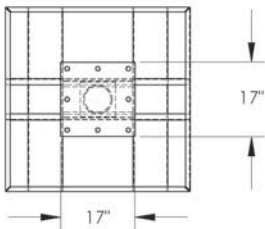
**SPECIAL FEATURES**

NONE

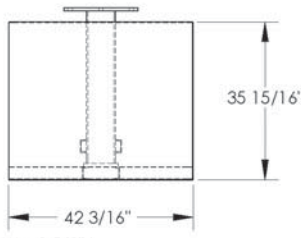
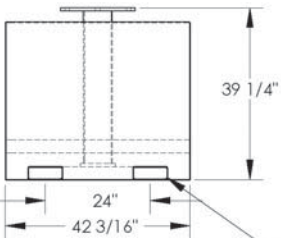
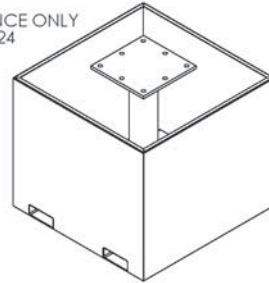
ALL SPECIAL UNITS ARE NON-RETURNABLE

<b>BearClaw</b> <sup>TM</sup>		P.O.#	X
DRAWN BY: SR		W.O.#	X
DATE:	10-6-05	SALES:	X
SCALE:	1:24	FILE NAME:	28-007-124
REFERENCE:	X	QUOTE #	X

**EMPTY COUNTERBALANCE JIB BASE, BJIB-CB-36-B**



3-D FOR REFERENCE ONLY  
SCALE 1:24



NOTE: MUST BE FILLED WITH GRAVEL OR LIMESTONE AGGREGATE CONCRETE.

REQUIRES APPROXIMATELY (82) 60 - LB. BAGS OF SAKRETE MIX TO FILL.

UNIT WEIGHT WHEN FILLED WITH CONCRETE MUST EQUAL OR EXCEED 5,330 LBS. TO FUNCTION SAFELY AND PROPERLY.

**STANDARD FEATURES**

MODEL NUMBER IS BJIB-CB-36-B  
OVERALL WIDTH IS 42 3/16"  
OVERALL LENGTH IS 42 3/16"  
OVERALL HEIGHT IS 39 1/4"  
FORK POCKETS: 7 5/8" x 2 5/8"  
FORK POCKET CENTERS ARE 24"

FOR USE WITH MODELS: BJIB-CB-50-10-10  
BJIB-CB-100-8-10

7 5/8" W x 2 5/8" L  
USABLE FORK POCKETS

APPROXIMATE WEIGHT EMPTY IS: 485.42 lbs.

**A P P R O V A L**

I, the undersigned, hereby approve this print. This includes my approval of design & dimensions

[ ] No changes [ ] As marked

Signed: \_\_\_\_\_ Date: \_\_\_\_\_

LEAD TIME WILL START UPON RECEIPT OF SIGNED APPROVAL DRAWING

\*\*Any additions, deletions or omissions must be corrected on this drawing, as this drawing will be considered all inclusive.\*\*

**SPECIAL FEATURES**

NONE

ALL SPECIAL UNITS ARE NON-RETURNABLE

<b>BearClaw</b> <sup>TM</sup>		P.O.#	X
DRAWN BY: SR		W.O.#	X
DATE:	10-6-05	SALES:	X
SCALE:	1:24	FILE NAME:	28-007-125
REFERENCE:	X	QUOTE #	X