

**Ergonomic Solutions**

# OWNER'S MANUAL

## HAND LIFT TRUCK • MODEL BHYD-5 & BHYD-10

### Contents

Safety Precautions .....	1	Foot Pump Exploded Parts Drawing .....	3
Receiving Instructions .....	1	Parts List for Foot Pump .....	3
Warranty .....	1	Troubleshooting Quick Ref. Guide .....	4
Exploded Parts Drawing .....	2	Warning label Identification .....	5
Parts List .....	2	Material Handling Problem Solving .....	6

### SAFETY PRECAUTIONS

**Read owner's manual completely before operating unit!**

- Never exceed the maximum loading capacity of 880 pounds.
- Never load the unit unless you are watching it.
- Stand clear of load while loading and unloading.
- Load must be evenly distributed on deck to insure stability.
- Use caution in moving a loaded unit; avoid obstructions and floor defects.
- Always apply wheel brakes when unit is not in motion.
- Never go under deck if there is weight on unit.
- Do not continue to pump on the foot lever if the deck is not raising.
- Remove weight before working on unit.
- Do not use brake fluid or jack oils. Use AW-32 hydraulic oil or equivalent.
- Use only maintenance parts supplied or approved by the manufacturer.
- Consult factory before performing any modification to the original equipment.
- Make sure all operator safety labels are in place (p.5).

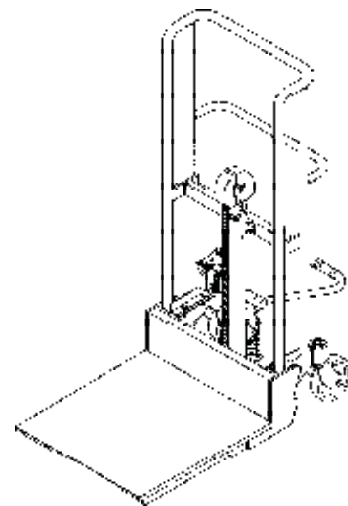
### RECEIVING INSTRUCTIONS

Every unit is thoroughly tested and inspected prior to shipment. However, it is possible that the unit may incur damage during transit. If damage is noticed when unloading, make a note of it on the **BILL OF LADING**. Remove all packing and strapping material, then inspect the unit again for damage. **IF DAMAGE IS EVIDENT, FILE A CLAIM WITH THE CARRIER IMMEDIATELY!**

### WARRANTY

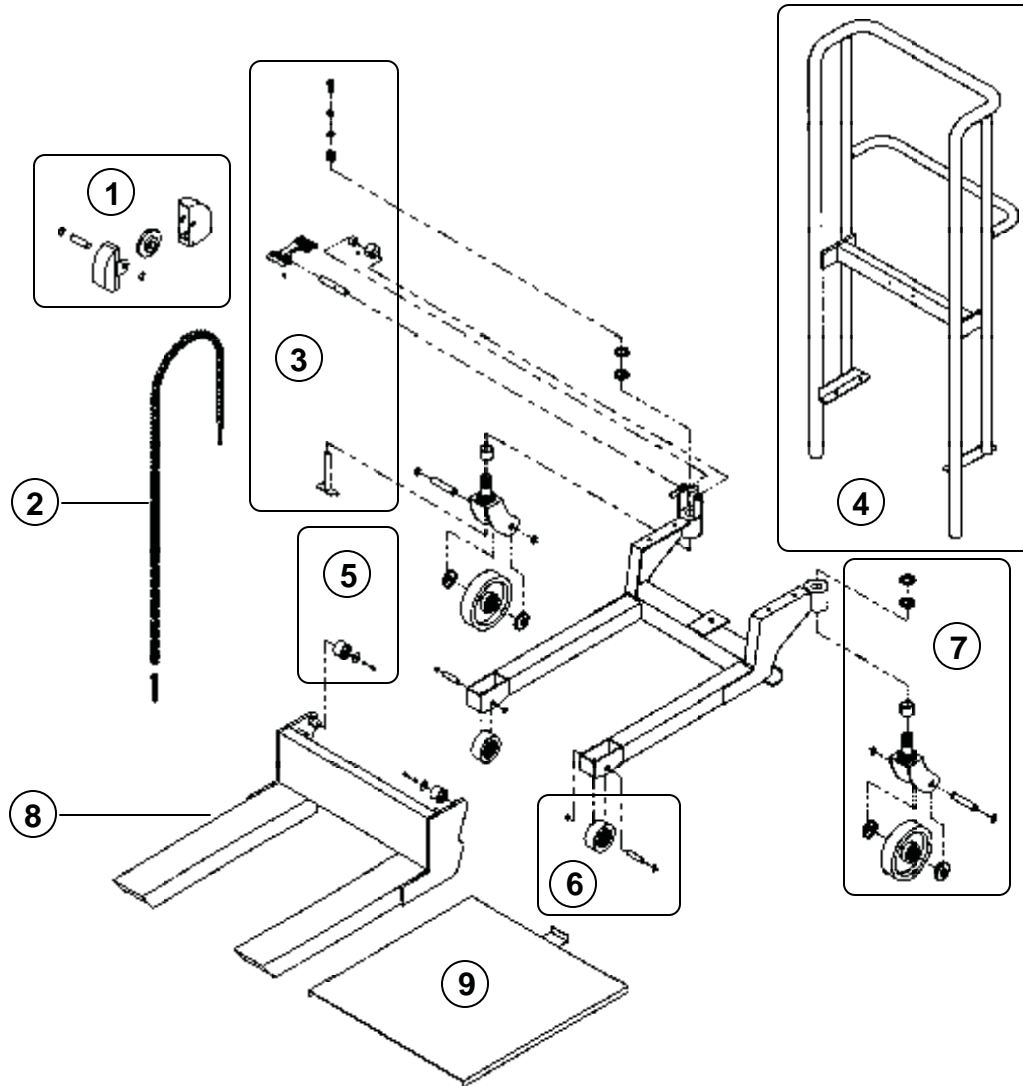
This product is warranted for 90 DAYS from date of purchase to be free of manufacturing defects in material and workmanship. The manufacturer's obligation hereunder is limited to repairing such products during the warranty period, provided the product is sent prepaid back to the factory.

This warranty does not cover normal wear of parts or damage resulting from any of the following: negligent use or misuse of the product, use or application contrary to installation instructions, or disassembly, repair or alteration by any person prior to authorization from a factory representative.



**HAND LIFT TRUCK  
MODEL BHYD-5 & BHYD-10**

# HAND LIFT TRUCK

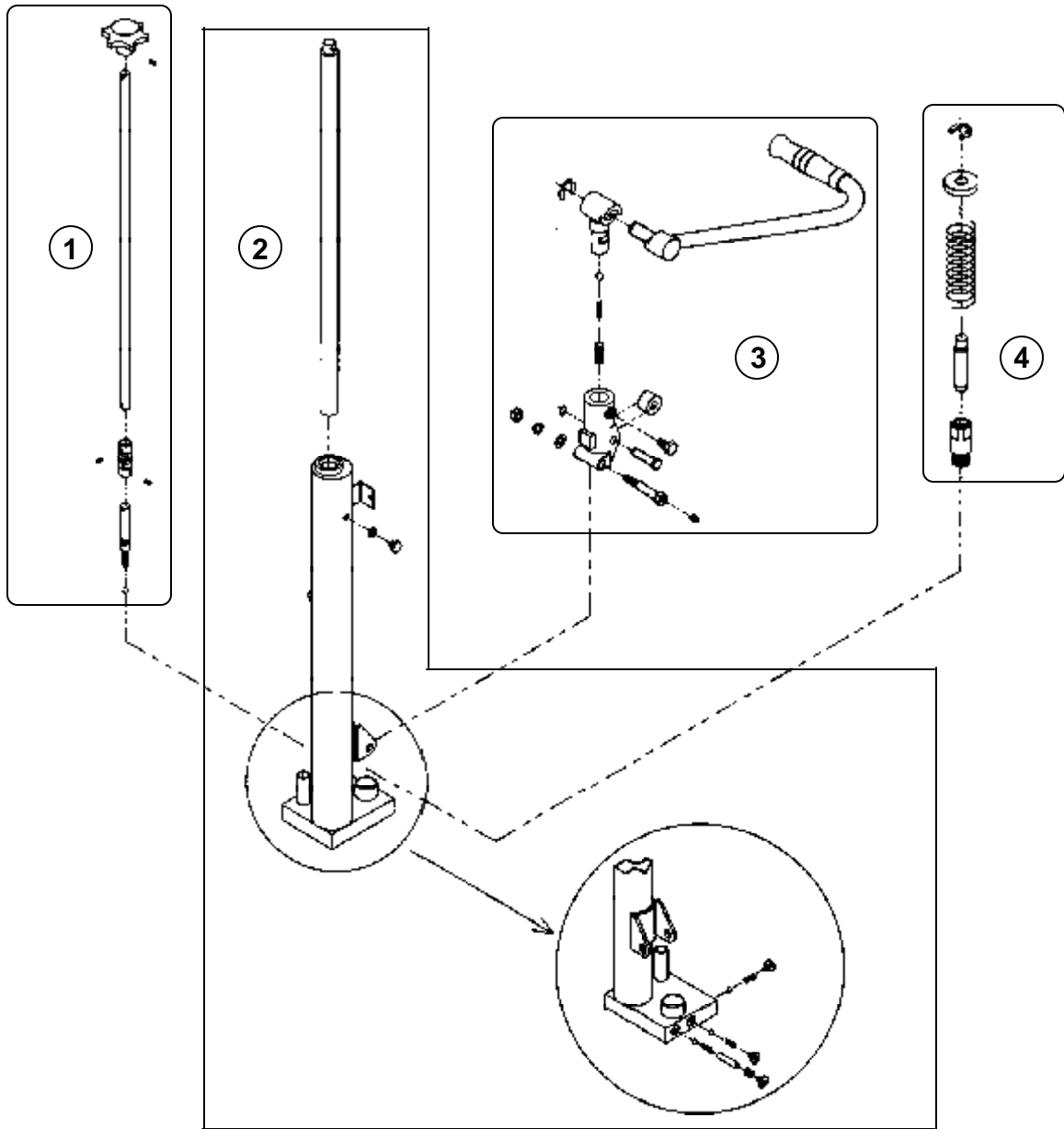


**PARTS IDENTIFICATION HAND LIFT TRUCK MODEL  
BHYD-5 & BHYD-10**

ITEM NO.	DESCRIPTION	BHYD-5 ENGINEER NO.	BHYD-5 PART NO.	BHYD-10 ENGINEER NO.	BHYD-10 PART NO.	QTY.
1	Chain Cover	B33-154-004	BHYD5-CHCO	B33-154-016	BHYD10-CHCO	1
2	Chain Assembly	B33-154-005	BHYD5-CHASSE	B33-154-017	BHYD10-CHASSE	1
3	Brake Assembly	B33-154-006	BHYD5-BRASSE	B33-154-006	BHYD10-BRASSE	1
4	Mast	B33-154-032	BHYD5-MA	B33-514-018	BHYD10-MA	1
5	Guide Wheel and Axle	B33-154-007	BHYD5-GWHAX	B33-154-007	BHYD10-GWHAX	4
6	Front Wheel and Axle	B33-154-008	BHYD5-FWHAX	B33-154-008	BHYD10-FWHAX	2
7	Rear Wheel and Axle	B33-154-009	BHYD5-RWHAX	B33-154-009	BHYD10-RWHAX	2
8	Forks Assembly	B33-528-001	BHYD5-FR	B33-528-001	BHYD10-FR	1
9	Top Deck	B33-013-001	BHYD5-TODK	B33-013-001	BHYD10-TODK	1

a/k Available only with purchase of kit

# FOOT PUMP (HAND LIFT TRUCK)



## PARTS IDENTIFICATION FOOT PUMP (HAND LIFT TRUCK)

KIT NO.	ITEM NO.	DESCRIPTION	BHYD-5 ENGINEER NO.	BHYD-5 PART NO.	BHYD-10 ENGINEER NO.	BHYD-10 PART NO.	QTY.
1	1	Release Knob Assembly	B33-154-010	BHYD5-FP01	B33-154-010	BHYD10-FP01	1
2	2	Pump Assembly	B33-154-011	BHYD5-FP02	B33-154-018	BHYD10-FP02	1
3	3	Foot Pedal Assembly	B33-154-012	BHYD5-FP03	B33-154-012	BHYD10-FP03	1
4	4	Plunger Assembly	B33-154-013	BHYD5-FP04	B33-154-013	BHYD10-FP04	1
A	A	Pump Seal Kit	B33-144-401	BHYD5-KITA	B33-144-401	BHYD10-KITA	1
B	B	Complete Assembly	B33-154-014	BHYD5-KITB	B33-154-014	BHYD10-KITB	1

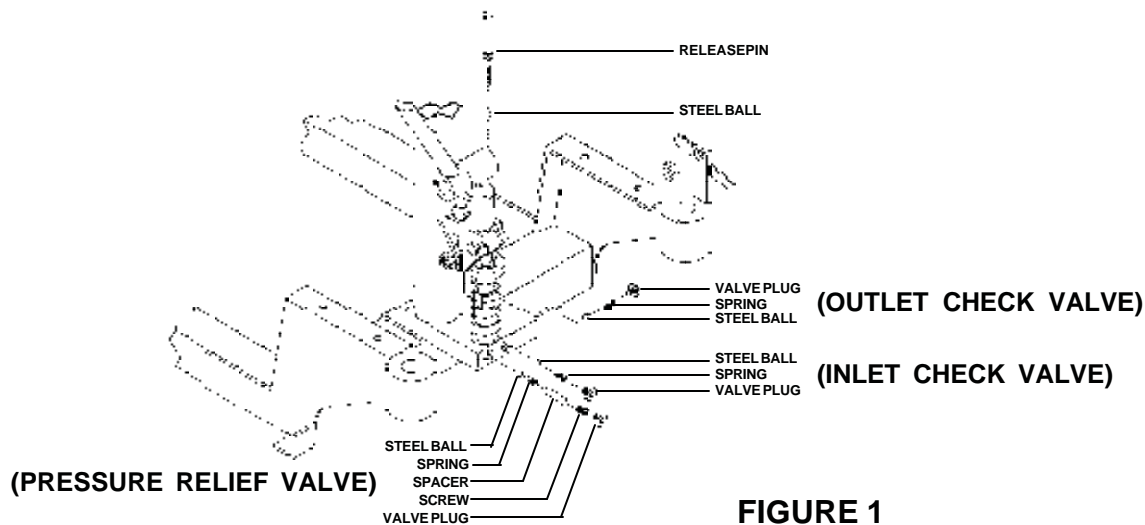
a/k Available only with purchase of kit

# Troubleshooting Quick Reference Guide

(For further information please contact the factory)

**WARNING! BEFORE PERFORMING ANY MAINTENANCE WORK ALWAYS ENSURE THAT THE DECK/FORKS ARE IN LOWER POSITION**

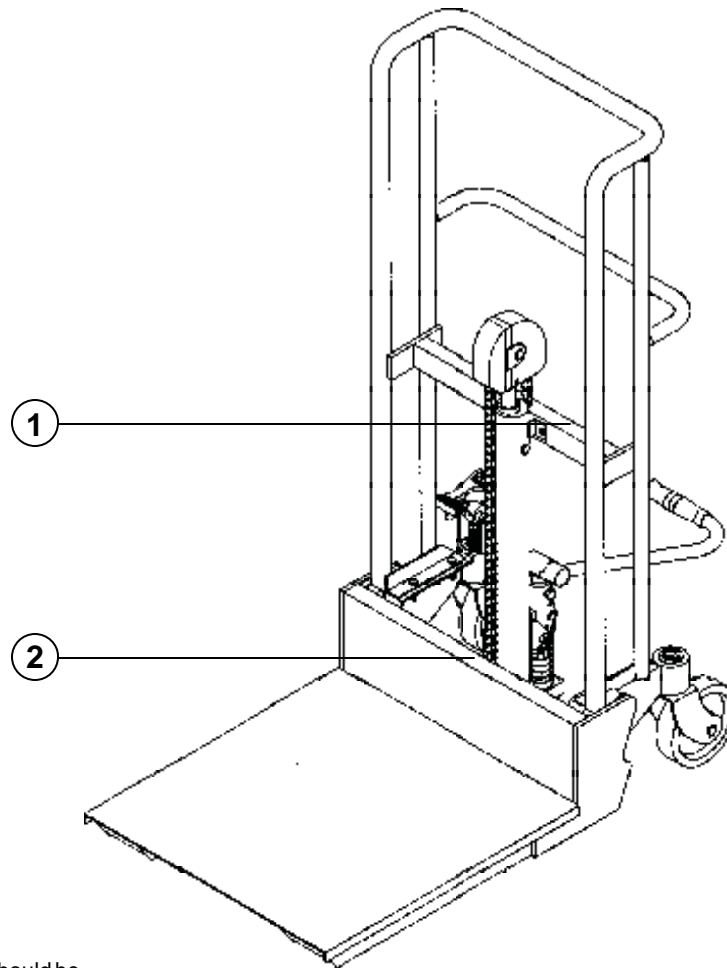
Observation	Possible Cause	Remedy
1.) Deck/forks do not raise.	<ul style="list-style-type: none"> <li>a. Excessive load.</li> <li>b. Oil is low.</li> <li>c. Relief valve set too low.</li> <li>d. Released pin is not rotating to closed position.</li> <li>e. Breather cap is not allowing air into cylinder.</li> </ul>	<ul style="list-style-type: none"> <li>a. Remove part of the load.</li> <li>b. Fill oil as necessary.</li> <li>c. Increase only as necessary.</li> <li>d. Check linkage for proper rotation.</li> <li>e. Be sure cap has air hole. Clean cap out with compressed air.</li> </ul>
2.) Foot pedal goes down but deck/forks do not raise.	<ul style="list-style-type: none"> <li>a. Particle of dirt under the pressure relief valve.</li> <li>b. Particle of dirt under inlet check valve.</li> </ul>	<ul style="list-style-type: none"> <li>a. Lower deck/forks - Remove and clean steel ball and seat. (Refer figure 1)</li> <li>b. Lower deck/forks - Remove and clean inlet ball and seat. (Refer figure 1)</li> </ul>
3.) Unit will pump under no load or when rapidly stroked, or pedal will stroke without pumping.	<ul style="list-style-type: none"> <li>a. Pump is air locked.</li> <li>b. Inlet check valve has foreign material on seat.</li> <li>c. Relief valve setting is out of adjustment.</li> <li>d. Foreign material on pressure relief valve seat.</li> <li>e. Release pin has foreign material on the seat or is stuck in the open position.</li> </ul>	<ul style="list-style-type: none"> <li>a. Bleed air from system inlet.</li> <li>b. Same as 2(b).</li> <li>c. Adjust relief valve setting higher.</li> <li>d. Same as 2(a).</li> <li>e. Lower deck/forks - Remove and clean steel ball and seat. (Refer figure 1)</li> </ul>
4.) Deck/forks raise when the pump is stroked but lower on return stroke.	<ul style="list-style-type: none"> <li>a. Outlet check valve is leaking.</li> </ul>	<ul style="list-style-type: none"> <li>a.1. Lower deck/forks - Remove and clean steel ball and seat. (Refer figure 1)</li> <li>a.2. Pump vigorously to remove debris.</li> </ul>
5.) Deck/forks raise but is too slow.	<ul style="list-style-type: none"> <li>a. Foreign material stuck under pressure relief valve or under inlet check valve.</li> </ul>	<ul style="list-style-type: none"> <li>a. Same as 2(a) / 2(b).</li> </ul>
6.) Spongy or jerky operation.	<ul style="list-style-type: none"> <li>a. Check for foreign material stuck in the deck or frame rails.</li> <li>b. Oil is low.</li> </ul>	<ul style="list-style-type: none"> <li>a. Correct as necessary.</li> <li>b. Same as 1(b).</li> </ul>
7.) Deck/forks raise but do not lower.	<ul style="list-style-type: none"> <li>a. Foreign object blocking roller travel.</li> <li>b. Release pin is not rotating to open position.</li> </ul>	<ul style="list-style-type: none"> <li>a. Correct as necessary.</li> <li>b. Same as 1(d).</li> </ul>



**FIGURE 1**

# WARNING LABEL IDENTIFICATION

MAKE SURE ALL WARNING LABELS ARE IN PLACE!



\* Product safety signs or labels should be periodically inspected and cleaned by the product users as necessary to maintain good legibility for safe viewing distance. ANSI 535.4 (10.21)  
Contact manufacturer for replacement labels.

1

**CAPA 400Kgs (880lbs)**

2

<b>⚠ CAUTION</b>	<b>⚠ PRECAUCIÓN</b>	<b>⚠ ATTENTION</b>
<b>PLATFORM MUST BE LOWERED BEFORE MOVING LIFT</b>	<b>LA PLATAFORMA DEBE DE ESTAR EN LA POSICIÓN BAJA ANTES DE MOVER EL ELEVADOR</b>	<b>LA PLATE-FORME DOIT ÊTRE ABAISSÉE AVANT D'ACTIVER LE MONTE-CHARGE</b>

210