

**Drum Handling Solutions**

# OWNER'S MANUAL

## FORKLIFT DRUM DUMPER SERIES BDCR-205

**Contents**

|  |       |   |   |
|--|-------|---|---|
| Warnings and Safety Instructions ..... | 1 & 2 | Warning Label Identification .....      | 2 |
| Receiving Instructions .....           | 1     | Periodic Maintenance Instructions ..... | 2 |
| Warranty .....                         | 1     | Parts List .....                        | 3 |
| Operating Instructions .....           | 2     | Location of Center of Gravity .....     | 4 |

**WARNINGS & SAFETY INSTRUCTIONS**

*Read owner's manual completely before operating unit!*

- Never operate the Forklift Drum Dumper unless you are watching it.
- Never use the drum carrier/rotator if the cradle is in need of repairs or in the case of a malfunction.
- Do not stand below any part of a raised drum carrier/rotator or drum.
- Never exceed the maximum loading capacity of the drum carrier/rotator as described below:  
 Model BDCR-205-8: 800 pounds for FULL drum, or 500 pounds for HALF-FULL drum.  
 Model BDCR-205-15: 1500 pounds for FULL drum, or 900 pounds for HALF-FULL drum.
- Always load drum at the center of the cradle.
- Consult factory for uneven loading.
- When elevation is not required, always transport the drum in the lowered position.
- Always transport drum only in vertical position when fork truck is moving.
- Do not allow drum to impact on floor, ground, or dumping station etc., or there may be damage to the unit.
- Remove drum before working on unit.
- Consult factory if adding or performing any modification to the original equipment.
- Use only maintenance parts supplied or approved by the manufacturer.
- Make sure all operator safety labels are in place (p.2).

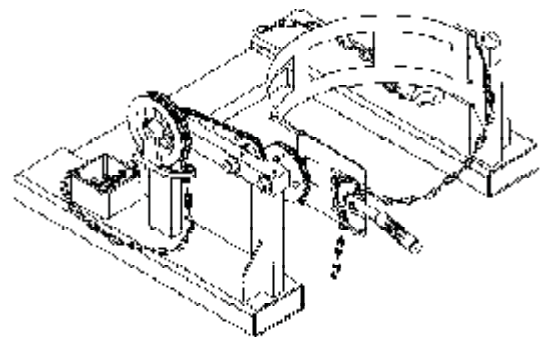
**RECEIVING INSTRUCTIONS**

Every unit is thoroughly tested and inspected prior to shipment. However, it is possible that the unit may incur damage during transit. If damage is noticed when unloading, make a note of it on the **BILL OF LADING**. Remove all packing and strapping material, then inspect the unit again for damage. **IF DAMAGE IS EVIDENT, FILE A CLAIM WITH THE CARRIER IMMEDIATELY!**

**WARRANTY**

This product is warranted for 90 DAYS from date of purchase to be free of manufacturing defects in material and workmanship.

This warranty does not cover normal wear of parts or damage resulting from any of the following: negligent use or misuse of the product, use or application contrary to installation instructions, or disassembly, repair or alteration by any person prior to authorization from a factory representative.



**FORKLIFT DRUM DUMPER  
BDCR-205 SERIES**

## Safety Instructions For The Operator

- 1.) Please read all instructions THOROUGHLY before attempting to operate your new Forklift Drum Dumper.
- 2.) The Model BDCR-205-8 has a MAXIMUM CAPACITY RATING of 800 pounds for FULL drum, and 500 pounds for HALF-FULL drum. The Model BDCR-205-15 has a MAXIMUM CAPACITY RATING of 1500 pounds for FULL drum, and 900 pounds for HALF-FULL drum. Both models are intended for lifting, moving, and pouring drums of size and type noted above. DO NOT exceed these ratings as the unsafe condition that may result could cause damage or excessive wear, or make the unit awkward to handle.
- 3.) When operating, loading, unloading, or maintaining your Forklift Drum Dumper, always use care and good judgement, have good footing and a firm hold. Keep hands and loose clothing etc., away from all moving parts. Never allow anyone to be below any part of a raised Drum Carrier/Rotator or drum. Read operating instructions before operation.

## Operating Instructions

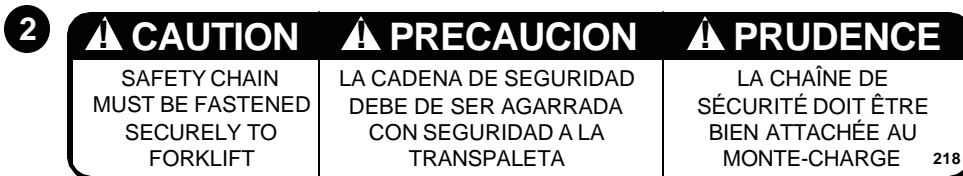
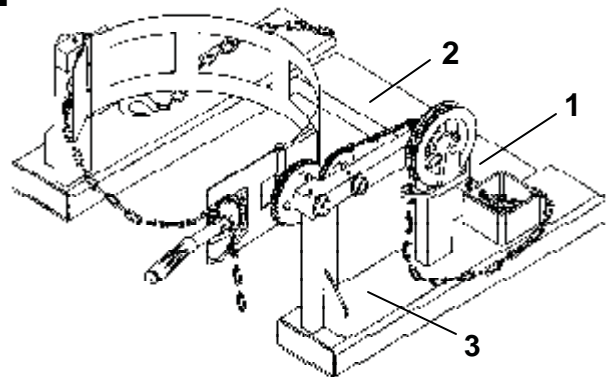
- 1.) Adjust the forks so that the inside width between the forks is 24 1/2" minimum. One fork must be locked to bed plate.
- 2.) Drive the truck forward to slip forks into fork sleeves. Attach safety chain to mast to secure Forklift Drum Dumper to forks.
- 3.) Open carrier cradle full width and hook cradle chain on stud.
- 4.) Drive truck with forks near floor level to position carrier cradle around drum. Lock drum in place by clinching chain with ratchet tightener.
- 5.) Remove control chain from box and place end of loop near operator's seat.
- 6.) Raise forks and transport drum in VERTICAL position.
- 7.) TO POUR DRUM: Pull on chain, rotating drum to angle required for emptying. For best control of drum pouring angle, pay out one side of the loop while pulling in the other.
- 8.) After emptying, rotate drum back to vertical position and drive the truck to deliver drum.

## Periodic Maintenance Instructions

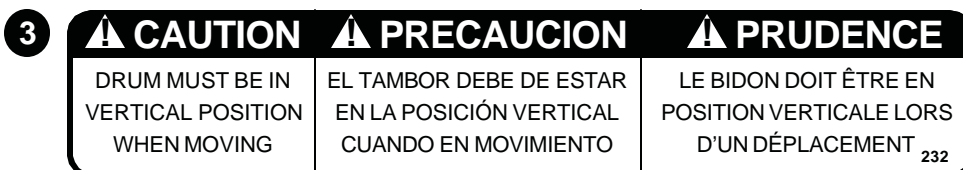
- 1.) Lubricate gear-train once a month with a good grade lube. There are three grease fittings on the gear block for Model DCR-205-8 and four grease fittings for Model DCR-205-15 and one grease fitting in the idler bearing block.
- 2.) Oil cradle hinges, ratchet, pawl, chain and other moving parts periodically.
- 3.) Periodically inspect all moving parts, framework, and contact areas for signs of wear, fatigue or loosening. Tighten, adjust or replace parts as necessary to prevent failure and maintain proper functions.

## WARNING LABEL IDENTIFICATION

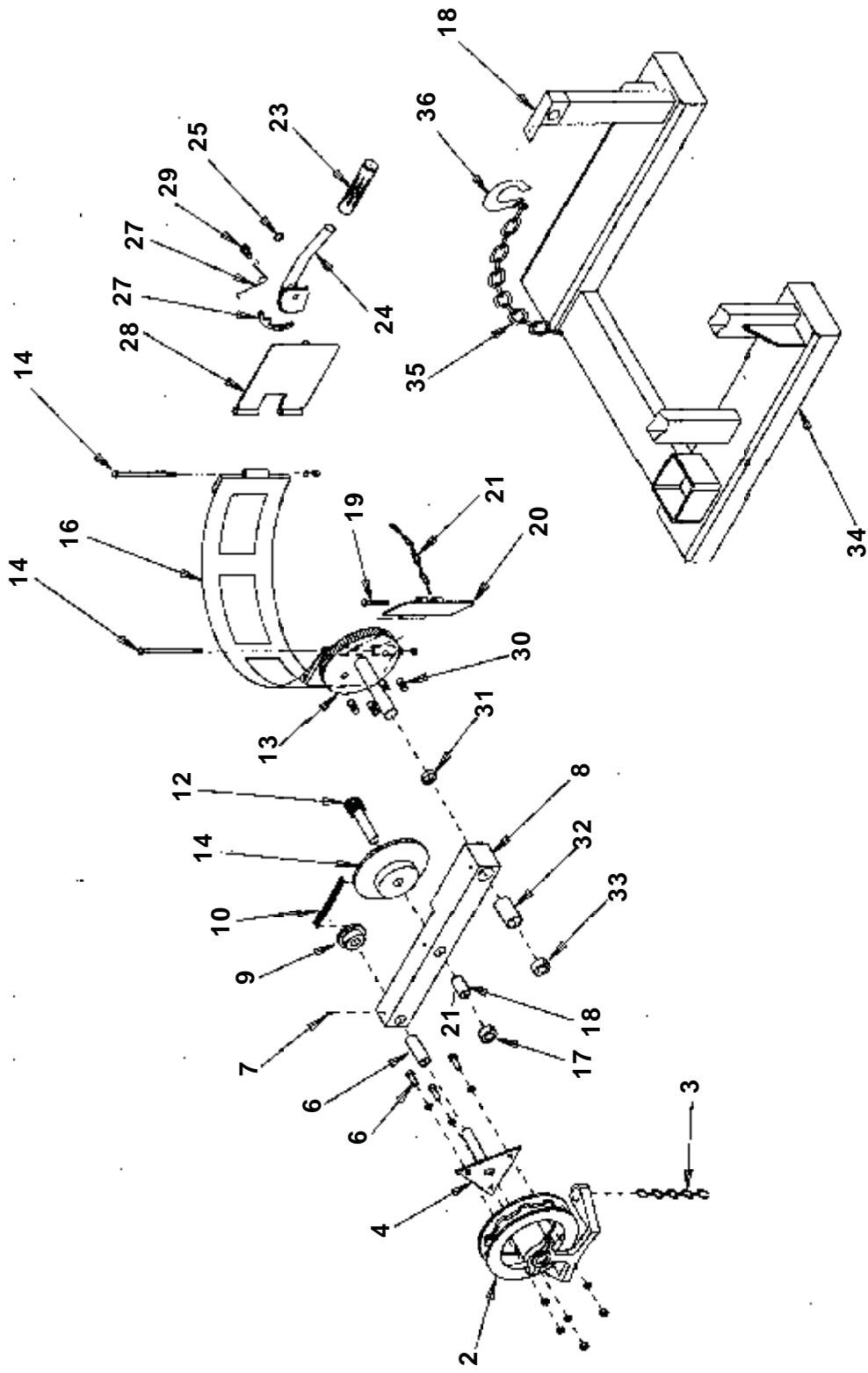
MAKE SURE ALL WARNING LABELS ARE IN PLACE!



\*Product safety signs or labels should be periodically inspected and cleaned by the product users as necessary to maintain good legibility for safe viewing distance ... ANSI 535.4 (10.21)  
 Contact manufacturer for replacement labels.



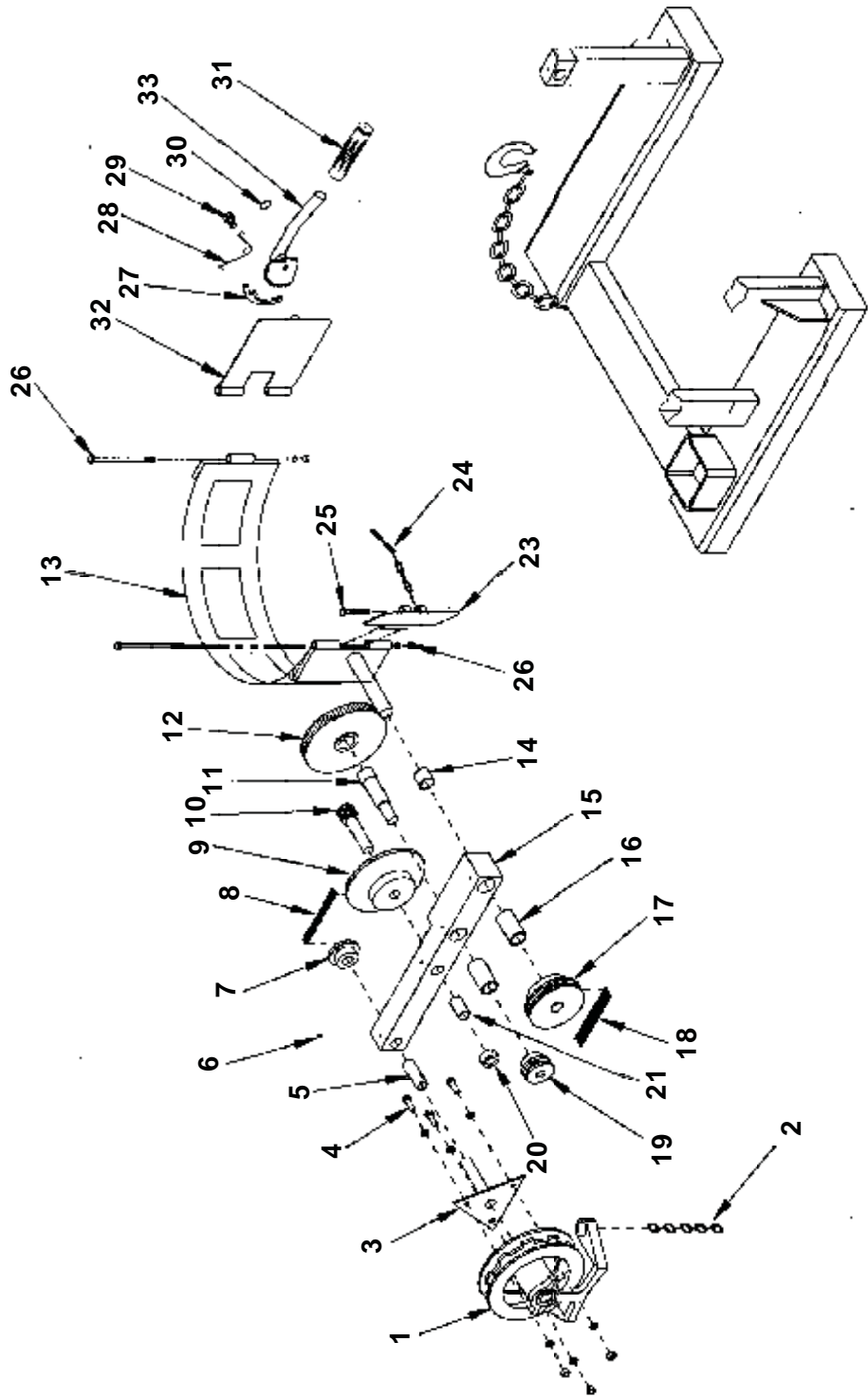
**FORKLIFT DRUM DUMPER • BDCR-205-8 & BDCR-205-15 (Type T)**



## FORKLIFT DRUM DUMPER • BDCR-205-8 & BDCR-205-15 (Type T)

| ITEM NO. | DESCRIPTION                               | ENGINEER NO. |
|----------|---|--------------|
| 1        | Hand Wheel (not shown)                    | B1A-P        |
| 2        | Chain Wheel                               | B1-P         |
| 3        | Bobbit Lock Link Chain 20 ft.             | B2-P         |
| 4        | Chain Wheel Shaft with Triangle End Bolts | B3-P         |
| 5        | Bolt & Nut 5/16-18 x 1                    | B35-P        |
| 6        | Bearing 3/4 ID x 2-1/2                    | B19-P        |
| 7        | Grease Fitting Alemite                    | B33-P        |
| 8        | Washer 3/4                                | B55-P        |
| 9        | Sprocket (12T #35)                        | B11-P        |
| 10       | Roller Chain (#35 - 3/8 pitch)            | B12-P        |
| 11       | Sprocket 36T #35                          | B13-P        |
| 12       | Pinion Gear (7T x 1" ID)                  | B14-P        |
| 13       | Spur Gear (72T x 1" ID)                   | B23-P        |
| 14       | Hinge Pin & Nuts                          | B157-P       |
| 15       | Cradle Assy. for 55 Gallon Drum           | B1048-P      |
| 16       | Bearing (Randall SH 186)                  | B7-P         |
| 17       | Collar (3/4" ID)                          | B15-P        |
| 18       | Bearing Block                             | B53-P        |
| 19       | Chain Bolt & But (3/8-16 x 2-1/2)         | B155-P       |
| 20       | Chain Hinge Plate                         | B150-P       |
| 21       | Binder Chain                              | B180-P       |
| 23       | Handle Grip                               | B136-P       |
| 24       | Ratchet                                   | B165-P       |
| 25       | Snap Ring                                 | B166-P       |
| 26       | Pawl                                      | B168-P       |
| 27       | Pawl Spring                               | B169-P       |
| 28       | Pawl & Ratchet Hinge Plate                | B159-P       |
| 29       | Pawl Shoulder Screws & Nut                | B170-P       |
| 30       | Spur Gear Screws (3/8-24)                 | B22-P        |
| 31       | Spur Gear Spacer                          | B29-P        |
| 32       | Bearing 1" ID x 2-1/2                     | B18-P        |
| 33       | Collar (1" ID)                            | B16-P        |
| 34       | Base Frame                                | BDCR-205-FB  |
| 35       | Safety Chain                              | BDCR-205-SC  |
| 36       | Safety Hook                               | BDCR-205-SH  |

**FORKLIFT DRUM DUMPER • BDCR-205-8 & BDCR-205-15 (Type C)**



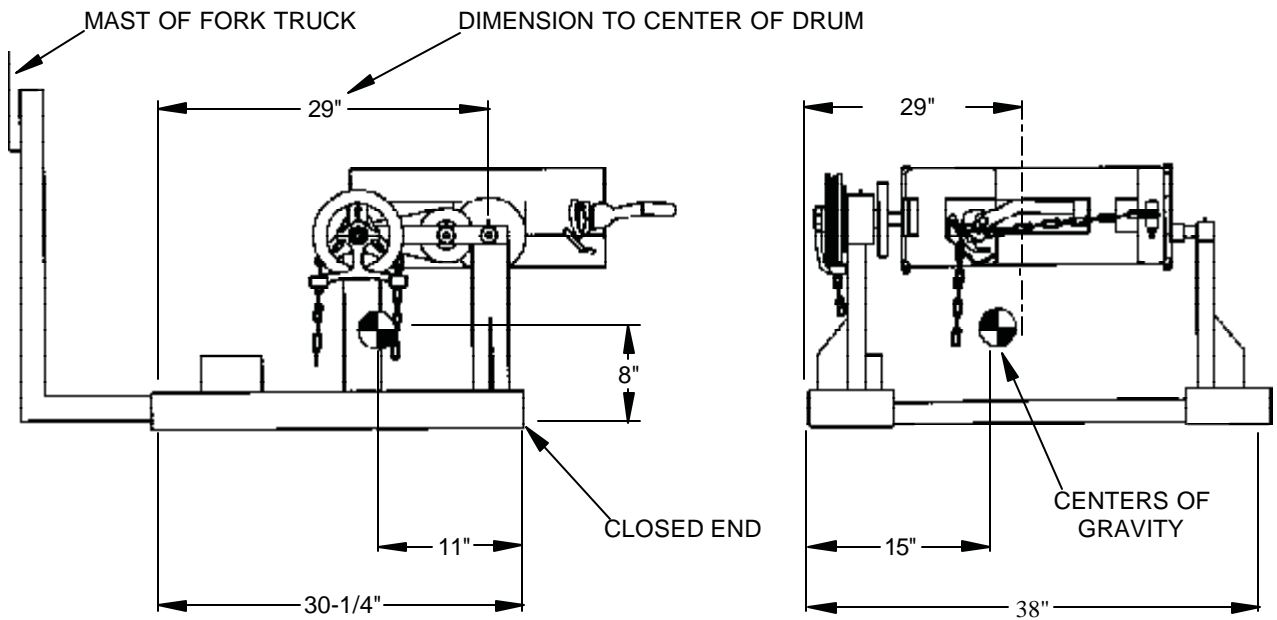
## FORKLIFT DRUM DUMPER • BDCR-205-8 & BDCR-205-15 (Type T)

| ITEM NO. | DESCRIPTION                         | ENGINEER NO. |
|----------|-------------------------------------|--------------|
| 1        | Chain Wheel                         | B09-042-011  |
| 2        | #1/0 Bobbit Lock Link Chain 20 ft.  | B09-145-007  |
| 3        | Chain Wheel Shaft with Triangle     | B09-516-059  |
| 4        | Bolt & Nut 5/16 - 18 x 1            | B35-P        |
| 5        | Bearing 3/4 ID x 2-1/2 Lg.          | B01-111-048  |
| 6        | Grease Fitting Alemite              | B33-P        |
| 7        | Sprocket (12T #35)                  | B09-042-004  |
| 8        | Roller Chain (#35 - 3/8 pitch)      | B09-042-006  |
| 9        | Sprocket (36T)                      | B09-042-003  |
| 10       | Pinion Gear (11 Tooth with Key)     | B09-042-007  |
| 11       | Shaft, 4-5/8" Long                  | B09-112-013  |
| 12       | Spur Gear (72 T x 1-1/8" Lg.)       | B09-042-008  |
| 13       | Cradle Assembly                     | B09-538-002  |
| 14       | Spacer, 1.03 ID x 1-1/8" Lg.)       | B09-113-003  |
| 15       | Base Frame                          | B09-514-066  |
| 16       | Bearing 1" ID x 2-1/4"              | B01-111-047  |
| 17       | Double Sprocket 24T                 | B09-042-001  |
| 18       | Double Sprocket chain               | B09-042-005  |
| 19       | Double Sprocket 12T                 | B09-042-002  |
| 20       | Bearing                             | B01-111-048  |
| 21       | Collar                              | B09-145-001  |
| 23       | Chain Hinge Plate                   | B09-516-007  |
| 24       | Binder Chain                        | B09-145-008  |
| 25       | Chain Bolt & Nut (3/8 - 16 x 2-1/2) | B155-P       |
| 26       | Hinge Pin & Nuts                    | B157-P       |
| 27       | Pawl                                | B09-042-012  |
| 28       | Pawl Spring                         | B09-146-001  |
| 29       | Pawl Shoulder Screws & Nut          | B170-P       |
| 30       | Snap Ring                           | B166-P       |
| 31       | Handle Grip                         | B09-025-016  |
| 32       | Ratchet Plate                       | B09-516-012  |
| 33       | Ratchet Lever                       | B09-042-014  |

n/a Not Available

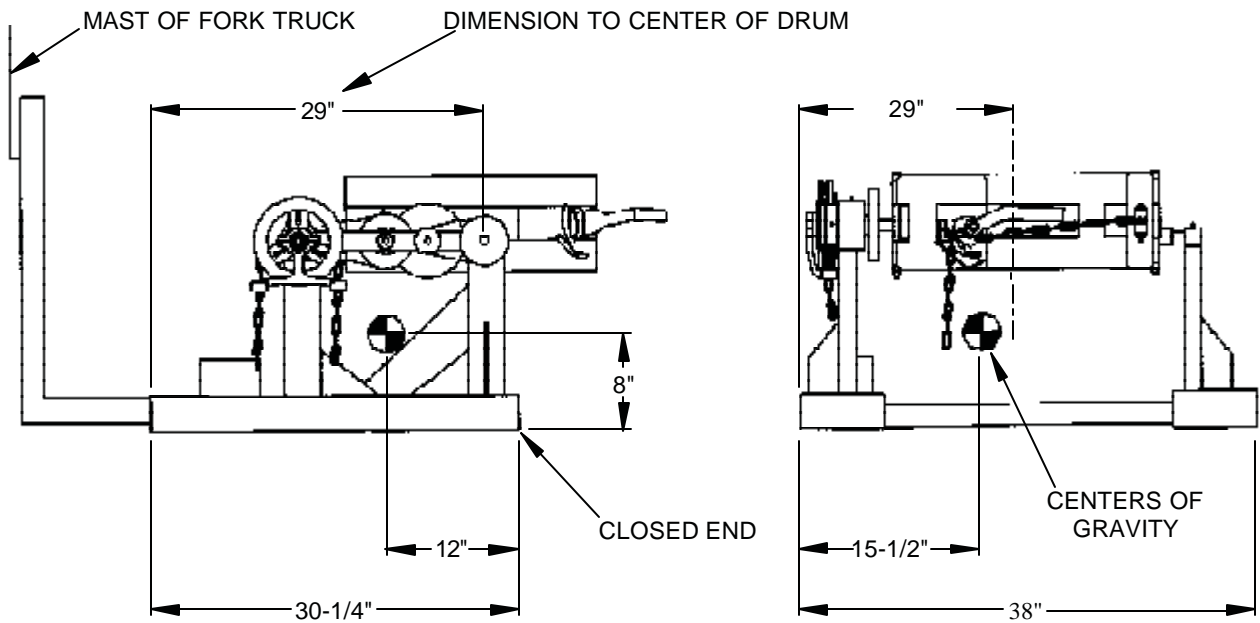
# LOCATION OF CENTER OF GRAVITY

## MODEL BDCR-205-8



CAPACITY: 800 LBS.  
TOTAL 160 LBS. LOST LOAD  
FORK TUBES: 7-1/4" WIDE BY 2-1/4" HIGH

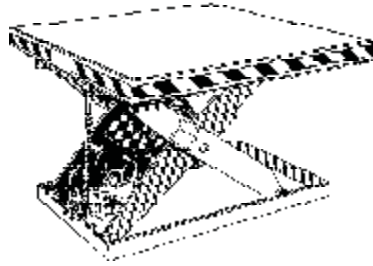
## MODEL BDCR-205-15



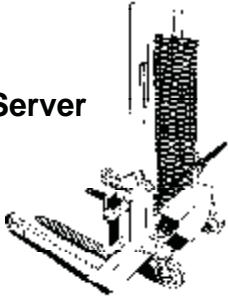
CAPACITY: 1500 LBS.  
TOTAL 225 LBS. LOST LOAD  
FORK TUBES: 7-1/4" WIDE BY 2-1/4" HIGH

# Material Handling Problem Solvers

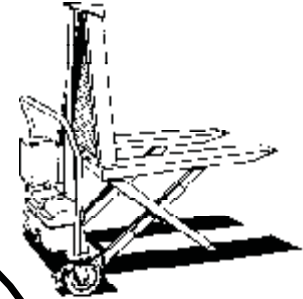
Scissor Lift Table



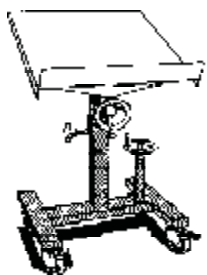
Pallet Server



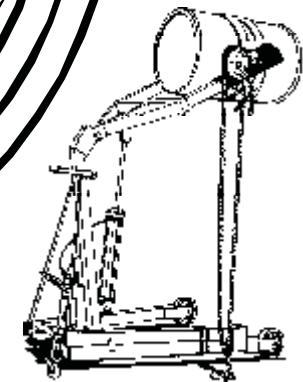
High Rise Lift



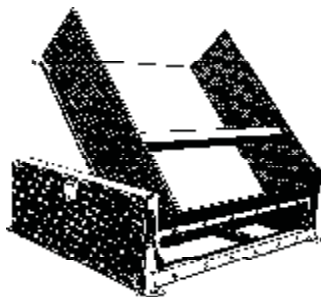
Time is money.  
Increased productivity  
equals greater profitability,  
cost minimization and worker  
compatibility. Ergonomic  
products will assist you  
with your production and  
safety goals.



Mobile Lift &  
Tilt  
Work Stand



Drum Carrier/Rotator



Ground Lift Tilter