

# Instruction Manual

Powered Drive and Powered Lift Hydraulic Scissor Carts  
Model: BCART-1500D-DC-CTD



**BEACON**<sup>®</sup> 

**BEACON INDUSTRIES, INC.**

12300 Old Tesson Rd.

St. Louis, MO 63128-2247 USA

OFFICE: 314-487-7600 FAX: 314-487-0100

# Model: BCART-1500D-DC-CTD

## Powered Drive and Powered Lift Hydraulic Scissor Carts

### Instruction Manual

READ THIS OPERATION MANUAL COMPLETELY BEFORE USING. THOROUGHLY UNDERSTAND AND FOLLOW ALL SAFETY INSTRUCTIONS. IF THIS IS LOST, PLEASE CONTACT YOUR LOCAL SUPPLIER FOR A NEW COPY. IF THE WARNING/CAUTION DECAL ON THE UNIT IS LOST, PLEASE CONTACT YOUR LOCAL SUPPLIER FOR A NEW COPY.

Note: On this manual, WARNING means the danger which can lead death or serious injury. CAUTION means the danger which can lead slight injury or property damage.



- Never LIFT & LOWER the self-propelled electric lift table when Driving
- Only be driven when lift table platform at the lowest position.

## 1. Operation Safety Regulations

### 1.1 The Operator Requirements

This self-propelled lift table must be operated by a trained person who can demonstrate moving and operating the lift table to the user and can instruct vividly the user how to operate.

### 1.2 Rights, Obligations and Responsibilities of the Operator

The operator must fully understand his rights and obligations and has received the training of the self-propelled electric lift table operation. At the same time, the operator must master the related descriptions in the Instructions Manual. In the operation of walking control truck, the operator should wear safety boots.

### 1.3 Forbidden use by unauthorized persons

During operation, the operator must be responsible for the truck and prevent unauthorized persons in driving or operating the truck. The self-propelled electric lift table is strictly forbidden to lift or carry persons.

### 1.4 Failure and fault

In case of any failure or fault, please notify the administrator immediately. In case that the self-propelled electric lift table cannot work safely (such as wheel worn-out or brake fault), please stop using the lift table until they are properly repaired.

### 1.5 Repair

Without professional training and specific authorization, the operator is forbidden to repair or change any part of the truck. Any change of installation position of switches and safety devices is strictly forbidden by the operator to avoid efficiency decrease of the lift table.



All spare parts from original manufacturer are qualified by Quality Assurance Authorities. To ensure the safety and reliability of product operation, only spare parts from manufacturer can be applied. The parts replaced, including oils and fuels, must be disposed according to related environmental protection regulations.

### **1.6 Danger area**

Danger area refers to the area where the lift table or its lifting device (such as fork or attachment) is working or lifting, which brings potential dangerous factors to persons or the area for load transportation. Generally, the range of danger area extends to the point of load lowering or truck attachment lowering.

Unauthorized persons must be kept away from danger area.

### **1.7 Working in hazardous environments**

A self-propelled electric lift table operating in an area where there is a risk, or in any other high-risk area, should be specially equipped for the purpose.

### **1.8 Safety devices and warning signs**

Enough importance should be attached to safety devices, warning signs and warning notices introduced above in Instructions Manual.

### **1.9 Driving in public areas**

The electric lift table should not be driven on public roads outside a specific area.

### **1.10 Distance between vehicles**

Remember that the lift table in front of you may brake suddenly therefore keep a reasonable distance.

### **1.11 Operation management**

Driving speed must be applicable for local conditions. Low speed is requested for curve driving, narrow aisle passing, swing door passing or driving in blocked field. The operator must be capable to measure the braking distance to front area by sight and control the lift table continuously. Sudden brake (except in emergency), quick U-turn and overtaking in a blocked field are prohibited.

### **1.12 Visibility**

The operator must focus on the driving direction to ensure clear sight for the road conditions ahead. In case the carried cargo interrupts the sight, reverse driving is requested. If it doesn't help in this way, there must be another person walking ahead of lift table to give guidance and warning.

### **1.13 Passing a slope**

The permitted slope in a narrow aisle for lift table passing must be clean and anti-slip. Driving on slopes stipulated in technical specifications (instructions manual) is permitted. The carried cargo must face to upward direction of slope. U-turning or parking this lift table on a slope is prohibited. On passing a slope, driving is requested at low speed. At the same time, the operator must be always prepared to brake and stop.

### **1.14 Floor Load**

It is advisable to carefully check notices and directions about the maximum floor load or maximum wheel pressure to ensure that this is not exceeded.

### **1.15 Transports**

The self-propelled electric lift table will only be driven with the height of lift table platform to the lowest position except when placing or removing a load.

#### **1.16 Load characteristics**

The cargo should be carried correctly, safely and reliably. Carrying a cargo with stacking-height exceeding top of platform or protection shield is strictly forbidden.

## **2. DAILY INSPECTION**

Daily inspection is effective to find the malfunction or faulty on the lifter. Check the lifter on the following points before the operation.

|                |
|----------------|
| <b>CAUTION</b> |
|----------------|

|   |
|---|
| <b>DO NOT use lifter if any malfunction or faulty is found.</b> |
|---|

- (1) Check scratch, bending or crack on the lifter.
- (2) Check smooth movement of the wheels.
- (3) Check if there is oil leakage.
- (4) Check vertical creep of table.
- (5) Check the function of brake.
- (6) Check if all the bolts and nuts are tightened firmly.
- (7) Check all the electric elements-battery indicator, horn, brake system whether to work normally



### 3. PARTS



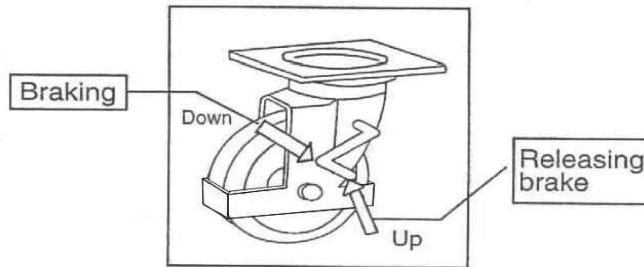
## 4. OPERATING LIFT TABLE

How to use the brake.

|  |
|--|
| <b>CAUTION</b>   |
| Brake lift table when not moving it in order to prevent sudden movement. |

The brake is equipped with the swivel caster on the right side. (Only for ESF model), ESM model is equipped with fixed Support Brake unit.

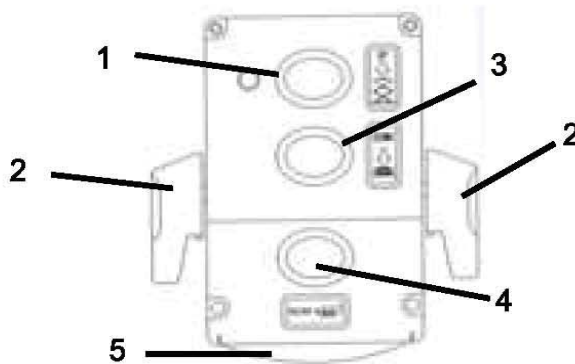
- (1) Braking the wheel, press the brake pedal.
- (2) Releasing the brake, lift up the brake pedal.



## 5. LIFTING UP FORKS

|   |
|---|
| <b>CAUTION</b>  |
| 1. DO NOT overload lifter. Stay within its rated capacity.                  |
| 2. Prolonged continuous working might cause damage of hydraulic power pack. |
| 3. Step operation if temperature of hydraulic oil is too high.              |

Push the button "UP" and the table lift up.



- |                       |                          |
|-----------------------|--------------------------|
| 1-Switch for lifting  | 2-FWD/BWD Turning Button |
| 3-Switch for lowering | 4-Horn                   |
| 5-Reverse Button      |                          |

## 6. LOWERING TABLE

|  |
|--|
| <b>CAUTION</b>   |
| DO NOT lower table with load too fast and stop suddenly. Impact load could be created and lifter could be damaged. |

Push the button DOWN.

## 7.MOVING THE LIFTER

|  |
|--|
| <b>WARNING</b>   |
| DO NOT move lifter on slope or inclined surface, otherwise lifter become uncontrollable and create danger. |

- (1) Make the load stable to prevent it to fall.
- (2) Lower the table down.
- (3) Release the brake and drive the lifter.

|   |
|---|
| <b>CAUTION</b>  |
| KEEP watching the condition of load. Stop operating lifter if load become unstable. |

## 8.CHARGING THE BATTERY

- (1) Check the quantity of Battery fluid. If it is insufficient, add the battery solution according to battery operation manual.
- (2) Disconnect the battery socket.
- (3) Connect the charging port of battery socket to the battery charger.

## 9.REGULAR INSPECTION

Perform the regular inspection for the safety operation.

- (1) Check the items expressed in daily inspection (daily).
- (2) Lubricate with grease the guides where roller moves. Also, lubricate the grease nipples. (Every month)
- (3) Lubricate all the pivoting points and axles. (Every 6 months)
- (4) Replace the hydraulic oil for the first time: Accumulated working ten hours'
- (5) Replace the hydraulic oil. (Every 12 months)

## 10.TROUBLE SHOOTING

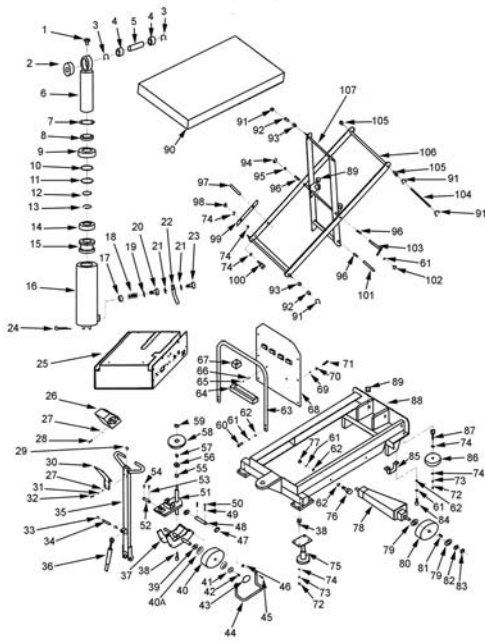
| TROUBLE  | CAUSE                                     | REPAIR   |
|--|---|--|
| Platform do not rise while motor does not run. | 1.Faulty wiring.                          | 1.Check the wiring referring to the actual wiring diagram. |
|  | 2.Battery socket is disconnected          | 2.Connect the battery socket.                              |
|  | 3.Battery charge is insufficient.         | 3.Charge the battery.                                      |
| Platform do not rise while motor runs.         | 1.Faulty adjustment of relief valve.      | 1.Adjust relief valve again.                               |
|  | 2.Faulty hydraulic pump.                  | 2.Replace power pack.                                      |
|  | 3.Shortage of hydraulic oil.              | 3.Add oil.   |
| Vertical creep of table.                       | 1.Oil leakage in power pack.              | 1.Replace lowering valve.                                  |
|  | 2.Oil leakage form hydraulic circuit.     | 2.Check hydraulic circuit and repair.                      |
| Oil leakage from cylinder.                     | Faulty sealing.                           | Replace sealing.   |
| Oil leakage from piping or joint.              | Insufficient tightening or seal in valid. | Tighten joint again or Replace seal.                       |
| Oil leakage from air breather.                 | Excessive quantity of oil.                | Reduce oil quantity.                                       |

## 11. SPECIFICATIONS

| <b>Model</b>                                | <b>BCART-1000-DC-CTD</b>                    | <b>BCART-1000D-DC-CTD</b>                  | <b>BCART-1500-DC-CTD</b>                 | <b>BCART-1500D-DC-CTD</b>                  |
|---|---|--|--|--|
| <b>Capacity</b>                             | 1,000 lbs                                   | 1,000 lbs                                  | 1,500 lbs                                | 1,500 lbs                                  |
| <b>Platform Size (LxW)</b>                  | 40 x 24"                                    | 40 x 24"                                   | 40 x 24"                                 | 40 x 24"                                   |
| <b>Platform Height (Max/Min)</b>            | 18 <sup>1/8</sup> to 42 <sup>3/8</sup> "    | 20 <sup>1/2</sup> to 72 <sup>13/16</sup> " | 18 <sup>1/8</sup> to 42 <sup>3/8</sup> " | 20 <sup>1/2</sup> to 72 <sup>13/16</sup> " |
| <b>Lifting Cycle</b>                        | 45  | 40   | 45                                       | 40   |
| <b>Time (Lifting/Lowering)<br/>Unloaded</b> | 12.50/23.22 secs                            | 16.65/35.53 secs                           | 12.50/23.22 secs                         | 16.65/35.87 secs.                          |
| <b>Time (Lifting/Lowering)<br/>Loaded</b>   | 14.47/15.19 secs                            | 23.60/19.22 secs                           | 14.47/15.19 secs                         | 23.60/19.22 secs.                          |
| <b>Steering Wheel (dia)</b>                 | 7 <sup>7/8</sup> "                          | 7 <sup>7/8</sup> "                         | 7 <sup>7/8</sup> "                       | 7 <sup>7/8</sup> "                         |
| <b>Drive wheel (dia.)</b>                   | 7 <sup>7/8</sup> "                          | 7 <sup>7/8</sup> "                         | 7 <sup>7/8</sup> "                       | 7 <sup>7/8</sup> "                         |
| <b>Overall Size (LxWxH)</b>                 | 55 <sup>1/8</sup> x 26 <sup>3/8</sup> x 46" |  |  |  |
| <b>Net Weight</b>                           | 612 lbs                                     | 727 lbs                                    | 612 lbs                                  | 727 lbs                                    |



# PARTS DRAWING & PARTS LIST



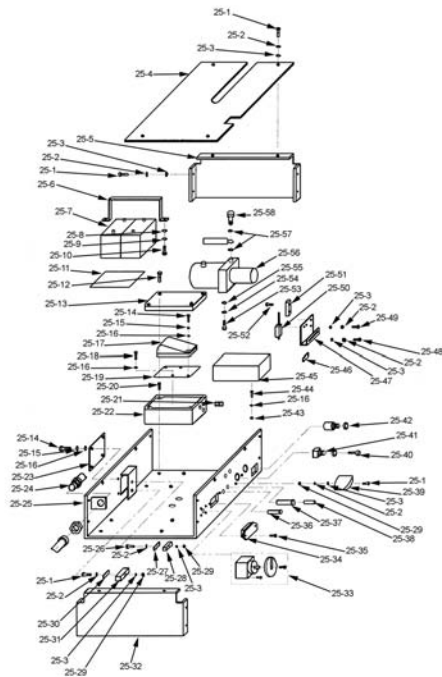
## BCART-1500-DC-CTD

| NO.  | PART NUMBER        | DESCRIPTION                  | QTY. |
|------|--------------------|------------------------------|------|
| CYL  | C-1500-DC-CTD-CYL  | ASSEMBLY, CYLINDER           | 1    |
| HDLS | C-1500-DC-CTD-HDLS | SWICH, LIMIT                 | 1    |
| SWA  | C-1500-DC-CTD-SWA  | WHEEL, STEER, ASSEMBLY       | 1    |
| DM   | C-1500-DC-CTD-DM   | MOTOR, DRIVE                 | 1    |
| 1    | C-1500-DC-CTD-1    | ZERK, GREASE                 | 1    |
| 2    | C-1500-DC-CTD-2    | BEARING                      | 2    |
| 3    | C-1500-DC-CTD-3    | PIN, CYLINDER                | 1    |
| 4    | C-1500-DC-CTD-4    | WASHER, LOCK - M8            | 1    |
| 5    | C-1500-DC-CTD-5    | BOLT, SOCKET HEAD            | 1    |
| 6    | C-1500-DC-CTD-6    | PISTON, CYLINDER             | 1    |
| 7    | C-1500-DC-CTD-7    | RING, RETAINING              | 1    |
| 8    | C-1500-DC-CTD-8    | WIPER                        | 1    |
| 9    | C-1500-DC-CTD-9    | NUT, GLAND                   | 1    |
| 10   | C-1500-DC-CTD-10   | RING, SPIRAL                 | 1    |
| 11   | C-1500-DC-CTD-11   | RING, GUIDE                  | 1    |
| 12   | C-1500-DC-CTD-12   | RING, RETAINING              | 1    |
| 13   | C-1500-DC-CTD-13   | SEAL                         | 1    |
| 14   | C-1500-DC-CTD-14   | PISTON, GUIDE                | 1    |
| 15   | C-1500-DC-CTD-15   | HOUSING, CYLINDER            | 1    |
| 16   | C-1500-DC-CTD-16   | HOSE, OIL                    | 1    |
| 17   | C-1500-DC-CTD-17   | O-RING                       | 1    |
| 18   | C-1500-DC-CTD-18   | CONNECTOR, THREADED          | 1    |
| 19   | C-1500-DC-CTD-19   | WASHER, RUBBER COATED        | 1    |
| 20   | C-1500-DC-CTD-20   | PIN, COTTER                  | 1    |
| 27   | 40354              | WASHER, FLAT - M5            | 6    |
| 28   | C-1500-DC-CTD-28   | SCREW, PHILLIPS HEAD MACHINE | 2    |
| 29   | C-1500-DC-CTD-29   | PLUG, RUBBER                 | 4    |
| * 30 | C-1500-DC-CTD-30   | PLATE, HANDLE MOUNTING       | 1    |
| 31   | C-1500-DC-CTD-31   | WASHER, LOCK - M5            | 4    |
| 32   | C-1500-DC-CTD-32   | SCREW, PHILLIPS HEAD MACHINE | 4    |
| 33   | C-1500-DC-CTD-33   | RING, RETAINING              | 2    |
| 34   | C-1500-DC-CTD-34   | PIN                          | 1    |
| 35   | C-1500-DC-CTD-35   | HANDLE                       | 1    |
| 36   | C-1500-DC-CTD-36   | SHOCK, GAS                   | 1    |
| * 37 | C-1500-DC-CTD-37   | WELDMENT, HANDLE             | 1    |
| 38   | C-1500-DC-CTD-38   | BOLT, HEX HEAD               | 1    |
| 39   | C-1500-DC-CTD-39   | WASHER                       | 2    |
| 40   | C-1500-DC-CTD-40   | WHEEL, STEER                 | 2    |
| 40A  | 6204-2RS           | BEARING, BALL                | 4    |
| 41   | C-1500-DC-CTD-41   | WASHER, FLAT - M8            | 2    |
| 42   | C-1500-DC-CTD-42   | BOLT, HEX HEAD               | 2    |
| 43   | C-1500-DC-CTD-43   | CAP, END                     | 2    |
| 44   | C-1500-DC-CTD-44   | GUARD, WHEEL                 | 4    |
| 45   | C-1500-DC-CTD-45   | BOLT, SOCKET HEAD            | 2    |
| 46   | C-1500-DC-CTD-46   | NUT, NYLON LOCK - M6         | 2    |
| 47   | C-1500-DC-CTD-47   | WASHER                       | 2    |
| 48   | C-1500-DC-CTD-48   | PIN                          | 1    |
| 49   | C-1500-DC-CTD-49   | PIN, COTTER                  | 2    |
| 50   | C-1500-DC-CTD-50   | PIN, SPRING - M4 X 30        | 2    |
| * 51 | C-1500-DC-CTD-51   | WELDMENT, SWIVEL             | 1    |
| 52   | C-1500-DC-CTD-52   | PIN                          | 1    |
| 53   | C-1500-DC-CTD-53   | PIN, COTTER                  | 2    |
| 54   | C-1500-DC-CTD-54   | SPRING PIN                   | 2    |
| 55   | C-1500-DC-CTD-55   | BUSHING                      | 1    |
| 56   | C-1500-DC-CTD-56   | BEARING                      | 1    |
| 57   | C-1500-DC-CTD-57   | BUSHING                      | 1    |
| 58   | C-1500-DC-CTD-58   | PLATE, TOP                   | 1    |
| 59   | C-1500-DC-CTD-59   | NUT, NYLON LOCK - M16        | 1    |
| 60   | C-1500-DC-CTD-60   | SCREW, PHILLIPS HEAD MACHINE | 2    |
| 61   | C-1500-DC-CTD-61   | WASHER, LOCK - M8            | 8    |
| 62   | C-1500-DC-CTD-62   | WASHER, FLAT - M8            | 8    |
| 63   | C-1500-DC-CTD-63   | FRAME, MOUNTING              | 1    |
| 64   | C-1500-DC-CTD-64   | BOX, STORAGE                 | 1    |
| 65   | C-1500-DC-CTD-65   | NUT, HEX                     | 2    |

|     |                    |                              |    |
|-----|--------------------|------------------------------|----|
| 66  | C-1500-DC-CTD-66   | SCREW, PHILLIPS HEAD MACHINE | 2  |
| 67  | C-1500-DC-CTD-67   | BOX, PLASTIC                 | 4  |
| 68  | C-1500-DC-CTD-68   | PLATE, MOUNTING              | 1  |
| 69  | C-1500-DC-CTD-69   | WASHER, FLAT                 | 6  |
| 70  | C-1500-DC-CTD-70   | WASHER, LOCK                 | 6  |
| 71  | C-1500-DC-CTD-71   | SCREW, PHILLIPS HEAD MACHINE | 6  |
| 72  | C-1500-DC-CTD-72   | NUT, HEX - M10               | 4  |
| 73  | C-1500-DC-CTD-73   | WASHER, LOCK - M10           | 4  |
| 74  | C-1500-DC-CTD-74   | WASHER, FLAT - M10           | 12 |
| 75  | C-1500-DC-CTD-75   | BRAKE, FOOT                  | 1  |
| 76  | C-1500-DC-CTD-76   | BOLT, SOCKET HEAD            | 1  |
| 77  | C-1500-DC-CTD-77   | NUT, HEX - M8                | 1  |
| 78  | C-1500-DC-CTD-78   | ASSEMBLY, DRIVE WHEEL        | 1  |
| 79  | C-1500-DC-CTD-79   | SPACER                       | 4  |
| 80  | C-1500-DC-CTD-80   | WHEEL, DRIVE                 | 2  |
| 81  | C-1500-DC-CTD-81   | WAY, KEY                     | 2  |
| 82  | C-1500-DC-CTD-82   | WASHER, FLAT - M14           | 2  |
| 83  | C-1500-DC-CTD-83   | NUT, NYLON LOCK              | 2  |
| 84  | C-1500-DC-CTD-84   | BOLT, SOCKET HEAD            | 4  |
| 85  | C-1500-DC-CTD-85   | BRACKET, MOUNTING            | 2  |
| 86  | C-1500-DC-CTD-86   | WHEEL, BUMPER                | 2  |
| 87  | C-1500-DC-CTD-87   | BOLT, HEX HEAD               | 4  |
| 88  | C-1500-DC-CTD-88   | FRAME                        | 1  |
| 89  | C-1500-D-DC-CTD-89 | PAD, RUBBER                  | 2  |
| 90  | C-1500-DC-CTD-90   | DECK                         | 1  |
| 91  | C-1500-DC-CTD-91   | RING, RETAINING              | 6  |
| 92  | C-1500-DC-CTD-92   | ROLLER, FRAME                | 4  |
| 93  | C-1500-DC-CTD-93   | BUSHING                      | 4  |
| 94  | C-1500-DC-CTD-94   | NUT, NYLON LOCK              | 1  |
| 95  | C-1500-DC-CTD-95   | WASHER, FLAT                 | 1  |
| 96  | C-1500-DC-CTD-96   | BUSHING                      | 2  |
| 97  | C-1500-DC-CTD-97   | PIN, SPRING - M8 X 30        | 2  |
| 98  | C-1500-DC-CTD-98   | NUT, NYLON LOCK              | 2  |
| 99  | C-1500-DC-CTD-99   | STOP, MAINTANANCE            | 2  |
| 100 | C-1500-DC-CTD-100  | BOLT, HEX HEAD               | 2  |
| 101 | C-1500-DC-CTD-101  | PIN                          | 1  |
| 102 | C-1500-DC-CTD-102  | BOLT, SOCKET HEAD            | 1  |
| 103 | C-1500-DC-CTD-103  | PIN                          | 1  |
| 104 | C-1500-DC-CTD-104  | PIN                          | 1  |
| 105 | C-1500-DC-CTD-105  | BUSHING                      | 2  |
| 106 | C-1500-DC-CTD-106  | SCISSORS - EXTERNAL          | 1  |
| 107 | C-1500-DC-CTD-107  | SCISSORS - INTERNAL          | 1  |
| 108 | C-1500-DC-CTD-108  | BUSHING                      | 1  |

\* Item is not available for sale. However, it may be available as part of a kit or assembly.

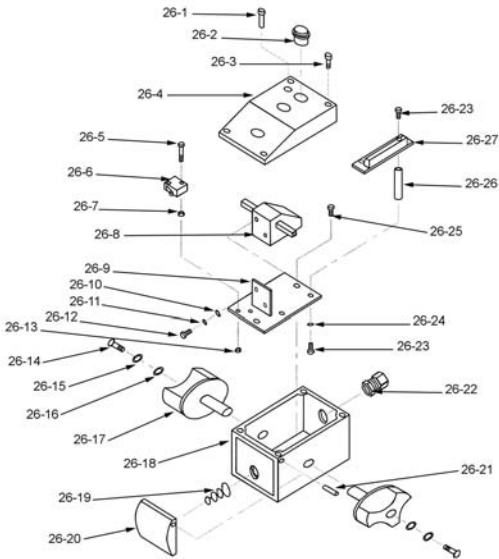
## BCART-1500-DC-CTD-POWER UNIT



| NO.     | PART NUMBER         | DESCRIPTION                       | QTY. |
|---------|---------------------|-----------------------------------|------|
| MES     | C-1500-D-DC-CTD-MES | E-STOP, MUSHROOM                  | 1    |
| 25      | C-1500-DC-CTD-25    | ASSEMBLY, HYDRAULIC PUMP          | 1    |
| 25-1    | C-1500-DC-CTD-25-1  | BOLT, SOCKET HEAD                 | 4    |
| 25-2    | C-1500-DC-CTD-25-2  | WASHER, LOCK - M5                 | 6    |
| 25-3    | C-1500-DC-CTD-25-3  | WASHER, FLAT - M5                 | 6    |
| 25-4    | C-1500-DC-CTD-25-4  | COVER, BATTERY                    | 1    |
| 25-5    | C-1500-DC-CTD-25-5  | PANEL, END                        | 1    |
| 25-6    | C-1500-DC-CTD-25-6  | BRACKET, BATTERY                  | 1    |
| 25-7    | C-1500-DC-CTD-25-7  | BATTERY                           | 1    |
| 25-8    | C-1500-DC-CTD-25-8  | WASHER, FLAT - M8                 | 1    |
| 25-9    | C-1500-DC-CTD-25-9  | WASHER, LOCK - M8                 | 1    |
| 25-10   | C-1500-DC-CTD-25-10 | BOLT, SOCKET HEAD                 | 1    |
| 25-11   | C-1500-DC-CTD-25-11 | PLATE, BATTERY                    | 1    |
| 25-12   | C-1500-DC-CTD-25-12 | BOLT                              | 1    |
| 25-13   | C-1500-DC-CTD-25-13 | COVER, PLATE                      | 1    |
| 25-14   | C-1500-DC-CTD-25-14 | SCREW, PHILLIPS HEAD MACHINE      | 2    |
| 25-15   | C-1500-DC-CTD-25-15 | WASHER, LOCK                      | 2    |
| 25-16   | C-1500-DC-CTD-25-16 | WASHER, FLAT                      | 3    |
| 25-17   | C-1500-DC-CTD-25-17 | CONTROLLER                        | 1    |
| 25-18   | C-1500-DC-CTD-25-18 | SCREW, PHILLIPS HEAD MACHINE      | 1    |
| 25-19   | C-1500-DC-CTD-25-19 | PLATE, MOUNTING                   | 1    |
| 25-20   | C-1500-DC-CTD-25-20 | SCREW, PHILLIPS HEAD MACHINE      | 1    |
| 25-21   | C-1500-DC-CTD-25-21 | JOINT, WIRE                       | 1    |
| 25-22   | C-1500-DC-CTD-25-22 | BOX, CONTROLLER                   | 1    |
| * 25-23 | C-1500-DC-CTD-25-23 | PLATE, COVER                      | 1    |
| 25-24   | C-1500-DC-CTD-25-24 | CABLE                             | 1    |
| 25-25   | C-1500-DC-CTD-25-25 | TRAY, BATTERY                     | 1    |
| 25-26   | C-1500-DC-CTD-25-26 | SCREW, PHILLIPS FLAT HEAD MACHINE | 1    |
| 25-27   | C-1500-DC-CTD-25-27 | FUSE                              | 1    |
| 25-28   | C-1500-DC-CTD-25-28 | HOLDER, FUSE - 4A                 | 1    |
| 25-29   | C-1500-DC-CTD-25-29 | NUT, NYLON LOCK - M5              | 3    |
| 25-30   | C-1500-DC-CTD-25-30 | FUSE                              | 1    |
| 25-31   | C-1500-DC-CTD-25-31 | HOLDER, FUSE                      | 1    |
| 25-32   | C-1500-DC-CTD-25-32 | PANEL, END                        | 1    |
| 25-33   | C-1500-DC-CTD-25-33 | SWITCH, ON / OFF                  | 1    |
| 25-34   | C-1500-DC-CTD-25-34 | INDICATOR, BATTERY CHARGE         | 1    |
| 25-35   | C-1500-DC-CTD-25-35 | SCREW, PHILLIPS HEAD MACHINE      | 1    |
| 25-36   | C-1500-DC-CTD-25-36 | LIGHT                             | 1    |
| 25-37   | C-1500-DC-CTD-25-37 | HOLDER, FUSE - 2A                 | 1    |
| 25-38   | C-1500-DC-CTD-25-38 | FUSE - 2A                         | 1    |
| 25-39   | C-1500-DC-CTD-25-39 | COVER, PROTECTIVE                 | 1    |
| 25-40   | C-1500-DC-CTD-25-40 | SWITCH, KEY                       | 1    |
| 25-41   | C-1500-DC-CTD-25-41 | KEY                               | 1    |
| 25-42   | C-1500-DC-CTD-25-42 | HORN                              | 1    |
| 25-43   | C-1500-DC-CTD-25-43 | NUT, HEX                          | 1    |
| 25-44   | C-1500-DC-CTD-25-44 | BOLT, SOCKET HEAD                 | 1    |
| 25-45   | C-1500-DC-CTD-25-45 | CHARGER, BATTERY                  | 1    |
| 25-46   | C-1500-DC-CTD-25-46 | BRACKET                           | 1    |
| 25-47   | C-1500-DC-CTD-25-47 | BRACKET, LIMIT SWITCH             | 1    |
| 25-48   | C-1500-DC-CTD-25-48 | BOLT, SOCKET HEAD                 | 1    |
| 25-49   | C-1500-DC-CTD-25-49 | BOLT, SOCKET HEAD                 | 1    |
| 25-50   | C-1500-DC-CTD-25-50 | SWITCH, LIMIT                     | 1    |
| 25-51   | C-1500-DC-CTD-25-51 | BLOCK, TERMINAL                   | 1    |
| 25-52   | C-1500-DC-CTD-25-52 | SCREW, PHILLIPS HEAD MACHINE      | 1    |
| 25-53   | C-1500-DC-CTD-25-53 | BOLT, HEX HEAD                    | 1    |
| 25-54   | C-1500-DC-CTD-25-54 | WASHER, LOCK - M10                | 1    |
| 25-55   | C-1500-DC-CTD-25-55 | WASHER, FLAT - M10                | 1    |
| 25-56   | C-1500-DC-CTD-25-56 | ASSEMBLY, PUMP                    | 1    |
| 25-57   | C-1500-DC-CTD-25-57 | WASHER, RUBBER COATED             | 2    |
| 25-58   | C-1500-DC-CTD-25-58 | JOINT, OIL HOSE                   | 1    |

\* Item is not available for sale. However, it may be available as part of a kit or assembly.

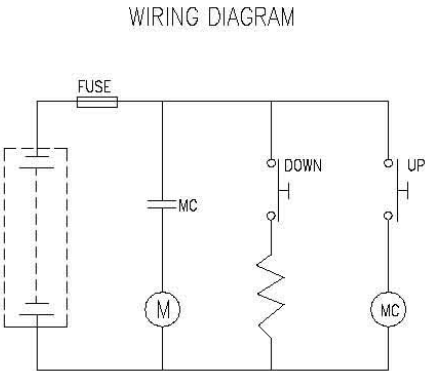
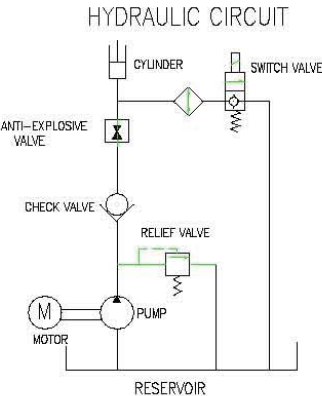
**BCART-1500-D-DC-CTD-CONTROL BOX**



| NO.   | PART NUMBER         | DESCRIPTION                  | QTY. |
|-------|---------------------|------------------------------|------|
| 26    | C-1500-DC-CTD-26    | ASSEMBLY, THROTTLE BOX       | 1    |
| 26-1  | C-1500-DC-CTD-26-1  | LIGHT                        | 1    |
| 26-2  | C-1500-DC-CTD-26-2  | BUTTON, HORN                 | 1    |
| 26-3  | C-1500-DC-CTD-26-3  | SCREW                        | 1    |
| 26-4  | C-1500-DC-CTD-26-4  | COVER, TOP                   | 1    |
| 26-5  | C-1500-DC-CTD-26-5  | BOLT, HEX HEAD               | 1    |
| 26-6  | C-1500-DC-CTD-26-6  | SWITCH, MICRO                | 1    |
| 26-7  | C-1500-DC-CTD-26-7  | NUT, NYLON LOCK              | 1    |
| 26-8  | C-1500-DC-CTD-26-8  | THROTTLE                     | 1    |
| 26-9  | C-1500-DC-CTD-26-9  | PLATE, MOUNTING              | 1    |
| 26-10 | C-1500-DC-CTD-26-10 | WASHER, FLAT - M5            | 1    |
| 26-11 | C-1500-DC-CTD-26-11 | WASHER, LOCK - M5            | 1    |
| 26-12 | C-1500-DC-CTD-26-12 | BOLT, SOCKET HEAD            | 1    |
| 26-13 | C-1500-DC-CTD-26-13 | NUT, NYLON LOCK              | 1    |
| 26-14 | C-1500-DC-CTD-26-14 | SCREW, PHILLIPS HEAD MACHINE | 1    |
| 26-15 | C-1500-DC-CTD-26-15 | WASHER, LOCK                 | 1    |
| 26-16 | C-1500-DC-CTD-26-16 | WASHER, FLAT                 | 1    |
| 26-17 | C-1500-DC-CTD-26-17 | KNOB, THROTTLE               | 1    |
| 26-18 | C-1500-DC-CTD-26-18 | HOUSING, THROTTLE            | 1    |
| 26-19 | C-1500-DC-CTD-26-19 | SPRING                       | 1    |
| 26-20 | C-1500-DC-CTD-26-20 | COVER, BELLY SWITCH          | 1    |
| 26-21 | C-1500-DC-CTD-26-21 | PIN, SPRING                  | 1    |
| 26-22 | C-1500-DC-CTD-26-22 | NUT, WIRE                    | 1    |
| 26-23 | C-1500-DC-CTD-26-23 | SCREW, PHILLIPS HEAD MACHINE | 2    |
| 26-24 | C-1500-DC-CTD-26-24 | WASHER, LOCK                 | 1    |
| 26-25 | C-1500-DC-CTD-26-25 | SCREW                        | 1    |
| 26-26 | C-1500-DC-CTD-26-26 | SPACER                       | 1    |
| 26-27 | C-1500-DC-CTD-26-27 | CONNECTOR                    | 1    |

\* Item is not available for sale. However, it may be available as part of a kit or assembly.

**12. HYDRAULIC CIRCUIT/WIRING DIAGRAM/ACTUAL WIRING DIAGRAM**





## LIMITED WARRANTY

Beacon Industries, Inc. ("Beacon") warrants this product to be free of defects in material and workmanship during the warranty period. *Our warranty obligation is to provide a replacement for a defective original part if the part is covered by the warranty, after we receive a proper request from the warrantee (you) for warranty service.*

### Who may request service?

Only a warrantee may request service. *You are a warrantee if you purchased the product from Beacon or from an authorized distributor AND Beacon has been fully paid.*

### What is an "original part"?

An original part is a part used to make the product as shipped to the warrantee.

### What is a "proper request"?

A request for warranty service is proper if Beacon receives: 1) a photocopy of the Customer Invoice that displays the shipping date; AND 2) a written request for warranty service including your name and phone number. Send requests by any of the following methods:

|                         |                |                            |
|-------------------------|----------------|----------------------------|
| Mail:                   | Phone:         | Email:                     |
| Beacon Industries, Inc. | (314) 487-7600 | sales@beacontechnology.com |
| 12300 Old Tesson Rd.,   | Fax:           |                            |
| St. Louis, MO 63128     | (314) 487-0100 |                            |

In the written request, list the parts believed to be defective and include the address where replacements should be delivered.

### What is covered under the warranty?

After Beacon receives your request for warranty service, an authorized representative will contact you to determine whether your claim is covered by the warranty. Before providing warranty service, Beacon may require you to send the entire product, or just the defective part or parts, to its facility in Angola, IN. The warranty covers defects in the following original dynamic components: motors, hydraulic pumps, electronic controllers, switches and cylinders. It also covers defects in original parts that wear under normal usage conditions ("wearing parts"), such as bearings, hoses, wheels, seals, brushes, and batteries.

### How long is the warranty period?

The warranty period for original components is 90 days. The warranty period begins on the date when Beacon ships the product to the warrantee. If the product was purchased from an authorized distributor, the period begins when the distributor ships the product. Beacon may extend the warranty period for products shipped from authorized distributors by *up to* 30 days to account for shipping time.

### If a defective part is covered by the warranty, what will Beacon do to correct the problem?

Beacon will provide an appropriate replacement for any *covered* part. An authorized representative of Beacon will contact you to discuss your claim.

### What is not covered by the warranty?

1. Labor;
2. Freight;
3. Occurrence of any of the following, which automatically voids the warranty:
  - Product misuse;
  - Negligent operation or repair;
  - Corrosion or use in corrosive conditions;
  - Inadequate or improper maintenance;
  - Damage sustained during shipping;
  - Accidents involving the product;
  - Unauthorized modifications: DO NOT modify the product IN ANY WAY without first receiving written authorization from Beacon. Modification(s) might make the product unsafe to use or might cause excessive and/or abnormal wear.

### Do any other warranties apply to the product?

Beacon Industries, Inc. makes no other express warranties. All implied warranties are disclaimed to the extent allowed by law. Any implied warranty not disclaimed is limited in scope to the terms of this Limited Warranty.