

PALLET SERVER

SAFE ERGONOMIC ALTERNATIVE TO FORK TRUCKS AT A FRACTION OF THE COST

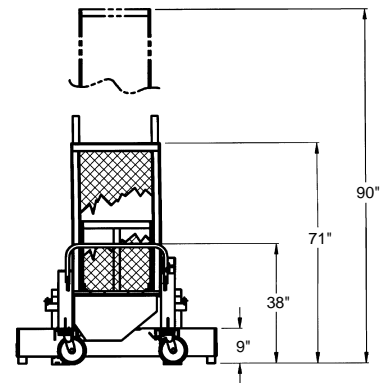
FEATURES

- Adjustable Fork Width Range From 8" to 37"
- Hand Held Pendant Control
- Standard Caster Lock
- Emergency Stop Velocity Fuse
- Handle Pallets, Skids, and Crates with or without an Understructure

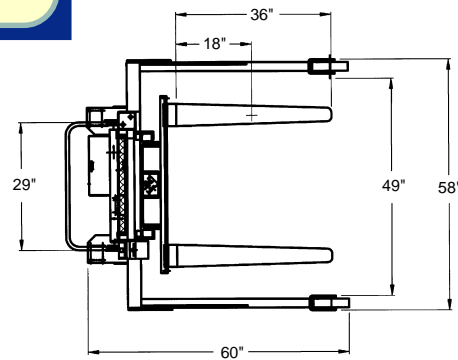
OPTIONS

- DC, AC, or Air/Oil
- Bench Top or On-Board Battery Charger
- Battery Charge Indicator
- Portable Traction Drive System

MODEL: BPMPS-50



Drawings reflect BPM/BPS-50



SPECIFICATIONS

Capacity	4,000 lbs.
Load Center	18"
Fork Size	4"W x 36"L x 1 1/2"H
Lowered Height	2"
Raised Fork Height (BPMPS-50)	50"
Raised Fork Height (BPMPS-60)	60"
Straddle Legs I.D.	49"
Straddle Legs O.D.	58"
Weight (BPMPS-50)	950 lbs.
Weight (BPMPS-60)	980 lbs.
Casters (Phenolic)	8" x 2" Swivel
Load Wheels (Phenolic)	8" x 2"
Battery	12V Deep Cycle

optional

PORTABLE TRACTION DRIVE SYSTEM

REDUCE BACK INJURY • REDUCE FATIGUE • EASY TO USE

MODEL: BPTDS (add as a suffix)

This factory installed option will reduce worker fatigue and injuries. An alternative to costly fork trucks, the BPTDS option makes portable equipment easy to maneuver. This state of the art operation allows a single operator to perform a task and safely transport the product.

FEATURES

- Programmable Motor Control
- Ergonomic, Adjustable Steering Yoke Control
- Autolocking Electromagnetic Brake
- Key Lockout
- Safety Horn
- 2 Deep Cycle Batteries
- Traction Drive Wheel
- Auto Reverse Emergency Switch
- 240 Degree Turning Radius



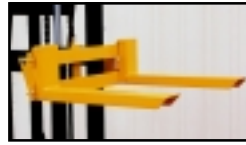
HYDRA-LIFTS

ECONOMICAL • FOR COMMERCIAL OR INDUSTRIAL USE • ERGONOMIC

MODEL: BHYDRA-2



MODEL: BHYDRA-4



HYDRA OPTIONS

Adjustable Forks 18" long
Suffix AF-18
(available on BHYDRA-4
& BHYDRA-HD only)



Floor Lock, Suffix FL
(available on all models)

MODEL: BHYDRA-HD



OPTIONAL Two Speed Pump with Flow Control & Pressure Relief, Suffix DSP.

Poly-on-Steel Casters Standard

Capacity 750 lbs.
Deck Size 20"W x 16"L
Overall Size 23"W x 27"L x 59"H
Lowered Height Floor
Raised Height 52"
Casters 8" x 2"
Weight 160 lbs.

Capacity 750 lbs.
Deck Size 20"W x 22"L
Overall Size 23"W x 33"L x 61½"H
Lowered Height 5½"
Raised Height 54"
Casters Back 8" x 2"
Front 3¼" x 1½" (Rubber)
Weight 170 lbs.

Capacity 1,000 lbs.
Deck Size 24"W x 22"L
Overall Size 24"W x 34"L x 62"H
Lowered Height 5½"
Raised Height 55"
Casters Back 4" x 1½"
Front 5" x 1½"
Weight 225 lbs.

MODEL: BHYD-5



FEATURES

- Chrome Plated Handle & Supports
- Removable Solid Platform
- Heavy Duty Lifting Chain
- Foot Pedal Features an Anti-Slip Sleeve
- Poly-on-Steel Casters



Remove platform when
forks are needed

Overall Fork Width
21¾"

Fork Size
4⅜"W x 24"L x 2½"H

MODEL: BHYD-10



Shown with
DC Power Unit

Capacity 880 lbs.
Deck Size 23"W x 24"L
Overall Size 22½"W x 36"L x 55"H
Lowered Height 3½"
Raised Height 44"
Casters Back 6" x 2"
Front 3" x 2"
Weight 170 lbs.
Travel/Stroke ¼"
Handle Height 42"

Capacity 880 lbs.
Deck Size 23"W x 24"L
Overall Size 22½"W x 37"L x 70"H
Lowered Height 3½"
Raised Height 59"
Casters Back 9" x 2"
Front 3" x 2"
Weight 205 lbs.
Travel/Stroke 1¼"
Handle Height 38"

LITE LOAD LIFTS



4 SWIVEL WHEEL OPTION

Add Suffix - 4SL
Available for both models
(adds 2" to raised & lowered height)

SPECIFICATIONS

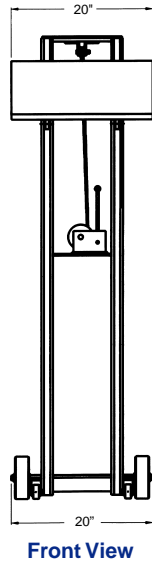
Load Capacity	500 lbs.
Load Center	10"
Lowered Height	3 ¹ / ₈ "
Raised Height (LLH)	53"
Raised Height (LLW)	58"
Weight (LLH)	125 lbs.
Weight (LLW)	88 lbs.
Casters (Mold-on-Rubber)	2" x 6"



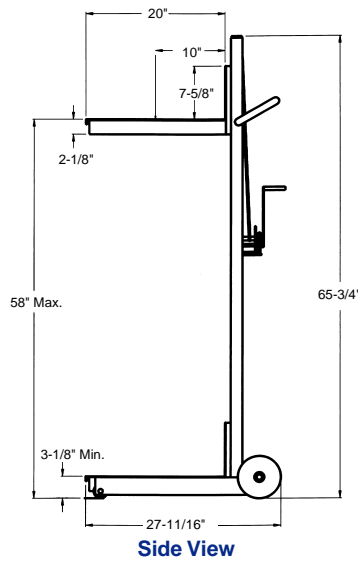
FRONT WHEEL OPTION

BFW models have 2" diameter semi steel wheels

MODEL: BLLH



Front View



Side View

MODEL: BLLW



FLOOR LOCK OPTION
Model - BLLW-FL
Available on both models

POWERED HYDRA-LIFT

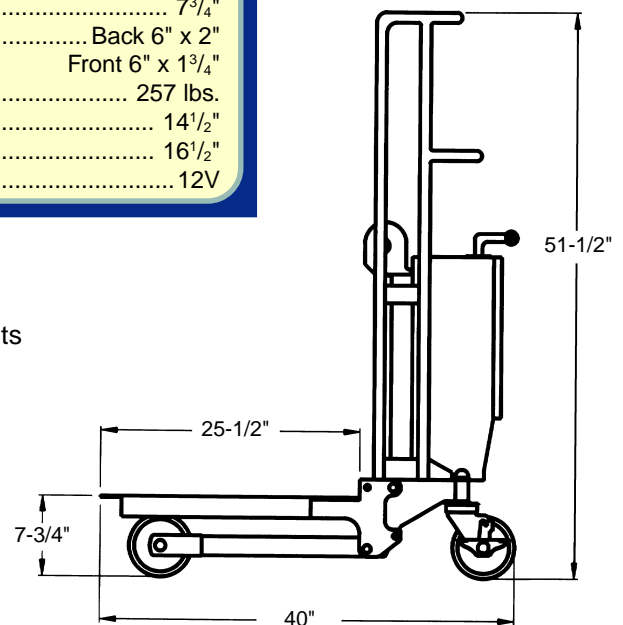
MODEL: BHYD-6-DC



Capacity	880 lbs.
Deck Size	21 ³ / ₄ "W x 25 ¹ / ₂ "L
Raised Height	47 ¹ / ₄ "
Lowered Height	7 ³ / ₄ "
Casters	Back 6" x 2" Front 6" x 1 ³ / ₄ "
Weight	257 lbs.
Straddle Legs I.D.	14 ¹ / ₂ "
Straddle Legs O.D.	16 ¹ / ₂ "
Battery	12V

FEATURES

- Chrome Plated Handle & Supports
- Heavy Duty Lifting Chain
- Solid Platform
- On-Board Battery Charger
- Mold-on-Rubber Casters

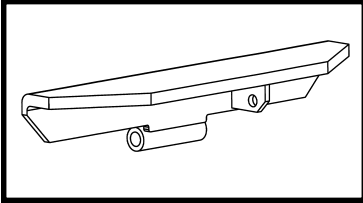


ADJUSTABLE BOX STACKER

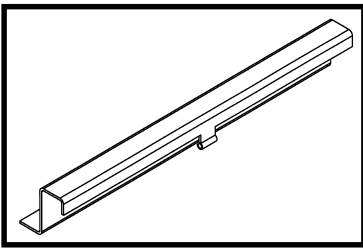
The Adjustable Box Stacker is specially designed for transporting, stacking, and lifting plastic containers. All models are compact and light weight. Both fork width and box clamps are adjustable to fit different size plastic containers. All box clamps are rubber coated to protect your plastic container.

MODEL: BABS-115

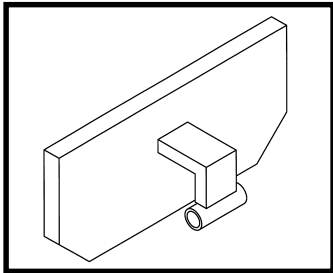
STANDARD



L-TYPE



T-TYPE



DRIVING HANDLE

PUMP PEDAL

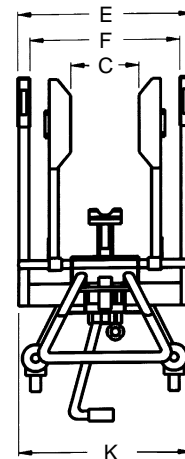
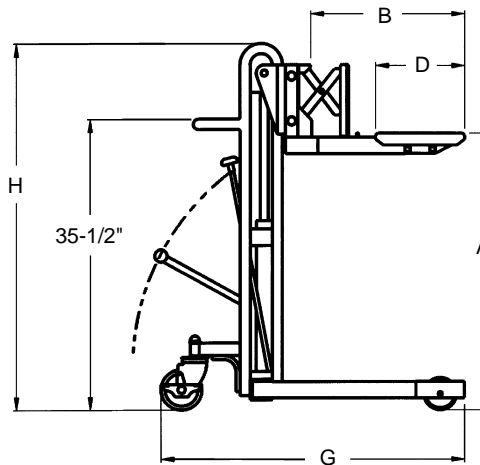
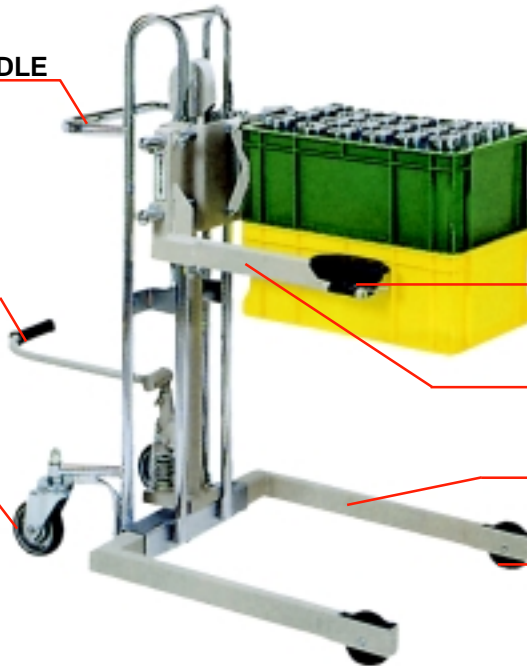
STEERING WHEEL

SIDE CLAMP

CATCH FORK

STAND FORK

LOAD WHEEL



Load Wheels: 4" x 1" (Mold-on-Rubber)
Casters: 5" x 1 5/8" (Mold-on-Rubber)

MODEL	Capacity (lb.)	Lowered Height (in.)	Raised Height (in.)	Fork Size (in.)		Box clamp (in.)	Outrigger (in.)		Overall (in.)			Number of Foot Pumps	Weight (lb.)
			A	Length	Width		O.D.	I.D.	L	W	H		
				B	C		D	E	F	G	K		
BABS-115	330	2 3/4	33 1/2	19 2/3	8 to 15 3/4	11	17 3/4 to 23 2/3	14 to 20	37 1/2	21	44 2/3	18	112
BABS-130			47 1/4								58 1/2		
BABS-115L	330	Floor	31	25 1/2	10 to 17 3/4	22 1/2	17 3/4 to 23 2/3	14 to 20	41 1/4	21	44 2/3	18	110
BABS-130L			44 3/4								58 1/2		
BABS-115T	330	3 1/2	34 1/4	20	9 1/2 to 17 1/4	7 3/4	17 3/4 to 23 2/3	14 to 20	37 1/2	21	44 2/3	18	110
BABS-130T			48								58 1/2		

COMPACT WINCH STACKER

ERGONOMIC • COMPACT • USER FRIENDLY • ECONOMICAL

The Compact Winch Stacker is an economic and ergonomic alternative for lifting pallets of all sizes. This compact truck is perfect for loading/unloading trucks where docks are not available.

FEATURES

- Safety Cage
- Adjustable Straddle Legs
- Winch with an Automatic Braking System
- Floor Brake to Secure the Unit in Place
- Easy to Use

MODEL: BCWS-60

SPECIFICATIONS

Capacity 750 lbs.
 Load Center 24"
 Lowered Fork Height 3"
 Raised Fork Height 60"
 Fork Size 3"W x 36"L x 1½"H
 Overall Size 40"-56"W x 50"L x 76"H
 Straddle Legs Adjust I.D. 34"-50"
 Forks Adjust O.D. 6"-24"
 Weight 355 lbs.
 Casters 4" Swivel Phenolic
 Front Wheels 4" Phenolic

OPTIONS

- Snap-on Platform
- Modified Fork Lengths



QUICK LIFTS

MODEL: BPEL-88

This ergonomic portable electric lift is the safest, quickest way to get products from one height to another and from one location to another.

MODEL: BPEL-400-57



FEATURES

- 24 Volt DC Power Unit
- Hand Held Pendant Control on Coil Cord
- On-Board Battery Charger
- Sealed Lead Acid Batteries
- Roller Bearing Mast Guides
- Quiet Chain Drive
- Four 4" Swivel Casters
- Rear Casters are Double Locking
- Ergonomic Handle with Hand Grips
- Fits in Confined Spaces and Narrow Aisles
- High Density Polyethylene Platform
- Great for Clean Room Applications



OPTIONAL Battery Charge Indicator

Special Attachments & Platforms Available

MODEL	Capacity	Deck Size W x L	Overall W x L x H	Lowered Height	Raised Height	Travel Time Seconds	Weight
BPEL-88	175 lbs.	23½" x 18-½"	23½" x 36" x 64¼"	5¼"	57"	17 loaded 10 unloaded	135 lbs.
BPEL-100	125 lbs.	23½" x 18½"	23½" x 36" x 79½"	5¼"	72"	26 loaded 16 unloaded	140 lbs.
BPEL-400-57	400 lbs.	24" x 20"	24" x 37½" x 66"	6½"	57"	15 loaded 8 unloaded	300 lbs.
BPEL-400-72	400 lbs.	24" x 20"	24" x 37½" x 81"	6½"	72"	19 loaded 10 unloaded	315 lbs.

HYDRAULIC STACKERS

SAFE ERGONOMIC ALTERNATIVE TO FORK TRUCKS AT A FRACTION OF THE COST

Engineered for smooth operation and outstanding durability, the Hydraulic Stackers handle the following applications: Lift and transport skids, bales and baskets; load/unload trucks; stock shelves; and handle dies, molds, or pallets. By combining a power lift with an easy to operate manual push, these Hydraulic Stackers are perfect for maneuvering in tight or congested areas.

MODEL: BHYS-60



Shown with 4" phenolic front wheels

FEATURES

- Heavy Duty Steel Frame
- Dual Heavy Duty Lifting Chains
- Hydraulic System has Chrome Plated Ram and Relief Valve for Overload Protection
- Hand Controlled Floor Brake to Secure the Unit in Place

MODEL: BHYS-96



Shown with 7" nylon front wheels

SPECIFICATIONS

Capacity	1,500 lbs.
Load Center	24"
Lowered Fork Height	3"
Raised Fork Height (BHYS-60)	60"
Raised Fork Height (BHYS-96)	96"
Overall Size (BHYS-60)	40"-56"W x 58"L x 70"H
Overall Size (BHYS-96)	40"-56"W x 58"L x 69"H
Adjustable Straddle Legs I.D.	34"-50"
Adjustable Straddle Legs O.D.	40"-56"
Fork Size	3"W x 42"L x 1 1/2"H
Fork Adjust O.D. (BHYS-60)	6"-24"
Fork Adjust O.D. (BHYS-96)	6"-25"
Weight (BHYS-60)	625 lbs.
Weight (BHYS-96)	815 lbs.
Casters	6" Swivel Phenolic
Front Wheels	4" Phenolic or 7" Nylon
Battery	12V Heavy Duty
Charger	Built-in 12V with Overload

• Easy To Use

• Low Maintenance

• Minimal Training Required

OPTIONS

- 2,000 / 2,500 and 3,000 lb Capacities (BHYS-60)
- 2,000 lb Capacity (BHYS-96)
- 70" and 80" Lift Heights (BHYS-60)
- 120" and 132" Lift Heights (BHYS-96)
- Fixed Straddle Legs up to 50" I.D.
- 5th Wheel (BHYS-60)
- AC Power
- Remote Control
- Snap-on Platform
- Modified Fork Lengths
- Work Platform with Safety Rail

TOTE LIFTER

ERGONOMIC • USER FRIENDLY • INCREASES PRODUCTIVITY • LOW MAINTENANCE

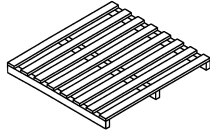
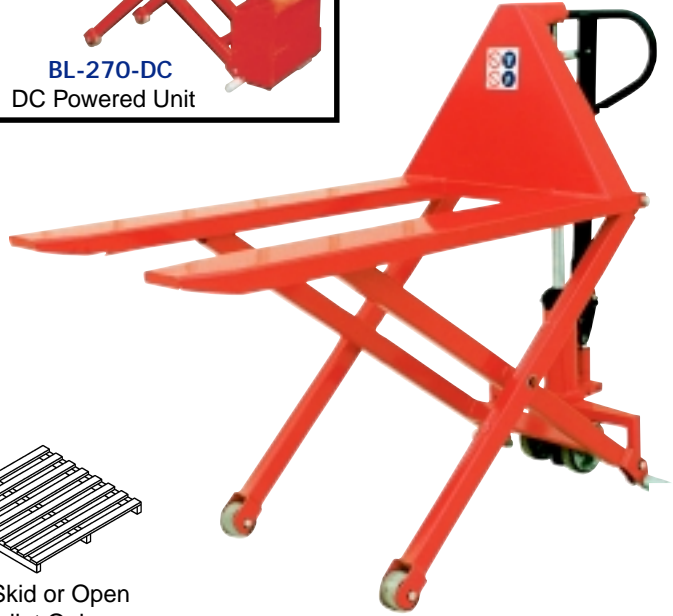
FEATURES

- Pump Handle has Two Lifting Speeds to Accommodate for Light or Heavy Loads.
- Chrome Plated Telescoping Pump Rod
- Debris Guard Located Above Cylinder Housing to Reduce the Likelihood of Contamination.
- Side Stabilizers provide balance to unit when load is lifted or the product is taken off one side at a time.



BL-270-DC
DC Powered Unit

MODEL: BL-270



For Skid or Open Pallet Only

SPECIFICATIONS

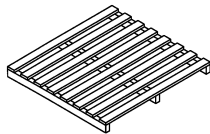
Capacity	2,200 lbs.
Fork Size	6 $\frac{1}{2}$ "W x 43"L x 3 $\frac{1}{2}$ "H
Lowered Height	3 $\frac{1}{2}$ "
Raised Height	31 $\frac{1}{2}$ "
Overall Fork Width (BL-220)	20 $\frac{1}{2}$ "
Overall Fork Width (BL-270)	26 $\frac{3}{4}$ "
Load Wheels (Poly-on-Steel)	3" x 2"
Steering Wheels (Poly-on-Steel)	6" x 1 $\frac{5}{8}$ "
Weight	260 lbs.

TOTE-A-LOAD

ERGONOMIC • SAFE • HEAVY DUTY • EASY TO USE

This all steel construction unit contains a foot pump style mechanism that handles loads up to 2,200 lbs. The Tote-A-Load contains dual lifting chains to add extra support for lifting your product.

MODEL: BTAL-260



For Skid or Open Pallet Only

SPECIFICATIONS

Capacity	2,200 lbs.
Lowered Height	3 $\frac{1}{2}$ "
Raised Height	35"
Fork Size	6 $\frac{1}{2}$ "W x 43"L x 2 $\frac{1}{2}$ "H
Overall Fork Width	26 $\frac{3}{8}$ "
Load Wheels (Poly-on-Steel)	3 $\frac{1}{4}$ " x 2 $\frac{3}{4}$ "
Steering Wheels (Poly-on-Steel)	6" x 1 $\frac{5}{8}$ "
Weight	260 lbs.



Also Available with a DC Power Unit

HIGH RISE LIFT TRUCK

REDUCE INJURIES • ERGONOMIC • INCREASE PRODUCTIVITY • SAFE

Designed to increase worker efficiency and productivity while decreasing bending and the risk of back injury. Unit will raise crates, bins, and skids from floor level to an ergonomic work height.

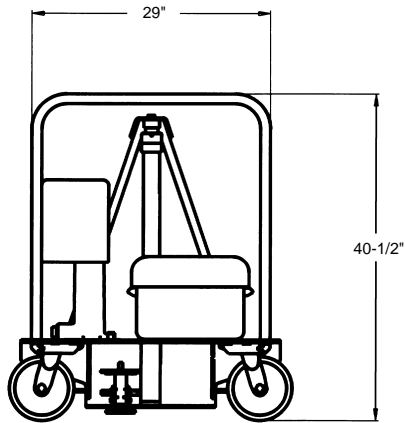
MODEL: BHIPM-2748



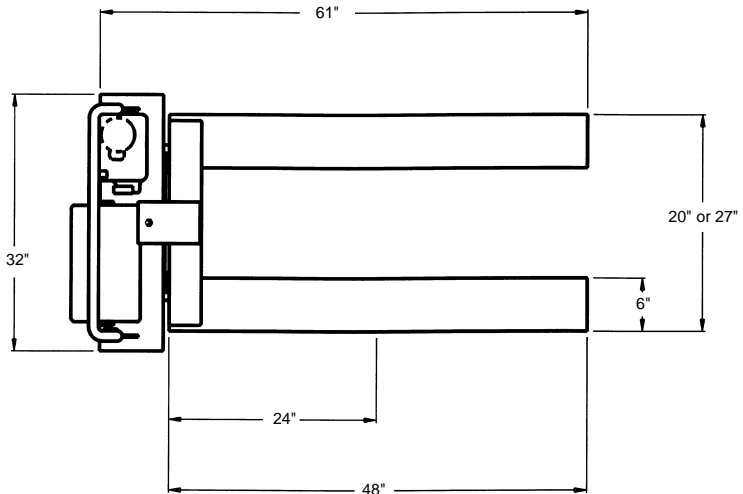
SPECIFICATIONS

Capacity	2,500 lbs.
Lowered Height	3 1/2"
Raised Height	31"
Fork Size	6 1/2"W x 48"L x 2 1/4"H
Overall Fork Width (BHIPM-2048)	20"
Overall Fork Width (BHIPM-2748)	27"
Steering Wheels	8" x 2" Phenolic
Load Rollers	3" x 1 1/2" Phenolic
Handle Height (Non-Removable)	41 1/2"
Horizontal Load Center	24" From Base of Forks
Weight (BHIPM-2048)	490 lbs.
Weight (BHIPM-2748)	500 lbs.

- Once materials are loaded onto lift, the floor lock is used to secure the truck in place.
- 12V DC motor with fingertip rocker switch control standard.
- AC or Air/Oil are also available.
- Optional battery level indicator gauge available.
- Optional remote or on-board battery chargers are available.



Rear View



Top View

Beacon Industries, Inc.
 12300 Old Tesson Rd.
 St. Louis, MO 63128-2247 USA
 Phone: (314) 487-7600 Fax: (314) 487-0100
www.beacontechnology.com
 E-Mail: sales@beacontechnology.com