



# Self-Dumping Steel Hoppers

Leading the Industry in Safety & Design • Robotically Welded Steel Construction

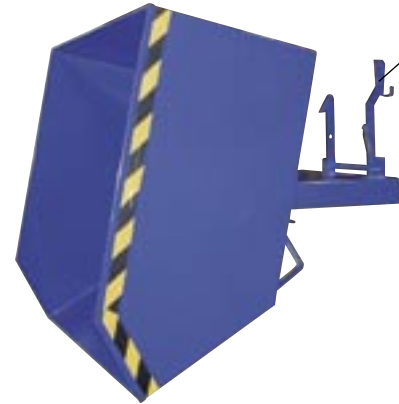
## Low Profile 90° Self-Dumping Steel Hoppers

Units have a full 90° dump angle with a cushioned rubber bumper stop. The low profile design is essential for convenient loading. Dumping with a forklift is quick and simple. A cable is pulled from the seat of the forklift to dump the hopper. The unit returns to an upright and locked position when lowered to the ground. A locking chain is provided to secure the hopper to the forklift. 22" L usable fork pockets measure 7" W x 2" H on 11-5/8" centers. Unit includes robotic welds to offer a leak proof design. Blue powder coat finish.

Model Number	Volume Cubic Yards	Capacity (pounds)	Overall Size (W x D x H)	Gauge of Steel
BH-25-LD	1/4	2,000	25-1/2" x 45" x 17-3/4"	12
BH-50-LD	1/2	2,000	25-1/2" x 50" x 28"	12
BH-100-LD	1	2,000	48-3/4" x 51" x 28-1/2"	12
BH-150-LD	1-1/2	2,000	48-3/4" x 51" x 41"	12
BH-25-MD	1/4	4,000	25-1/2" x 45" x 17-3/4"	10
BH-50-MD	1/2	4,000	25-1/2" x 50" x 28"	10
BH-100-MD	1	4,000	48-3/4" x 51" x 28-1/2"	10
BH-150-MD	1-1/2	4,000	48-3/4" x 51" x 41"	10
BH-25-HD	1/4	4,500	25-1/2" x 45" x 17-3/4"	7
BH-50-HD	1/2	4,500	25-1/2" x 50" x 28"	7
BH-100-HD	1	5,000	48-3/4" x 51" x 28-1/2"	7
BH-150-HD	1-1/2	5,000	48-3/4" x 51" x 41"	7



22" Fork Tubes



Release Cable Handle

Robotic Welded



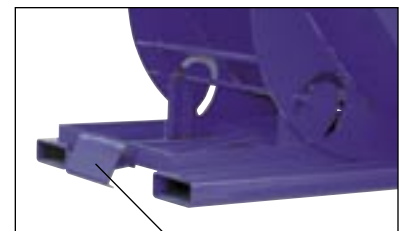
## 85° Self-Dumping Steel Hoppers with Bumper Release

Hopper automatically dumps when bumper release contacts side of dumpster. Hopper returns to an upright and locked position automatically after it dumps. Also includes a cable that may be operated from the seat of the forklift to manually dump the hopper. A locking chain is provided to secure the hopper to the forklift. Usable fork pockets are 7-1/2" W x 2-1/2" H and measures 58" L. Unit includes robotic welds to offer a leak proof design. Powder coat blue finish.

Model Number	Volume Cubic Yards	Capacity (pounds)	Overall Size (W x D x H)	Gauge of Steel
BD-100-LD	1	2,000	41-1/4" x 60" x 42-5/8"	12
BD-200-LD	2	2,000	56-1/4" x 69" x 52"	12
BD-300-LD	3	2,000	81-1/2" x 69" x 52"	12
BD-200-MD	2	4,000	56-1/4" x 69" x 52"	10
BD-300-MD	3	4,000	81-1/2" x 69" x 52"	10
BD-33-HD*	1/3	4,500	26" x 46" x 38"	7
BD-50-HD*	1/2	4,500	33-1/4" x 46" x 38"	7
BD-75-HD	3/4	4,500	31-1/4" x 60" x 42-3/4"	7
BD-100-HD	1	5,000	41-1/4" x 60" x 42-5/8"	7
BD-150-HD	1-1/2	5,000	43-1/4" x 69" x 52"	7
BD-200-HD	2	5,500	56-1/4" x 69" x 52"	7
BD-250-HD	2-1/2	5,500	69-1/4" x 52" x 66"	7
BD-300-HD	3	5,500	81-1/2" x 69" x 52"	7



58" Fork Tubes\*



Bumper Release

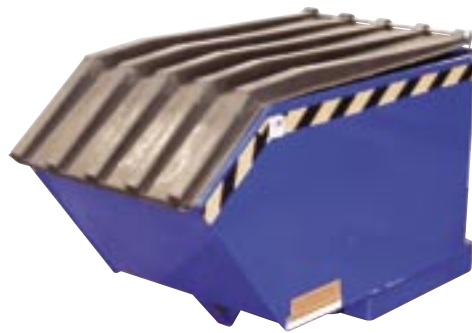
\* 49" L Fork Pockets

# Options for Self-Dumping Steel Hoppers

## Hopper Covers with Lock and Prop

- COVER**.....Keep rain and snow out - keep contents in
- LOCK**.....Keep inappropriate additions out
- PROP**.....Dual-position prop keeps cover raised for convenient loading
- DURABLE**.....Rotationally molded design is impact resistant, doesn't rust, and includes UV stabilizer to prevent sun damage
- DESIGN**.....Strong anti-sag ribs are crowned to provide for water drainage
- ECONOMICAL**.....Installs conveniently on new or existing hopper
- ATTRACTIVE**.....Does not scratch, dent or rust
- LIGHTWEIGHT**.....Easy to lift, no pinched fingers
- EPA / HEALTH**.....Eliminate mosquito breeding area and minimize odors

Keep the contents of hoppers out of sight for a neater appearance with these Hopper Covers. Constructed from heavy-duty virgin black polyethylene material, these lids are lightweight and easy to open. The top of the lid includes a crown for water drainage, and a ribbed design for strength and aesthetics. Ideal for schools, hospitals, and warehouse. Factory or field installed.

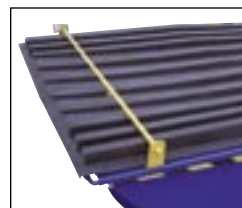
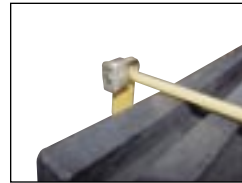


"BH" Series Cover



"BD" Series Cover

Model Number	For Use with Hopper Size	For Use with Hopper Style	Weight (pounds)
BPLID-H-25	1/4	H	7
BPLID-H-50	1/2	H	8
BPLID-H-100	1	H	16
BPLID-H-150	1-1/2	H	16
BPLID-D-33	1/3	D	7
BPLID-D-50	1/2	D	8
BPLID-D-75	3/4	D	9
BPLID-D-100	1	D	10
BPLID-D-150	1-1/2	D	14
BPLID-D-200	2	D	16
BPLID-D-250	2-12	D	18
BPLID-D-300	3	D	20



Includes Hopper Cover Lock (padlock not included)



Cover Prop

## Casters\*

Transport loads of refuse, scrap metal, wood, plastic, cardboard, etc. with portable hoppers. Casters ordered with original hopper are equipped with caster pads for quick bolt-on installation. Choose from Semi-Steel, Mold-On-Rubber or Poly-On-Steel. The 1/4 and 1/2 cubic yard "BH" series hoppers only include three casters.

Model Number	Caster Size	Capacity (pounds)	Description
BHOP-SC6-2	6" x 2"	4,800	Semi-Steel
BHOP-SC8-2	8" x 2"	4,800	Semi-Steel
BHOP-RC6-2	6" x 2"	2,400	Mold-On-Rubber
BHOP-RC8-2	8" x 2"	2,400	Mold-On-Rubber
BHOP-PC6-2	6" x 2"	4,800	Poly-On-Steel
BHOP-PC8-2	8" x 2"	4,800	Poly-On-Steel



Semi-Steel



Mold-On-Rubber



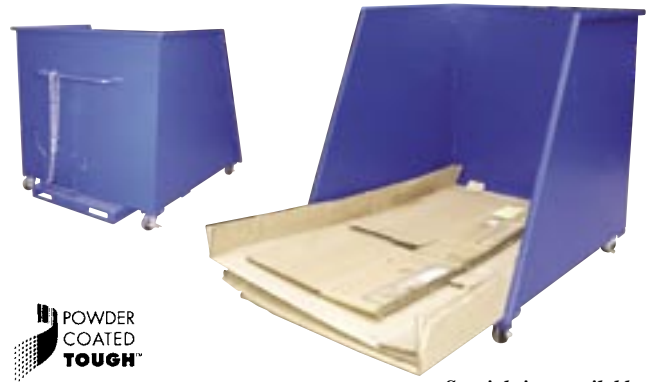
Poly-On-Steel

\*May affect self-dumping action.

# Specialty Self-Dumping Steel Hoppers

## Open Ended Steel Dumping Hoppers

Reduce bending and lifting motions while loading items into a hopper. This hopper will allow convenient and orderly loading at ground level with its open front design. Items can be loaded so that more can be put in a hopper. Rolling smoothly on 4" x 2" phenolic casters, the hopper can easily be moved from one location to another. Once the hopper is full or the user has finished loading the items, the hopper can be easily dumped with the use of fork truck. Durable powder coat blue finish.



*Special sizes available.*

Model Number	Capacity (pounds)	Overall Size (W x D x H)	Usable Size (W x D x H)
BHOP-OE	2,000	55" x 60" x 54"	51-1/2" x 60" x 48"

## Low Profile Parts Hopper

This unique product has been designed to function as a parts hopper that may be dumped with the assistance of a fork truck. The low-profile design (only 18" high) allows the hopper to be placed underneath machinery to be used as a catch basin for parts. The newly designed hopper reduces the hazards, inconveniences and time when collecting parts off the floor.

This 1/2 cubic yard dumping parts hopper has fork pockets for dumping the hopper 90° with a forklift. Unit rolls smoothly on 4" x 2" phenolic casters and includes a push handle. Once the material is dumped, the hopper will return to the locked position when lowered to the ground. Durable powder coat blue finish.



*Special sizes available.*

Model Number	Capacity (pounds)	Overall Size (W x D x H)	Usable Size (W x D x H)	Handle Height
BHOP-LP	1,500	48-1/2" x 57" x 18"	48" x 49" x 12"	33-1/2"

## Steel Chute Hoppers

Unit is designed for use in areas with limited space. Fixed-position hopper features a full-height front door that opens to dump the hopper contents. Door will automatically close and lock after contents have been dumped. Front door is opened with a release cable that may be operated from the seat of the fork truck. Units may be moved with assistance from a fork truck. Safety chain is included for securing unit to the carriage of fork truck. Welded steel construction with blue painted finish.



Model Number	Cubic Yards	Capacity (pounds)	Overall Size (W x D x H)	Gauge
BC-HOP-1.5	1.5	5,000	43" x 47" x 65"	7
BC-HOP-2	2	5,000	56-1/4" x 47" x 65"	7

## Hopper on Trailer

Transport different types of material, refuse, building materials, landscaping materials, etc., with this multi-purpose Hopper on a Trailer. Once material is delivered to the desired location, the hopper may be manually dumped to empty the material being transported. Unit has a winch for controlled dumping (dump a partial load at one location and then another partial load at another location). The hopper is detachable from the trailer to use as a stationary hopper. Fork pockets and removable hitch provide versatility; by removing, the unit becomes a self-dumping hopper fork truck attachment.



*When dumping, trailer should be attached to truck for stability.*

Model Number	Capacity (pounds)	Cubic Yards	Overall Size (W x D x H)	Wheels	Wheel Rims
BHOP-T-2	2,000	2	56-1/4" x 117" x 71"	26" pneumatic	14"
BHOP-T-3	3,000	3	81-3/4" x 117" x 71"	26" pneumatic	14"

# Self-Dumping Steel Hoppers

## Portable Steel Hoppers

Portable Steel Hoppers make handling waste and bulk material safer and more convenient. Fork truck entry tubes are designed to move hopper over rough terrain. Usable fork pockets are 8" x 2" on 24" centers (12-1/2" fork pocket center for 1/2 cubic yard capacity models only). Foot operated caster lock is included. Units tilt with assistance from operator handle for dumping contents. Welded construction makes them durable. Durable powder coat blue finish.

Model Number	Volume Cubic Yards	Capacity (pounds)	Overall Size (W x D x H)	Gauge of Steel
BP-HOP-0.5	0.5	1,000	22" x 56" x 42-1/2"	14
BP-HOP-1	1	1,000	43-1/2" x 56" x 46-1/2"	14
BP-HOP-1.5	1.5	1,000	51" x 56-3/4" x 54-1/2"	14



POWDER COATED TOUGH™

## Portable Steel Hoppers with Optional Power Traction Drive

Reduce worker fatigue and injury with this 1/3 yard Power Traction Drive Hopper. This factory installed option makes portable equipment easy to maneuver with its 240° turning radius, handle grip/throttle and auto reverse. This state-of-the-art operation allows a single operator to perform a task safely and ergonomically. Includes built-in electric drive motor and DC battery with charger. Durable powder coat blue finish.

Model Number	Hopper Size (W x D x H)	Turning Radius	Maximum Speed	Maximum Load Capacity
BHOP-PTD	23-5/8" x 49-1/4" x 38-1/4"	240°	3 m.p.h.	1,500 lbs.



POWDER COATED TOUGH™

## Stackable Self-Dumping Steel Hoppers

These Self-Dumping Steel Hoppers are constructed of all welded steel and can handle capacities up to 6,500 lbs. Variety of sizes available from 1/4 to 6 cubic yards. Each unit features; Beveled Cross Channel for easier fork entry, and a Formed Channel Bumper for added strength and protection. *Options: Casters, Lids, Three Way Entry and Crane Lugs.*



Model Number	Volume Cubic Yards	Weight Capacity (pounds)	Overall Size (W x D x H)	Gauge of Steel
BHOP-100-LD	1	2,000	41-1/2" x 62" x 37"	12
BHOP-150-LD	1-1/2	2,000	59-1/2" x 62" x 37"	12
BHOP-200-LD	2	2,000	59-1/2" x 66" x 46"	12
BHOP-250-LD	2-1/2	2,000	59-1/2" x 66" x 51"	12
BHOP-100-MD	1	4,000	41-1/2" x 62" x 37"	10
BHOP-150-MD	1-1/2	4,000	59-1/2" x 62" x 37"	10
BHOP-200-MD	2	4,000	59-1/2" x 66" x 46"	10
BHOP-250-MD	2-1/2	4,000	59-1/2" x 66" x 51"	10

\*Not Stackable

Model Number	Volume Cubic Yards	Weight Capacity (pounds)	Overall Size (W x D x H)	Gauge of Steel
BHOP-25-HD	1/4	4,000	30-3/4" x 46" x 26-1/2"	7
BHOP-33-HD	1/3	4,000	30-3/4" x 48-1/2" x 31-1/2"	7
BHOP-50-HD	1/2	4,000	41-1/2" x 48-1/2" x 31-1/2"	7
BHOP-75-HD	3/4	4,000	41-1/2" x 56-3/4" x 35-1/2"	7
BHOP-100-HD	1	6,000	41-1/2" x 62" x 37"	7
BHOP-150-HD	1-1/2	6,000	59-1/2" x 62" x 37"	7
BHOP-200-HD	2	6,000	59-1/2" x 66" x 46"	7
BHOP-300-HD*	3	6,000	62-1/2" x 73-1/2" x 59-1/2"	7
BHOP-400-HD*	4	6,000	85-1/2" x 73-1/2" x 59-1/2"	7
BHOP-500-HD*	5	6,000	105-1/2" x 73-1/2" x 59-1/2"	7

## Beacon Industries, Inc.

12300 Old Tesson Rd.

St. Louis, MO 63128-2247 USA

Phone: (314) 487-7600 Fax: (314) 487-0100

[www.beacontechology.com](http://www.beacontechology.com)

E-Mail: [sales@beacontechology.com](mailto:sales@beacontechology.com)