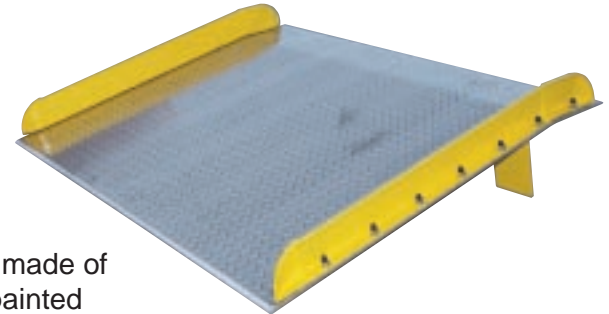
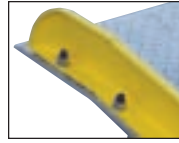


DOCKBOARDS & DOCKPLATES

ALUMINUM TRUCK DOCKBOARDS WITH STEEL SAFETY CURBS

SERIES: BTAS- CAPACITY - WIDTH LENGTH

- Canted Locking Legs for Easier Fork Truck Portability
- Side Curbs Painted Safety Yellow
- Beveled Edges for Smooth Entry & Exit
- Treadplate Design Ensures Positive Traction
- Bend is 11° and 9" from Edge
- Legs are 12" from Edge



This dockboard is designed for extra strength and safety. Deck is made of tough high strength aluminum treadplate. Safety curbs are steel painted yellow and are constructed of structural steel with cast tapered ends. Steel legs are bolted for increased durability. Optional accessories: Lifting Chains, Wheel/Handle Kit and Lever Lift.

CAPACITY 10,000 lbs.	MODEL	HEIGHT DIFFERENCE	SIZE (W x L)
	BTAS-10-6036	5"	60" x 36"
BTAS-10-6048	7"	60" x 48"	
BTAS-10-6060	10"	60" x 60"	
BTAS-10-6072	12"	60" x 72"	
BTAS-10-7236	5"	72" x 36"	
BTAS-10-7248	7"	72" x 48"	
BTAS-10-7260	10"	72" x 60"	

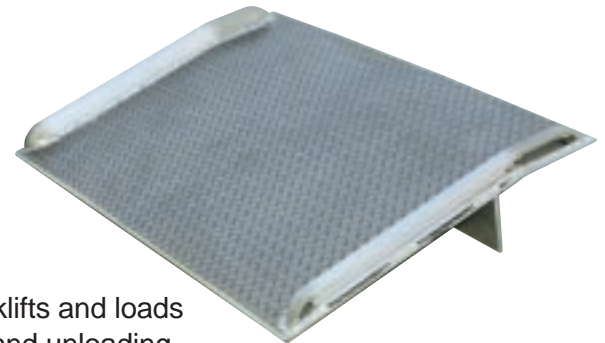
CAPACITY 15,000 lbs.	MODEL	HEIGHT DIFFERENCE	SIZE (W x L)
	BTAS-15-6036	5"	60" x 36"
BTAS-15-6048	7"	60" x 48"	
BTAS-15-6060	10"	60" x 60"	
BTAS-15-6072	12"	60" x 72"	
BTAS-15-7236	5"	72" x 36"	
BTAS-15-7248	7"	72" x 48"	
BTAS-15-7260	10"	72" x 60"	

CAPACITY 20,000 lbs.	MODEL	HEIGHT DIFFERENCE	SIZE (W x L)
	BTAS-20-6036	5"	60" x 36"
BTAS-20-6048	7"	60" x 48"	
BTAS-20-6060	10"	60" x 60"	
BTAS-20-6072	12"	60" x 72"	
BTAS-20-7236	5"	72" x 36"	
BTAS-20-7248	7"	72" x 48"	
BTAS-20-7260	10"	72" x 60"	

ALUMINUM TRUCK DOCKBOARDS

SERIES: BBTA- CAPACITY - WIDTH LENGTH

- Welded Aluminum Safety Curbs Provide Visible Driving Lane
- Beveled Edges for Smooth Entry & Exit
- High Strength Treadplate Design Ensures Positive Traction
- Bend is 11° and 9" from Edge
- Legs are 12" from Edge



Engineered and built to maximize safety while handling heavy forklifts and loads up to 15,000 lbs. Locking legs prevent movement during loading and unloading operations. Welded aluminum safety curbs prevent accidental runoffs. Locking legs are uneven to allow the dockboard to sit canted, while not in use, for easier pickup by forklifts. Additional sizes and capacities to 20,000 lbs. available.

CAPACITY 5,000 lbs.	MODEL	WIDTH	LENGTH
	BBTA-05006036	60"	36"
BBTA-05006048	60"	48"	
BBTA-05006054	60"	54"	
BBTA-05006060	60"	60"	
BBTA-05006072	60"	72"	
BBTA-05007236	72"	36"	
BBTA-05007248	72"	48"	
BBTA-05007254	72"	54"	
BBTA-05007260	72"	60"	
BBTA-05007272	72"	72"	

CAPACITY 10,000 lbs.	MODEL	WIDTH	LENGTH
	BBTA-10006036	60"	36"
BBTA-10006048	60"	48"	
BBTA-10006054	60"	54"	
BBTA-10006060	60"	60"	
BBTA-10006072	60"	72"	
BBTA-10007236	72"	36"	
BBTA-10007248	72"	48"	
BBTA-10007254	72"	54"	
BBTA-10007260	72"	60"	
BBTA-10007272	72"	72"	

CAPACITY 15,000 lbs.	MODEL	WIDTH	LENGTH
	BBTA-15006036	60"	36"
BBTA-15006048	60"	48"	
BBTA-15006054	60"	54"	
BBTA-15006060	60"	60"	
BBTA-15006072	60"	72"	
BBTA-15007236	72"	36"	
BBTA-15007248	72"	48"	
BBTA-15007254	72"	54"	
BBTA-15007260	72"	60"	
BBTA-15007272	72"	72"	

OSHA COMPLIANCE

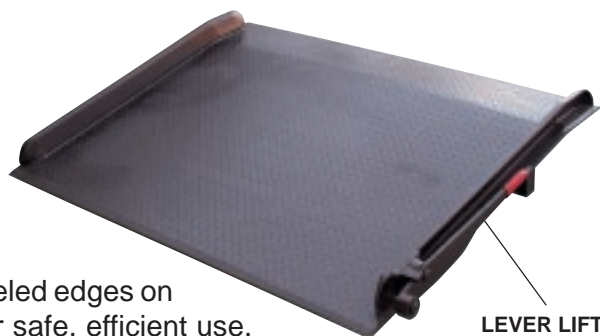
1910.30(a) Dockboards (bridge plates). (1) Portable and powered dockboards shall be strong enough to carry the load imposed on them. (2) Portable dockboards shall be secured in position, either by being anchored or equipped with devices which will prevent them from slipping. (4) Handholds, or other effective means, shall be provided on portable dockboards to permit safe handling.

TRUCK DOCKBOARDS

STEEL TRUCK DOCKBOARDS

SERIES: BTS- CAPACITY - WIDTH LENGTH

- Bend is 11° and 9" from Edge
- Legs are 12" from Edge
- Treadplate Design Ensures Positive Traction
- Welded Safety Curbs for Maximum Strength



LEVER LIFT

Constructed of high strength (55,000 psi) steel for long life. Beveled edges on both ends permit smooth entry and exit. Deck is checkered for safe, efficient use. Locking legs minimize ramp movement and are uneven to allow the dockboard to sit canted for easier floor pickup by forklifts. Standard with lever lift for quick portability. Optional accessories: Lifting Chains, Span Locks, Spain Pins & Holes, and Removable Pickup Loops.

CAPACITY 10,000 lbs.	MODEL	HEIGHT DIFFERENCE	SIZE (W x L)
	BTS-10-6036	5"	60" x 36"
BTS-10-6048	7"	60" x 48"	
BTS-10-6060	10"	60" x 60"	
BTS-10-6072	12"	60" x 72"	
BTS-10-7236	5"	72" x 36"	
BTS-10-7248	7"	72" x 48"	
BTS-10-7260	10"	72" x 60"	
BTS-10-7272	12"	72" x 72"	

CAPACITY 15,000 lbs.	MODEL	HEIGHT DIFFERENCE	SIZE (W x L)
	BTS-15-6036	5"	60" x 36"
BTS-15-6048	7"	60" x 48"	
BTS-15-6060	10"	60" x 60"	
BTS-15-6072	12"	60" x 72"	
BTS-15-7236	5"	72" x 36"	
BTS-15-7248	7"	72" x 48"	
BTS-15-7260	10"	72" x 60"	
BTS-15-7272	12"	72" x 72"	

CAPACITY 20,000 lbs.	MODEL	HEIGHT DIFFERENCE	SIZE (W x L)
	BTS-20-6036	5"	60" x 36"
BTS-20-6048	7"	60" x 48"	
BTS-20-6060	10"	60" x 60"	
BTS-20-6072	12"	60" x 72"	
BTS-20-7236	5"	72" x 36"	
BTS-20-7248	7"	72" x 48"	
BTS-20-7260	10"	72" x 60"	
BTS-20-7272	12"	72" x 72"	

CAPACITY 25,000 lbs.	MODEL	HEIGHT DIFFERENCE	SIZE (W x L)
	BTS-25-6036	5"	60" x 36"
BTS-25-6048	7"	60" x 48"	
BTS-25-6060	10"	60" x 60"	
BTS-25-6072	12"	60" x 72"	
BTS-25-7236	5"	72" x 36"	
BTS-25-7248	7"	72" x 48"	
BTS-25-7260	10"	72" x 60"	
BTS-25-7272	12"	72" x 72"	

CAPACITY 30,000 lbs.	MODEL	HEIGHT DIFFERENCE	SIZE (W x L)
	BTS-30-6036	5"	60" x 36"
BTS-30-6048	7"	60" x 48"	
BTS-30-6060	10"	60" x 60"	
BTS-30-6072	12"	60" x 72"	
BTS-30-7236	5"	72" x 36"	
BTS-30-7248	7"	72" x 48"	
BTS-30-7260	10"	72" x 60"	
BTS-30-7272	12"	72" x 72"	

ALUMINUM HAND TRUCK DOCKBOARDS

SERIES: BAHTD- WIDTH LENGTH

Ramps are lightweight and can be carried and positioned by one person. Provides a safe and convenient bridge between dock and truck. Welded aluminum diamond tread surface and beveled edges provide safe and smooth entry and exit. The bend is designed to keep ramp edges flush with dock surface and truck floor. Equipped with bolted locking legs. Full length aluminum curbs provide hand holds and reduce chance of roll off.



MODEL	WIDTH	LENGTH	CAPACITY
BAHTD-3036	30"	36"	800
BAHTD-3048	30"	48"	800
BAHTD-3060	30"	60"	800
BAHTD-3072	30"	72"	800

MODEL	WIDTH	LENGTH	CAPACITY
BAHTD3648	36"	48"	800
BAHTD3660	36"	60"	800
BAHTD3672	36"	72"	800
BAHTD3696	36"	96"	800

Designed for use with two wheel hand trucks only.

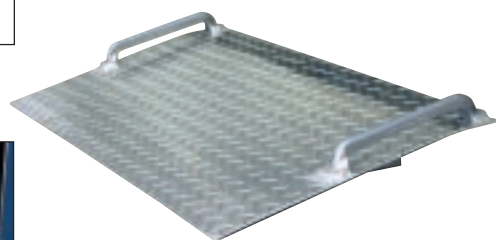
ALUMINUM MINI DOCKPLATES

SERIES: BAMD- WIDTH LENGTH

Scale 3" to 6" curbs and high door thresholds with ease using these durable Aluminum Mini Dockplates. Ideal for use with hand trucks for deliveries. Aluminum construction is lightweight yet durable. Features carrying handle and diamond treadplate surface for better traction.



Designed for use with two wheel hand trucks only.



MODEL	WIDTH	LENGTH	CAPACITY
BAMD-2418	24"	18"	500 lbs.
BAMD-3018	30"	18"	600 lbs.
BAMD-3618	36"	18"	700 lbs.

TRUCK DOCKPLATES

Here's a convenient, safe and easy way to access loading docks from trucks. Lightweight and easily portable by just one person. Treadplate surface ensures skid-resistant safer traction. 11° bend in the plate allows edges to be flush at dock and truck for smooth material transfer. Beveled edges reduce wear and excessive equipment jarring. Locking legs secure the plate for safe loading and unloading. Complete with carrying handles attached to locking legs. Zinc plated legs and handles. Additional sizes available.

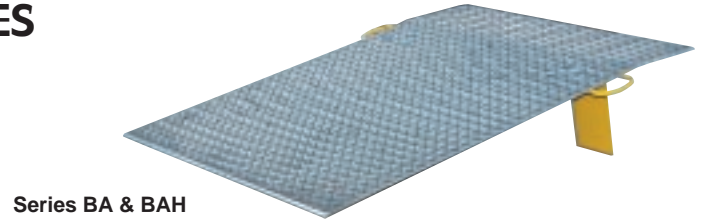
ALUMINUM HAND TRUCK DOCKPLATES

SERIES:BA&BAH- CAPACITY - WIDTH LENGTH

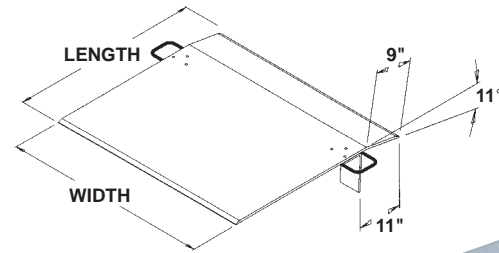
1/4" PLATE THICKNESS		
MODEL	W x L	CAPACITY
BA-3024	30" x 24"	500 lbs.
BA-3030	30" x 30"	500 lbs.
BA-3036	30" x 36"	500 lbs.
BA-3048	30" x 48"	500 lbs.
BA-3624	36" x 24"	500 lbs.
BA-3630	36" x 30"	500 lbs.
BA-3636	36" x 36"	500 lbs.
BA-3648	36" x 48"	500 lbs.

5/16" PLATE THICKNESS		
MODEL	W x L	CAPACITY
BAH3024	30" x 24"	700 lbs.
BAH3030	30" x 30"	700 lbs.
BAH3036	30" x 36"	700 lbs.
BAH3048	30" x 48"	700 lbs.
BAH3624	36" x 24"	700 lbs.
BAH3630	36" x 30"	700 lbs.
BAH3636	36" x 36"	700 lbs.
BAH3648	36" x 48"	700 lbs.

DESIGNED FOR USE WITH TWO WHEEL HAND TRUCKS ONLY



Series BA & BAH



ALUMINUM TRUCK DOCKPLATES

SERIES:BE&BEH- CAPACITY - WIDTH LENGTH

3/8" PLATE THICKNESS		
MODEL	W x L	CAPACITY
BE-3030	30" x 30"	2,300 lbs.
BE-3036	30" x 36"	1,800 lbs.
BE-3048	30" x 48"	1,400 lbs.
BE-3630	36" x 30"	3,000 lbs.
BE-3636	36" x 36"	2,500 lbs.
BE-3648	36" x 48"	1,900 lbs.
BE-4830	48" x 30"	4,100 lbs.
BE-4836	48" x 36"	3,500 lbs.
BE-4848	48" x 48"	2,600 lbs.
BE-4860	48" x 60"	1,800 lbs.
BE-6030	60" x 30"	4,600 lbs.
BE-6036	60" x 36"	4,100 lbs.
BE-6048	60" x 48"	2,900 lbs.
BE-6060	60" x 60"	2,000 lbs.

1/2" PLATE THICKNESS		
MODEL	W x L	CAPACITY
BEH3030	30" x 30"	4,100 lbs.
BEH3036	30" x 36"	3,500 lbs.
BEH3048	30" x 48"	2,600 lbs.
BEH3630	36" x 30"	5,100 lbs.
BEH3636	36" x 36"	4,300 lbs.
BEH3648	36" x 48"	3,000 lbs.
BEH4830	48" x 30"	6,300 lbs.
BEH4836	48" x 36"	5,300 lbs.
BEH4848	48" x 48"	3,800 lbs.
BEH4860	48" x 60"	2,900 lbs.
BEH6030	60" x 30"	7,800 lbs.
BEH6036	60" x 36"	6,600 lbs.
BEH6048	60" x 48"	4,800 lbs.
BEH6060	60" x 60"	3,700 lbs.



Series BE & BEH

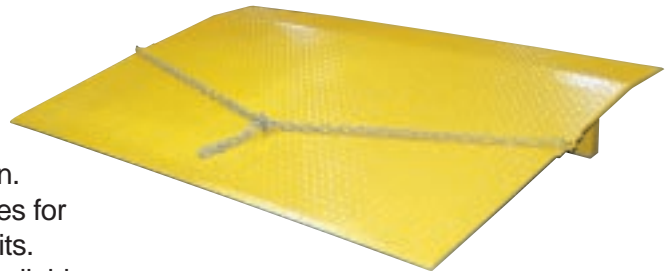
PLATE LENGTH	LEG LENGTH
24"	6"
30"	6"
36"	9"
42"	9"
48"	9"
54"	12"
60"	12"

(2) Bolt-On Zinc Plated One Piece Legs with Handle are standard on both series.

STEEL TRUCK DOCKPLATES

SERIES:BSEorBSEH- WIDTH LENGTH

Constructed of high strength (55,000 psi) steel. Safety locking legs prevent slippage between truck and dock. Raised pattern safety tread plate helps provide positive traction. Steel handles for convenience when positioning. Beveled edges for smooth entry and exit. Chain pickup comes standard on all units. Designed with a 11° bend. Additional sizes and thicknesses available.



MODEL	WIDTH	LENGTH	THICKNESS	CAPACITY
BSE-4830	48"	30"	3/8"	5,000 lbs.
BSE-4836	48"	36"	3/8"	4,125 lbs.
BSE-4848	48"	48"	3/8"	3,090 lbs.
BSE-4860	48"	60"	3/8"	2,475 lbs.
BSE-6036	60"	36"	3/8"	5,150 lbs.
BSE-6048	60"	48"	3/8"	3,860 lbs.
BSE-6060	60"	60"	3/8"	3,090 lbs.

MODEL	WIDTH	LENGTH	THICKNESS	CAPACITY
BSEH-4830	48"	30"	1/2"	8,800 lbs.
BSEH-4836	48"	36"	1/2"	7,300 lbs.
BSEH-4848	48"	48"	1/2"	5,500 lbs.
BSEH-4860	48"	60"	1/2"	4,400 lbs.
BSEH-6036	60"	36"	1/2"	9,160 lbs.
BSEH-6048	60"	48"	1/2"	6,875 lbs.
BSEH-6060	60"	60"	1/2"	5,500 lbs.

TRUCK DOCKBOARD SURVEY & ACCESSORIES

TRUCK DOCKBOARD SURVEY SHEET

1 Description

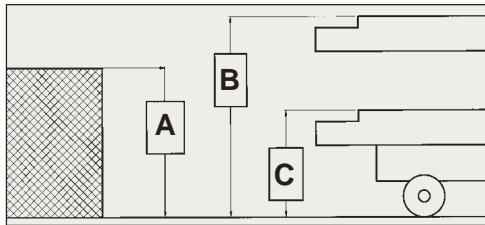
Dockboards (side curbs) are for use with fork trucks. Dockplates (no side curbs) are for use primarily with two and four wheel hand trucks and pallet jacks.

3 Aluminum vs. Steel

Steel is recommended for high traffic areas. Aluminum provides portability and convenience.

5 Calculating Height Differential

To determine **Maximum Height Difference** fill in dimensions A, B & C. Subtract dimensions A from dimensions B [(B) - (A)], then subtract dimensions C from dimension A [(A) - (C)]. The larger of these two numbers is the **Maximum Height Difference**.



A = Dock Height
B = Highest Trailer
C = Lowest Trailer

GUIDE TO TRAILER FLOOR HEIGHTS (empty)

Refrigerated	54" - 61"
Heavy Flat Bed Trailers	51" - 56"
Heavy Semi-Trailers	48" - 54"
Light Semi-Trailers	45" - 49"
Large Single Bed	42" - 50"
Small Single Bed	30"

2 Determining Width

Width of dockboard should be at least 15" wider than load or equipment passing between curbs. If load does not pass between curbs but is elevated above, add 15" to overall width of equipment. (*Usable width is approximately 6" less than overall width*).

4 Calculating Capacity

Capacity = Load + Weight of Fork Truck (Pallet Truck)

6 Determining Length

Length is based on Percent of Grade & Maximum Height Difference.

Two-Wheel Hand Truck	12°/21%
Four-Wheel Platform Truck - Non-Tilt	11°/19%
Pallet Trucks - Hand	8°/14%
Pallet Trucks - Electric	7°/12%
Platform (Skid) Trucks - (Hand-Walker)	8°/14%
Platform (Skid) Trucks - (Electric-Walkie)	7°/12%
Fork Trucks - Electric Walkies	7°/12%
Fork Trucks - Electric Rider	8°/14%
Fork Trucks - Gas Rider	11°/19%

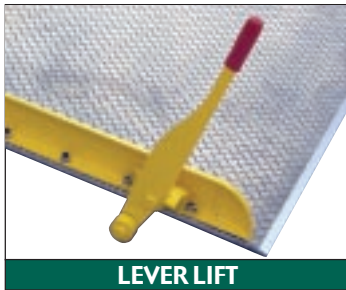
Ht. Diff. (Electric Fork Truck)	Ht. Diff. (Gas Fork Truck)	Length
8° / 14%	11° / 19%	30"
3"	4"	36"
4"	5"	42"
5"	6"	48"
5-1/2"	7"	54"
6"	8-1/2"	60"
7"	10"	66"
8"	11"	72"
8-1/2"	12"	78"
9"	13"	84"
10"	14"	90"

TRUCK DOCKBOARD ACCESSORIES



LIFTING CHAINS

Now boards can be quickly and easily moved with a forklift. Heavy duty chains lock onto dockboard curbs with rugged steel hooks and locked by screw and knob type locking pad. Removes in seconds. **Suffix - BLC**



LEVER LIFT

Manual lever lift raises the dockboard off the floor for easy forklift truck positioning. Lever falls to rest automatically when board is lifted. Standard on steel dockboards, series BTS. **Suffix - BALL**



SLIDING SPAN LOCKS

Rugged steel span locks secure dockboard in place when the span between the dock and vehicle is greater than the understructure stops. The 11-1/2" long lock eliminates slipping or sliding. **Suffix - BSSL**



WHEEL & HANDLE KIT

Now, easily roll your dockboard to the dock area. Tip and turn the dockboard on to wheels for total maneuverability. Steering handles assist with lifting and steering. **Suffix - BWHHDL**

Beacon Industries, Inc.

12300 Old Tesson Rd.

St. Louis, MO 63128-2247 USA

Phone: (314) 487-7600 Fax: (314) 487-0100

www.beacontechnology.com

E-Mail: sales@beacontechnology.com