

# PROTECTIVE BARRIERS

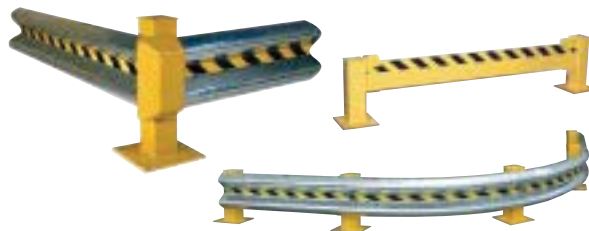
## PROTECTIVE BARRIERS

FOR PEOPLE AND PROPERTY

### APPLICATIONS

- ◆ Inner Plant Offices
- ◆ Shipping & Receiving Areas
- ◆ Aisle Ways
- ◆ Personnel Protection
- ◆ Parking Lots
- ◆ Racks & Shelves
- ◆ Specialty Machinery
- ◆ Mezzanines
- ◆ Recreation Areas
- ◆ Mezzanines

### GUARD RAIL SYSTEMS



### SAFETY BOLLARDS



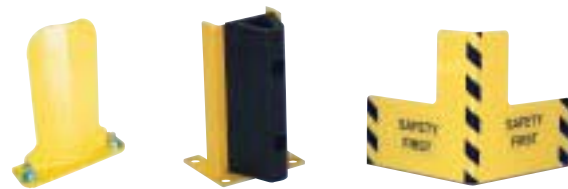
### MACHINERY & RACK GUARDS



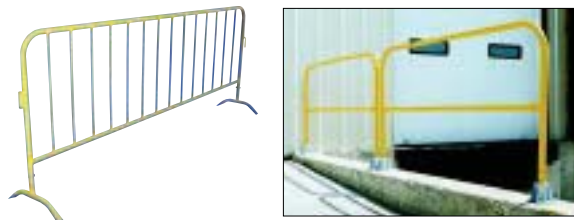
### COLUMN & PIPE PROTECTORS



### RACK GUARDS



### SAFETY RAILING



### GUIDANCE BARRIERS / GATES / MISC.



**Beacon Industries, Inc.**  
12300 Old Tesson Rd.  
St. Louis, MO 63128-2247 USA  
Phone: (314) 487-7600 Fax: (314) 487-0100  
[beacontechnology.com](http://beacontechnology.com)  
E-Mail: [sales@beacontechnology.com](mailto:sales@beacontechnology.com)

## INDUSTRIAL GUARD RAIL



Protect the row ends of tandem pallet racking with this heavy duty, welded steel adjustable rack guard. Slide in design has a variable width range of 78" to 108". Includes steel mounting plates with 1" dia. holes to safely secure unit to floor. Powder coat safety yellow finish.

MODEL	DESCRIPTION	LENGTH	HEIGHT
BARMG-24	Structural Steel	78" to 108"	24"
BARMG-ABK	Mounting Kit (12) 3/4" x 4" Anchor Bolts		

## CONCRETE ANCHORING HARDWARE



(4) Anchors and  
(1) Masonry Bit Shown

Install Rack, Column and Machinery Guards quickly and easily with Concrete Anchoring Hardware. To install mark hole placement of guard, drill into concrete with Masonry Bit, realign guard and secure with anchor bolts.

MODEL	DESCRIPTION	SIZE
BHKIT-1	(1) Masonry Bit	3/4"
BHKIT-2	(2) Anchor Bolts	3/4"D x 4"L
BHKIT-3	(4) Anchor Bolts	3/4"D x 4"L

## WALL CORNER GUARDS



Scratch Resistant Great for  
Indoor or Outdoor Use

- Impact resistant, rust proof
- Shock absorbing hollow construction
- Safety yellow for high visibility
- Polyethylene construction
- Protects and deflects
- 3/8" diameter holes for anchor bolts  
(hardware not included)

MODEL	MATERIAL	OVERALL SIZE
BVCP-40	Polyethylene	10"W x 40-1/2"H x 2-1/4"D

## WALL PROTECTOR



Protect Your Most  
Expensive Asset  
Your Building

- Polyethylene construction
- Safety yellow for high visibility
- Protects and deflects
- Scratch resistant
- For Indoor or Outdoor Use
- 3/8" diameter counter sunk holes  
for anchor bolts (hardware not included)

MODEL	WIDTH	HEIGHT	PROJECTION
BVBG-48	48"	6-1/4"	2-1/4"