

BM1 Series

Truck Service

MECHANICAL DOCK LEVELER 25,000 & 30,000 lb. CAPACITIES

CONTRACTOR MODEL

Beacon Industries, Inc.
 12300 Old Tesson Rd.
 St. Louis, MO 63128-2247 USA
 Phone: (314) 487-7600 Fax: (314) 487-0100
www.beacontechology.com
 E-Mail: sales@beacontechology.com



ARCHITECTURAL SPECIFICATIONS

GENERAL

The BM1 Series pit mounted mechanical dock levelers are available in one contractor economical style.
BM1 Series - Two movement with 16" hinged flip lip.

DESCRIPTION

Adjustable mechanical dock leveler with two movements: (1) Up, (2) down. Dock leveler to be _____ ft. long x _____ ft. wide with a static capacity of _____ lbs. Platform to be constructed of floor plate reinforced by C channel deck support beams. 16 in. hinged flip lip to be activated mechanically when deck comes up. 24" total Vertical travel, 12" above floor level and 12" below floor level. Deck will compensate a maximum of 4" from side to side to service unlevel vehicles. Dock leveler is constructed of 55,000 lb. minimum yield steel tread plate. Dock leveler to be equipped with toe guards and a set of dock bumpers. Dock leveler to meet or exceed the performance requirements of CS202-56., OSHA and ANSI MH14.1-1984.

SCOPE

This specification describes a manual operated, adjustable mechanical dock leveler, to be installed in a pit and/or affixed to loading platforms and to compensate for uneven heights between the truckbed and the dock.

DIMENSIONS

NOTE:
 The sizes below are nominal lengths.

MODEL	CAPACITY	SIZE WIDTH	NOMINAL LENGTH	DEPTH	THICKNESS LIP	DECK	WEIGHT
BM16625	25,000	72"	6'	19"	1/2"	3/16"	1,250
BM16825	25,000	72"	8'	19"	1/2"	3/16"	1,490
BM17625	25,000	83"	6'	19"	1/2"	1/4"	1,400
BM17825	25,000	83"	8'	19"	1/2"	1/4"	1,700
BM16630	30,000	72"	6'	19"	1/2"	1/4"	1,290
BM16830	30,000	72"	8'	19"	1/2"	1/4"	1,530
BM17630	30,000	83"	6'	19"	1/2"	1/4"	1,450
BM17830	30,000	83"	8'	19"	1/2"	1/4"	1,750

Additional models and capacities available, consult factory.

OPERATION

The Beacon BM1 Mechanical dock leveler is easy to operate, engaged and activated by pulling the chain release mechanism at the rear of the leveler. The lip will extend and lock in position automatically. To unlock the leveler, simply walk the unit down, the unit will rest on the truck bed and the lock will automatically release. To retract legs for below dock service, pull up on the chain assembly in front center of deck and walk the unit down to the level that is needed.

CONSTRUCTION

The capacities of the BM1 are available in 25,000 and 30,000 lb. The direct extension spring counter balance has no moving parts. Structural C channel deck support beams are 100% welded to the back of the header plate. Deck shall be 3/16" on the BM16625 and BM16825 and 1/4" on all others. Lip shall be 1/2" thick. Lip Hinge and Deck assembly shall be 1/4" Wall seamless tubing and 1" cold roll 1045 steel rod. Deck and Lip shall be 55,000 minimum yield steel tread plate. Grease fittings on lip hinges are standard. All levelers include fork entry slots and lifting holes in the side plates for ease of handling during shipping and installation.

SAFETY EQUIPMENT

RAMP SIDES: The sides of the ramp shall be provided with steel safety toe guards. The Beacon lip keepers are installed for your protection while in storage, at installation and for night security along with providing safe and secure cross traffic support. Dual safety legs provide metered below dock control points at 1" and

8". A maintenance strut is provided with each leveler. Two 4" x 10" x 13" molded dock bumpers shall be supplied with each dock leveler.

OPTIONAL FEATURES

- Full Range Toe Guards.
- Weather Seals.
- Below Dock Control (lip push-out device).
- Base Frame Deep Pit Anchor Kit (4" channel for 23" deep pit) welded at factory.
- Foam insulation.
- Abrasive Surface.
- Self-forming pan with bottom (leveler welded in).
- EZ Pan (Self-forming) assembled at job site.
- Pit Curb Angle Kit.
- Yellow & Black Diagonal Striping on Sides.

PAINT

Beacon Grey

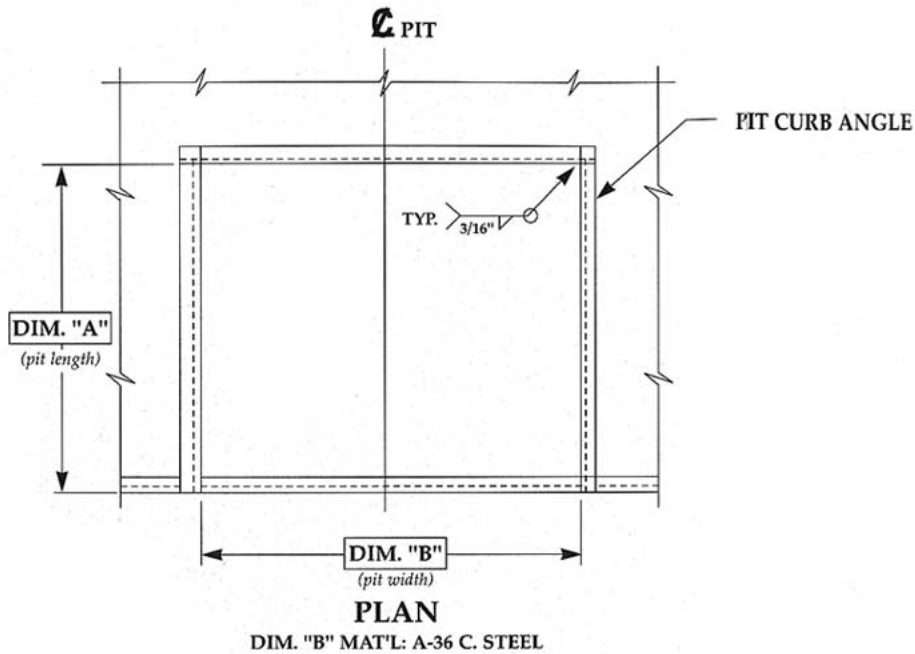
OWNERS MANUAL

Owners Manual comes with each unit, including General Information, Pit preparation, Leveler preparation, Anchoring Instructions, Operating Instructions, Troubleshooting, Parts List.

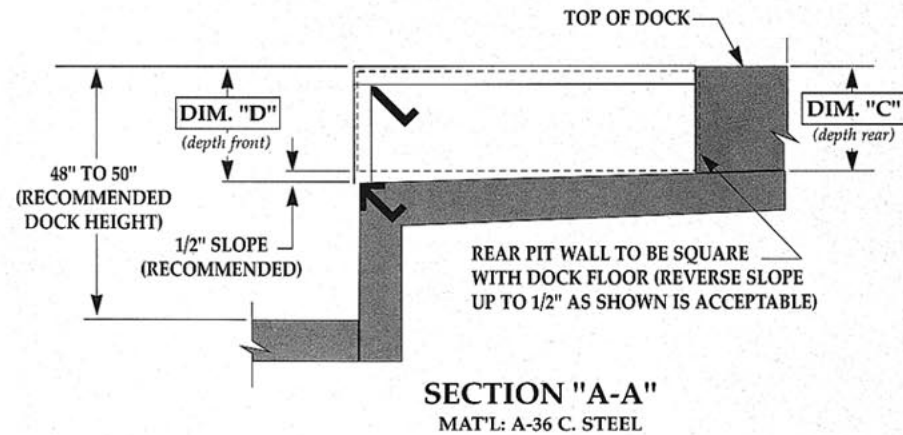
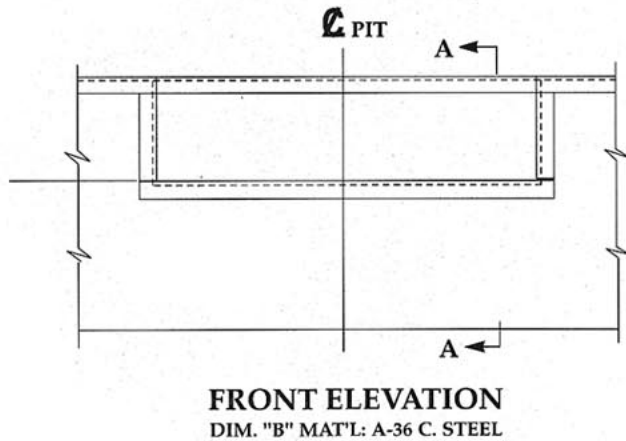
WARRANTY

The BM1 Series comes with a Limited Warranty - 1 year on structural members and main springs, 1 year on mechanical and miscellaneous parts.

BEACON BM1 Series Mechanical Dock Leveler Pit Detail



VARIABLE DIMENSIONS				
MODEL SIZE	"A"	"B"	"C"	"D"
6'W X 6'L	63"	74"	19½"	20"
6'W X 8'L	87"	74"	19½"	20"
7'W X 6'L	63"	85"	19½"	20"
7'W X 8'L	87"	85"	19½"	20"
INSERT SPECIFIC JOB DIMENSIONS FROM CHART				



NOT TO SCALE

NOTES

JOB

DRAWN: D.E.A.	SCALE: AS NOTED	DATE: 5-15-96	DRAWING NUMBER: PMI-2010
------------------	--------------------	------------------	-----------------------------

TOLERANCES:		
Inch Dimension = ± 1/16"	Decimal Dimension = ± .005	Angles = ± 1°