

BH5 Series Truck Service

HYDRAULIC DOCK LEVELER 25,000, 35,000 & 45,000 lb. CAPACITIES

ARCHITECTURAL SPECIFICATIONS

GENERAL

The BH5 Series pit mounted hydraulic dock levelers are available in one heavy duty style.

BH5 Series - Two movement with 16" hinged flip lip.

DESCRIPTION

Adjustable hydraulic dock leveler with two movements: (1) Up, (2) down. Dock leveler to be _____ ft. long x _____ ft. wide with a static capacity of _____ lbs. Platform to be constructed of floor plate reinforced by C channel deck support beams. The units are powered with a 1 h.p., 1½ GPM pump that activates the deck hydraulic cylinder. The deck and 16" hinged flip lip extends onto the vehicle when the start button is depressed. The BH5 Leveler automatically recycles to stored cross traffic position when the vehicle departs or may be recycled with the vehicle at the dock. 24" total Vertical travel, 12" above floor level and 12" below floor level. Deck will compensate a maximum of 4" from side to side to service unlevel vehicles. Dock leveler is constructed of 55,000 lb. minimum yield steel tread plate. Dock leveler to be equipped with full operating range toe guards and a set of dock bumpers. Dock leveler to meet or exceed the performance requirements of CS202-56., OSHA and ANSI MH14.1-1984.

SCOPE

This specification describes a push button control hydraulic operated adjustable recycle dock leveler, to be installed in a pit and/or affixed to loading platforms and to compensate for uneven heights between the truckbed and dock.

DIMENSIONS

NOTE:

The sizes below are nominal lengths.

MODEL	CAP. (LBS.)	WIDTH	DEPTH	NOMINAL LENGTH	WEIGHT
BH56625	25,000	72"	19"	6'	1605
BH56625.5	25,000	78"	19"	6'	1672
BH57625	25,000	83"	19"	6'	1690
BH56825	25,000	72"	19"	8'	1785
BH56825.5	25,000	78"	19"	8'	1860
BH57825	25,000	83"	19"	8'	2114
BH561025	25,000	72"	24"	10'	2012
BH561025.5	25,000	78"	24"	10'	2095
BH571025	25,000	83"	24"	10'	2124
BH56635	35,000	72"	19"	6'	1658
BH56635.5	35,000	78"	19"	6'	1707
BH57635	35,000	83"	19"	6'	1755
BH56835	35,000	72"	19"	8'	1940
BH56835.5	35,000	78"	19"	8'	2021
BH57835	35,000	83"	19"	8'	2172
BH561035	35,000	72"	24"	10'	2061
BH561035.5	35,000	78"	24"	10'	2147
BH571035	35,000	83"	24"	10'	2170
BH56645	45,000	72"	19"	6'	1708
BH56645.5	45,000	78"	19"	6'	1779
BH57645	45,000	83"	19"	6'	1794
BH56845	45,000	72"	19"	8'	1990
BH56845.5	45,000	78"	19"	8'	2073
BH57845	45,000	83"	19"	8'	2231
BH561045	45,000	72"	24"	10'	2075
BH561045.5	45,000	78"	24"	10'	2161
BH571045	45,000	83"	24"	10'	2186



OPERATION

The Beacon BH5 Hydraulic dock levelers are simple to operate and are single remote controlled for all stages of operation. When raising the Beacon deck, you will find the deck and lip action fully automatic. When the Beacon deck is raised the lip automatically extends, the deck and lip descend to the floor of the truck trailer when the button is released. The BH5 Series automatically recycles when the trailer departs. For below dock tailgate loading or unloading, turn the selector to below dock mode, when the deck is raised the lip clears the keepers and the unit descends to the bottom of the pit.

CONSTRUCTION

The capacities of the BH5 are available in 25,000, 35,000 and 45,000 lb. Structural C channel deck support beams are 100% welded to the back of the ¾" x 6" header plate, (½" x 6" on 35 & 45M); 6 each under 6' wide models and 8 each under 7' wide models. Deck shall be ¼" Thick, Lip shall be ½" Thick on our 25,000 lb. capacities and ⅝" on our 35,000 and 45,000 lb. capacities. Lip Hinge and Deck assembly shall be ¼" Wall seamless tubing with a 1" cold roll 1045 steel rod for our 25,000 capacities and ⅝" on our 35,000 and 45,000 lb. capacities. Deck and Lip shall be 55,000 minimum yield steel tread plate. All levelers include fork entry slots and lifting holes in the side plates for ease of handling during shipping and installation.

HYDRAULICS

1½ GPM hydraulic pump. Hydraulic deck and lip with automatic return to dock. Main cylinder to be 4" diameter bore with 2" diameter ram. BH5 is equipped with an in line safety valve to prevent leveler deck from free fall in case of premature trailer departure.

ELECTRICAL

The BH5 series electrohydraulic unit is complete with a 1 h.p. totally enclosed motor to be factory tested and wired for 115V or 230V, 1 PH. 60 HZ; or 230V or 460V, 3 PH. 60 HZ as specified. All functions will be controlled by proximity sensors and to be void of any solenoid valves, chain or cable operated valves including mercury or limit switches. All operations to be push button controlled from a single pre-wired NEMA 12 wall-mounted remote. All electrical hook-ups are by others.

Beacon Industries, Inc.
12300 Old Tesson Rd.
St. Louis, MO 63128-2247 USA
Phone: (314) 487-7600 Fax: (314) 487-0100
www.beacontechnology.com
E-Mail: sales@beacontechnology.com

SAFETY EQUIPMENT

RAMP SIDES: The sides of the ramp shall be provided with full operating range steel safety toe guards. The Beacon lip keepers are installed for your protection while in storage, at installation and for night security along with providing safe and secure cross traffic support. An in-line safety stop prevents sudden fall while loading should the leveler become unsupported by the trailer. A maintenance strut is provided with each leveler. Two 4" x 12" x 14" molded dock bumpers shall be supplied with each dock leveler.

OPTIONAL FEATURES

- 3 Phase motor.
- Weather Seals.
- Lip 18" (14" projection).
- Lip 20" (16" projection).
- Base Frame Deep Pit Anchor Kit (4" channel for 23" deep pit) welded at factory.
- Emergency Stop Feature.
- Independent Lip Control.
- Foam insulation.
- Abrasive Surface.
- Self-forming pan with bottom (leveler welded in).
- EZ Pan (Self-forming) assembled at job site.
- Pit Curb Angle Kit.
- Yellow & Black Diagonal Striping on Sides.

PAINT

Beacon Grey

OWNERS MANUAL

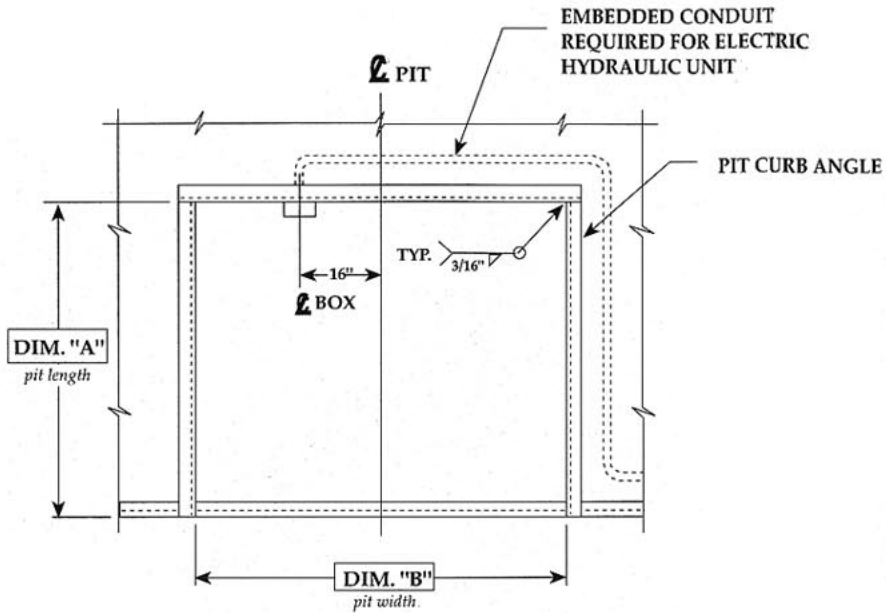
Owners Manual comes with each unit, including General Information, Pit preparation, Leveler preparation, Anchoring Instructions, Wiring Diagram, Operating Instructions, Troubleshooting, Parts Listed.

WARRANTY

The BH5 Series comes with a Limited Warranty - 5 years on structural members, cylinders and proximity sensors, 1 year on motor/pump and miscellaneous parts. **Special Warranty Note: Beacon will match any other company's warranty, just present to Beacon for written approval.**

Heavier Capacity Units can be found in the BEACON HEAVY DUTY LOADING DOCK BUYERS GUIDE

BEACON BH5 Series Hydraulic Dock Leveler Pit Detail

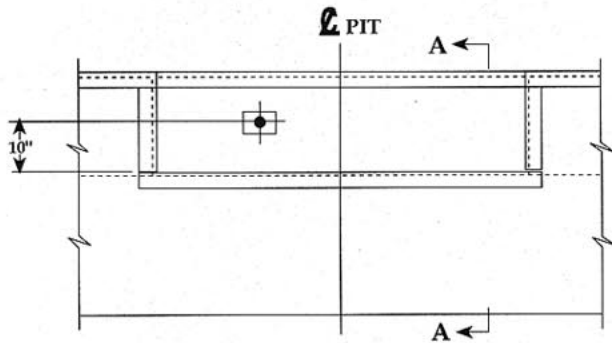


PLAN
MAT'L: A-36 C. STEEL

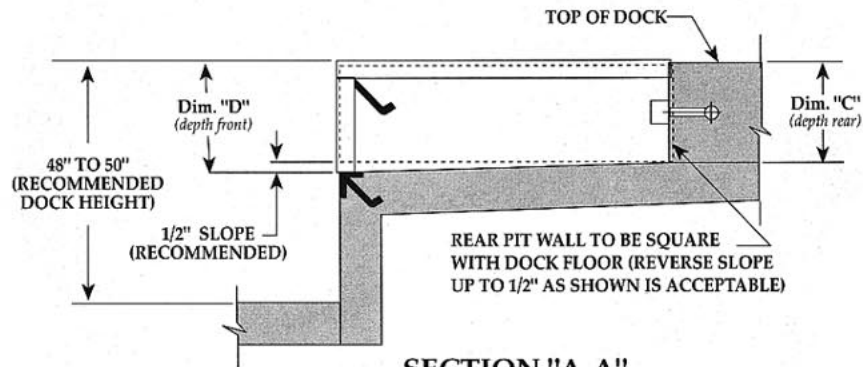
VARIABLE DIMENSIONS				
MODEL SIZE	"A"	"B"	"C"	"D"
6'W x 6'L	63"	74"	19½"	20"
6'W x 8'L	87"	74"	19½"	20"
6'-6"W x 6'L	63"	80"	19½"	20"
6'-6"W x 8'L	87"	80"	19½"	20"
7'W x 6'L	63"	85"	19½"	20"
7'W x 8'L	87"	85"	19½"	20"
6'W x 10'L	111"	74"	23½"	24"
6'-6"W x 10'L	111"	80"	23½"	24"
7'W x 10'L	111"	85"	23½"	24"

INSERT SPECIFIC JOB DIMENSIONS FROM CHART

--	--	--	--	--



FRONT ELEVATION
MAT'L: A-36 C. STEEL



SECTION "A-A"
MAT'L: A-36 C. STEEL

NOT TO SCALE

NOTES

JOB

DRAWN:	SCALE:	DATE:	DRAWING NUMBER:
J.M.G.	AS NOTED	1/30/95	PMI-2014 -R1
TOLERANCES:			
Inch Dimension =	Decimal Dimension =	Angles =	
± 1/16"	± .005	± 1°	