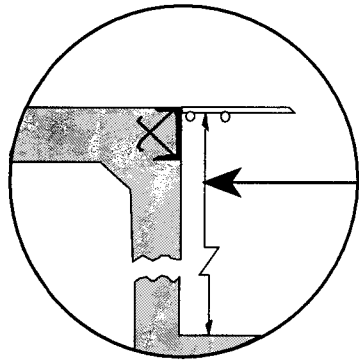
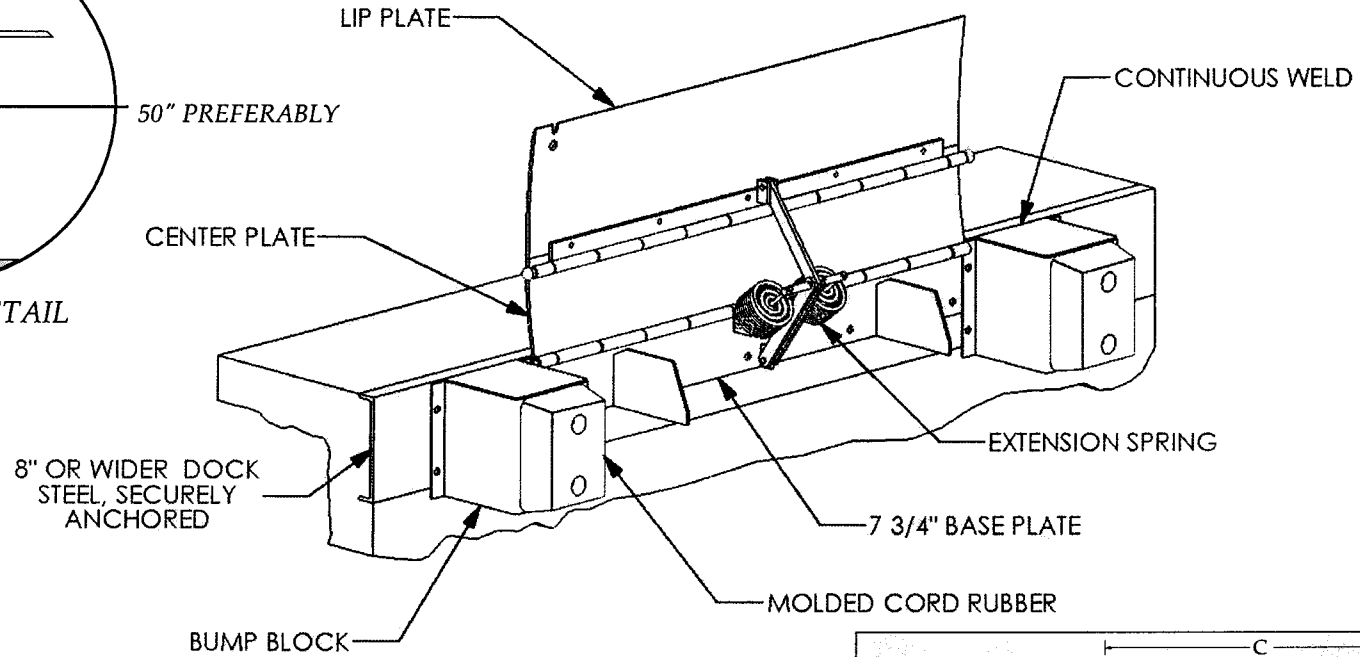


BEDE Submittal Drawing



SECTION DETAIL



NOTES: Deck & Lip - 55,000 lb. min. yield steel.

	A	B	C	D	E	F
Model	Lip Length	Span	Deck Width	Overall Width	Rollover Capacity Lbs.	Plate Thickness
BEDE66	15"	27 3/4"	66"	96"	20,000	3/8"
BEDE66H	15"	27 3/4"	66"	96"	25,000	7/16"
BEDE72	15"	29 3/4"	72"	102"	20,000	3/8"
BEDE72H	15"	27 3/4"	72"	102"	25,000	7/16"

SPECIFY JOB REQUIREMENTS FROM CHART

--	--	--	--	--	--

BEACON INDUSTRIES, INC.
 12300 Old Tesson Road, St. Louis, MO 63128-2247
 Ph: 314-487-7600 USA - Toll Free 800-454-7159 - Fax: 314-487-0100

JOB