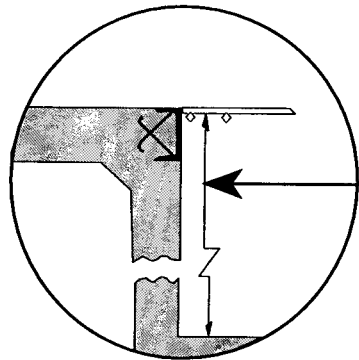
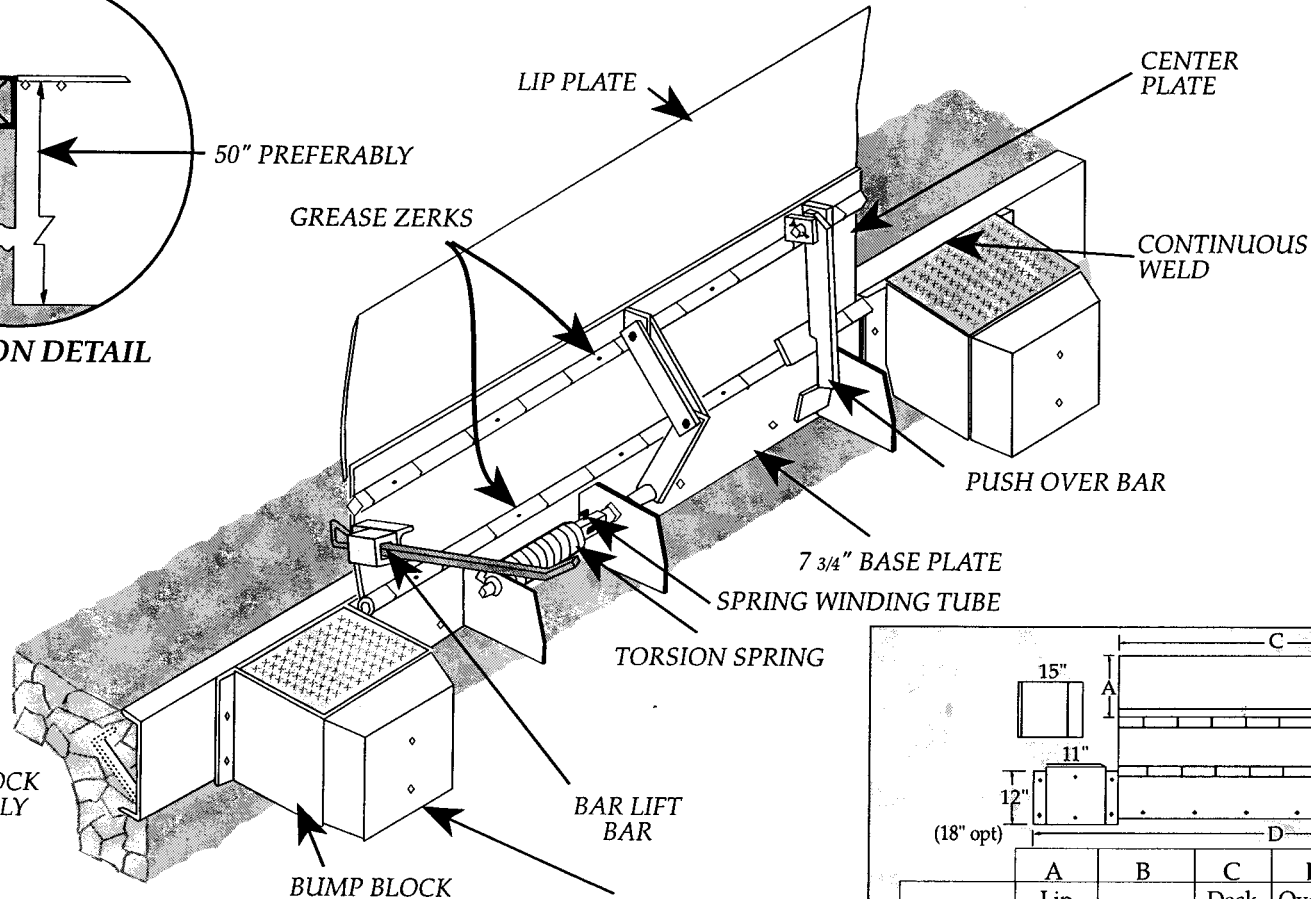


BBL Bar Lift Submittal Drawing



SECTION DETAIL



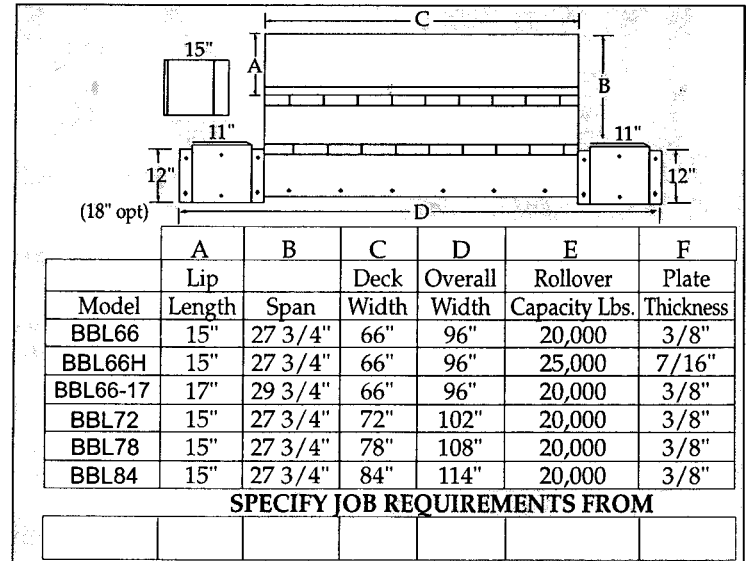
8" OR WIDER DOCK
STEEL- SECURELY
ANCHORED

BUMP BLOCK

BAR LIFT
BAR

MOLDED
CORD RUBBER

NOTES: Deck & Lip - 55,000 lb. min. yield steel.
30,000 lb Capacity Units include C1045
cold rolled 11/16" rod and cold drawn
seamless tubing (1-1/4" OD, 5/16" wall).



BEACON INDUSTRIES, INC.

12300 Old Tesson Road, St. Louis, MO 63128-2247

Ph: 314-487-7600 USA - Toll Free USA 800-454-7159 - Fax: 314-487-0100

JOB