

Beacon Industries, Inc.

12300 Old Tesson Rd. • St. Louis, MO 63128-2247 USA

Phone: (314) 487-7600 Fax: (314) 487-0100

www.beacontechnology.com

E-Mail: sales@beacontechnology.com

Revised 05-02

Ergonomic Solutions

OWNER'S MANUAL

AUTO-HITE CARTS • MODEL BSCSC

Contents

Warnings And Safety Instructions	1	Spring Adjustment	2
Periodic Maintenance Instructions	1	Exploded Drawing & Parts List	3
Receiving Instructions	1	Warning Label Identification	4
Warranty	1		

WARNINGS & SAFETY INSTRUCTIONS

Read owner's manual completely before operating unit!

- Never load the unit unless you are watching it.
- Stand clear from load while loading and unloading.
- Never exceed the maximum loading capacity inscribed on the nameplate.
- Load unit as uniformly as possible.
- Consult factory for uneven loading.
- Always operate unit on a level surface to insure stability.
- Always apply wheel brakes when unit is not been moved.
- Use caution in moving a loaded cart; avoid obstructions and floor defects.
- Remove weight before working on unit.
- Never go under platform if there is weight on unit.
- Use only maintenance parts supplied or approved by the manufacturer.
- Consult factory if adding or performing any modification to the original equipment.
- Make sure all operator safety labels are in place (p.4).

RECEIVING INSTRUCTIONS

Every unit is thoroughly tested and inspected prior to shipment. However, it is possible that the unit may incur damage during transit. If damage is noticed when unloading, make a note of it on the **BILL OF LADING**. Remove all packing and strapping material, then inspect the unit again for damage. **IF DAMAGE IS EVIDENT, FILE A CLAIM WITH THE CARRIER IMMEDIATELY!**

WARRANTY

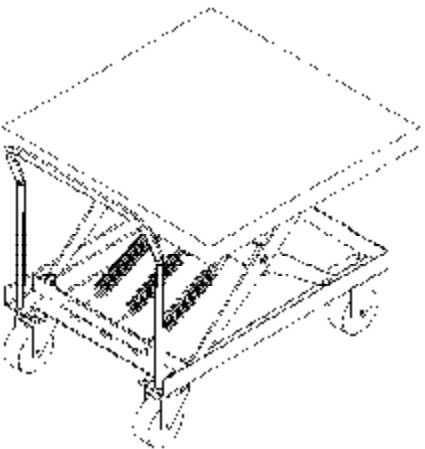
This product is warranted for 90 DAYS from date of purchase to be free of manufacturing defects in material and workmanship.

This warranty does not cover normal wear of parts or damage resulting from any of the following: negligent use or misuse of the product, use or application contrary to installation instructions, or disassembly, repair or alteration by any person prior to authorization from a factory representative.

PERIODIC MAINTENANCE INSTRUCTIONS

Before Each Use Check For The Following:

- 1.) Structural deformation of legs or deck.
- 2.) Unusual noise or binding.
- 3.) Pivot points for wear.
- 4.) Rollers for looseness and wear.
- 5.) Retaining rings at rollers.
- 6.) Clean off dirt and debris.
- 7.) Make sure all warning labels are in place and in good condition. See page 4.



**AUTO-HITE CARTS
BSCSC SERIES**

DO NOT USE IF THERE ARE ANY OF THE ABOVE!

SPRING SCISSORS CART ADJUSTMENT PROCEDURES

GENERAL OPERATION:

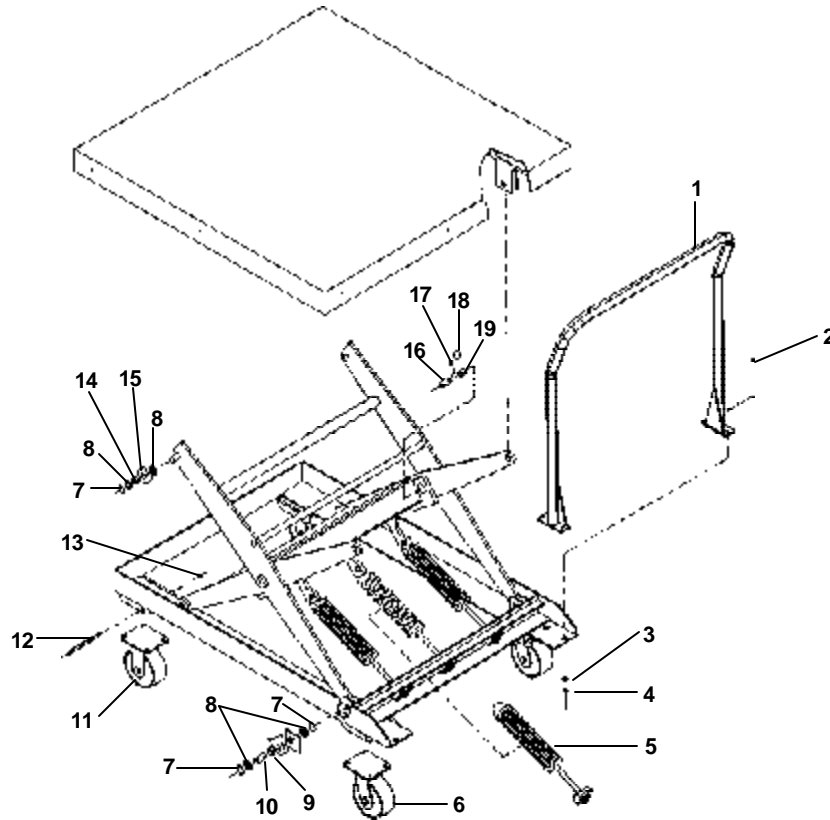
Extension springs are attached to the scissors leg assembly. The springs are arranged to extend as the platform height decreases. As the table is loaded (platform height decreases) the springs extend, thus increasing the load carrying capacity of the springs and subsequently counter balancing the load on the table. By changing the length of the spring, the amount of load to be counterbalanced can be varied.

ADJUSTMENT PROCEDURES:

- 1) Determine the approximate total weight of load the weight of the load per layer being loaded/unloaded. The platform will travel consistently if the load per layer is at least 10% of the total load. (ie 500 lbs. total load = 50 lbs. per layer) If your load is less than 10% the platform may into have the same distance travel per layer for each layer loaded/unload. As with the adjustment, the best way to establish this is by trial and error.
- 2) Locate the spring assembly (PT# 01646001) bolt head. This is located on the cart frame below the push handle.
- 3) With the full load on the platform (WARNING! Do Not Exceed the Rated Capacity of the Unit), adjust the spring assembly bolts (CAUTION! Always Equally Turn Each Bolt) until the platform is just touching the lowered height stops. This can be checked by pushing down on the load or lightly lifting the load (Be Sure NOT to have Hands Under Platform). Rotate the bolts clockwise to increase the load carrying capacity and counterclockwise to decrease the load carrying capacity of the springs. This should provide an even travel per layer of load. Repeat this procedure for each load change.

NOTE: The table height can be adjusted within the full travel by adjusting the springs to limit or increase the table travel.

PARTS IDENTIFICATION SCSC SERIES AUTO-HITE CARTS

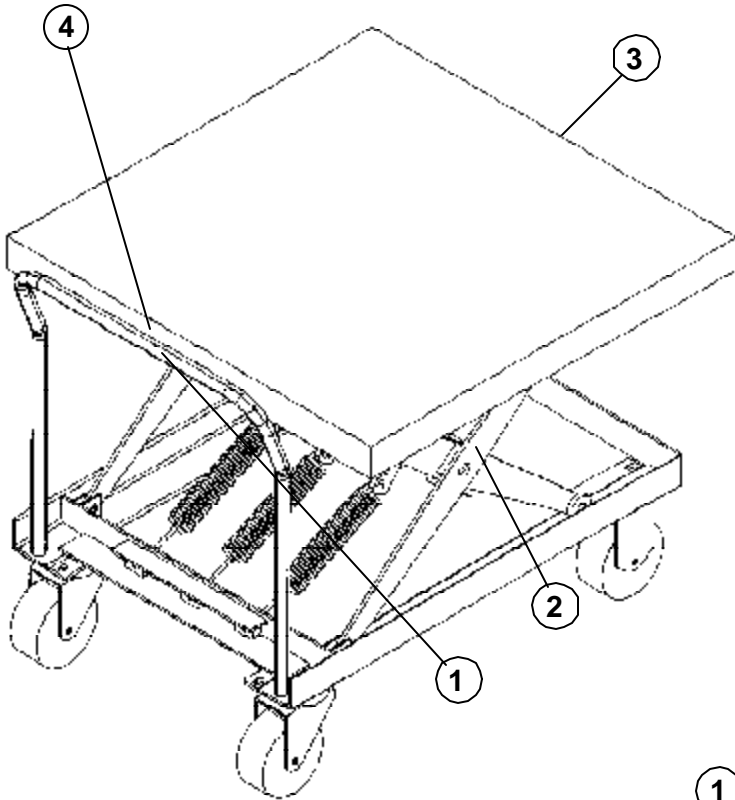


ITEM NO.	DESCRIPTION	PART NO.	QTY
1	Handle	B01525002	1
2	Bolt, 3/8"-16 x 1-1/4" (HHCS)	A/L	2
3	Washer, 3/8" flat SAE	A/L	2
4	Nut, 3/8"-16 (nylon insert lock nut)	A/L	2
5	Spring assembly [SCSC-500-2040/4242 only]	B01646001	2
	Spring assembly [SCSC-1000-4242 only]	B01646001	4
6	Swivel caster	B16132053	2
7	Retainer snap ring, 3/4" external	A/L	12
8	Spacer, 3/4" ID x 1-1/4" OD x 18ga	B01113001	16
9	Hinge bushing, 3/4" ID x 3/8"	B01111004	4
10	Hinge pin, 3/4" dia. x 1-7/16"	B01112009	4
11	Rigid caster	B16132022	2
12	Bolt, 3/8"-16 x 5"	A/L	4
13	Nylock nut, 3/8"-16	A/L	4
14	Roller bushing, 3/4" ID x 1/2"	B01111008	4
15	Roller	B01027002	4
16	Axle pin, 1-1/8" dia. x 2-11/16"	B01112008	2
17	Axle spring pin, 3/16" dia. x 1-1/8"	A/L	2
18	Shim, 3/4" ID x 1-1/2" OD x 10ga (Fastenal)	B33427	2
19	Axle bushing, 1-1/8" ID x 3/4"	B01111002	2

A/L Available at local hardware store

WARNING LABEL IDENTIFICATION

MAKE SURE ALL WARNING LABELS ARE IN PLACE!



Product safety signs or labels should be periodically inspected and cleaned by the product users as necessary to maintain good legibility for safe viewing distance.
ANSI 535.4 (10.21)
Contact manufacturer for replacement labels.

1

⚠ CAUTION
DO NOT OBSTRUCT PLATFORM
⚠ PRECAUCION
NO OBSTRUYA LA PLATAFORMA
⚠ PRUDENCE
NE PAS ENCOMBRER LA PLATE-FORME
304

2

⚠ WARNING	⚠ AVISO	⚠ AVERTISSEMENT
KEEP CLEAR WHEN IN USE	MANTENGASE ALEJADO CUANDO SE ESTA OPERANDO	SE TENIR À DISTANCE LORS DU FONCTIONNEMENT 220

3

⚠ WARNING	⚠ AVISO	⚠ AVERTISSEMENT
KEEP CLEAR OF PINCH POINT	MANTENGASE ALEJADO DE PUNTO DE CORTE	SE TENIR À DISTANCE DU POINT DE PINCEMENT 208

4

⚠ DANGER ⚠ PELIGRO ⚠ ATTENTION	TO AVOID PERSONAL INJURY READ OWNER'S MANUAL BEFORE OPERATING OR REPAIRING SCISSOR LIFT PARA EVITAR DAÑOS PERSONALES LEA EL MANUAL DEL PROPIETARIO ANTES DE OPERAR O REPARAR EL ELEVADOR DE TIJERAS POUR ÉVITER TOUTE BLESSURE PERSONNELLE LIRE LE MANUEL D'UTILISATION AVANT DE METTRE EN MARCHÉ OU AVANT DE RÉPARER L'ÉLEVATEUR CISEAU	DO NOT PUT HANDS, FEET OR OBJECTS UNDER TOP. LOWER PLATFORM SLOWLY. NO PONGA MANOS, PIES U OBJETOS DEBAJO DEL BORDE. DESCienda LA PLATAFORMA LENTAMENTE. NE PAS METTRE LES MAINS, LES PIEDS OU TOUT OBJET SOUS LE PLATEAU SUPÉRIEUR. DESCENDRE LA PLAT-FORME LENTEMENT	DO NOT WORK UNDER LIFT WITHOUT SAFETY BLOCK OR WHILE LOADED. KEEP CLEAR OF MOVING SCISSOR LEG MECHANISM. NO TRABAJE DEBAJO DEL ELEVADOR SIN LOS FRENOS DE SEGURIDAD O CUANDO ESTÉ CARGADO. MANTENGASE ALEJADO DEL MECANISMO DE TIJERA EN MOVIMIENTO. NE PAS TRAVAILLER SOUS L'ÉLEVATEUR SANS BLOCS DE SÉCURITÉ OU LORSQU'IL EST CHARGÉ. RESTER À L'ÉCART DU MÉCANISME CISEAU LORSQUE L'ÉLEVATEUR EST EN FONCTIONNEMENT.	DO NOT STAND, SIT OR RIDE ON LIFT NO SE SIENTE, SE PARE, O VIAJE EN EL ELEVADOR NE PAS SE TENIR DEBOUT, S'ASSEoir OU MONTER SUR L'ÉLEVATEUR 207
---	--	--	---	---